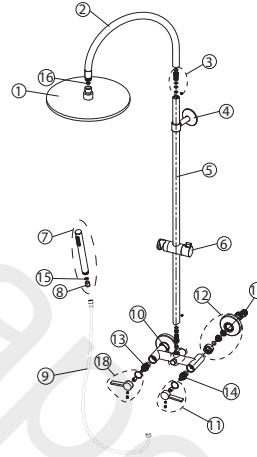


**100238755 chrome**

Shower column with mixer taps, L1249MM. Upper circular curve shower bar, D300MM shower head, round hand shower including check valve, sliding hand shower holder. With connections of 1/2 "and with a distance of 150±20mm between them. The flow rate at 3 bar is 6,3 l/min of the hand shower and 10,9 l/min of the shower head .

**Spare parts**

| POS. | SAP       | ART.                                   | RRP* |
|------|-----------|--|------|
| 1    | 100281030 | COL.DUCH.LIGNAGE ROCIADOR CROMO        | -    |
| 2    | 100281003 | COL.DUCH.LIGNAGE CURVA SUP CROMO       | -    |
| 3    | 100277983 | LIGN.SHO.COL -TUBES CONNECTOR          | -    |
| 4    | 100281013 | COL.DUCH.LIGNAGE SOPOR.PARED CROMO     | -    |
| 5    | 100281040 | COL.DUCH.LIGNAGE TUBO RECTO CROMO      | -    |
| 6    | 100280985 | COL.DUCH.LIGNAGE SOPOR.DUCHETA CROMO   | -    |
| 7    | 100280996 | COL.DUCH.LIGNAGE DUCHETA CROMO         | -    |
| 8    | 100281015 | LIGN.SHO.COL -HAND SHOW.CHECK VALV     | -    |
| 9    | 100281004 | COL.DUCH.LIGNAGE FLEX DUCHA CROMO      | -    |
| 10   | 100281020 | COL.DUCH.LIGNAGE EMB. INVERSOR CROMO   | -    |
| 11   | 100280983 | LIGNAGE SH.COL. -CHROME HANDLE C       | -    |
| 12   | 100281011 | COL.DUCH.LIGNAGE EMB.ENTR.AGUA CR      | -    |
| 13   | 100281053 | LIGN.SHO.COL -BRUSH GOLD COLD CARTRIDG | -    |
| 14   | 100281001 | LIGN.SHO.COL -BRUSH GOLD HOT CARTRIDG  | -    |
| 15   | 100268622 | 1/2 "GASKET WITH MESH FILTER           | -    |
| 16   | 100280968 | COL.DUCH.LIGNAGE KIT EXCENTRICAS       | -    |
| 17   | 100287139 | LIGNAGE SH.COL. -CHROME HANDLE H       | -    |