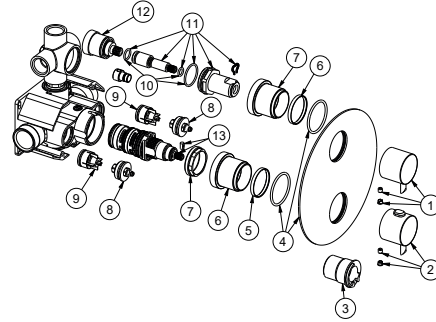
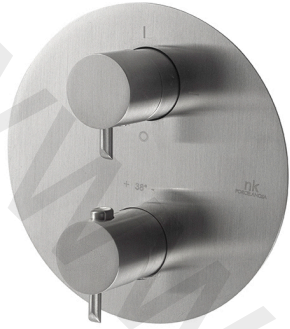


100288160 brushed stainless steel

Concealed thermostatic 3 ways 3/4"-1/2" including 1/2" adaptor for inlets with wax thermostatic element. Diverter valve with integrated shut off 1/2". Built in non-return valve. Safety stop at 38°C. Flow rate on each outlet are 25,8 l/min, 22,1 l/min, and 21,7 l/min. at 3 bar



Extension kit

OPTION	SAP	FINISH	DIMENSION
1	100298679	-	16 mm

Spare parts

POS.	SAP	ART.	RRP*
1	100288809	MAN INVER.TERM.ROUND INOX ACERO CEP	-
2	100288883	MAN CAUDAL TERM.ROUND INOX ACERO CEP	-
3	100288882	LIMITADOR TEMP. TERM. ROUND INOX	-
4	100288884	PLACA TERM. ROUND INOX 3 SAL ACERO CEP	-
5	100288816	ANILLO TERMOSTATICA ROUND INOX	-
6	100288892	CUBRECARTU TERM. ROUND INOX ACERO CEP	-
7	100117402	TUERCA GIRO IMAGINE TERMOSTATICA	-
8	100289139	TAPON PASO AGUA TERM. ROUND INOX	-
9	100117407	FILTRO GIRO IMAGINE TERMOST	-
10	100067588	JUNTAS CUERPO INTERNO INVERSOR GIRO	-
11	100289171	TUERCA INVERSOR TERM. ROUND INOX	-
12	100067587	CARTUCHO INVERSOR 3 VIAS GIRO	-
13	100291456	THERM. CARTRIDGE ROUND INOX	-