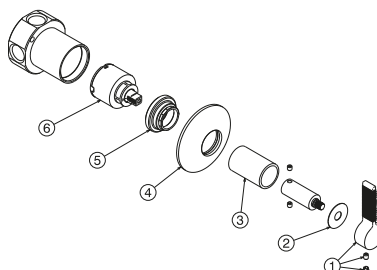
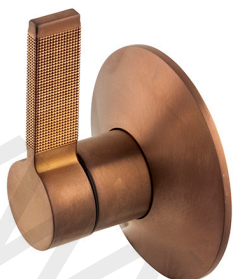


100289157 brushed copper

LUXE - Wall mounted concealed 3 ways diverter valve 1/2". Flow rate at 3 bar 27,09 l/min.



Extension kit

OPTION	SAP	FINISH	DIMENSION
1	100277992	-	25 mm

Spare parts

POS.	SAP	ART.	RRP*
1	100296561	MANETA LIGNAGE LUXE INVERSOR COBRE CEP	-
2	100258187	JUNTA MANETA PAV/LLAVE LIGNAGE	-
3	100296554	TUBO INVERSOR LIGNAGE COBRE CEP	-
4	100296527	EMB. PARED LIGNAGE INV. 3 SAL. COBRE CEP	-
5	100267051	DIVERTER NUT LIGNAGE 3 WAYS	-
6	100267031	DIVERTER CARTRIDGE LIGNAGE 3 WAYS	-