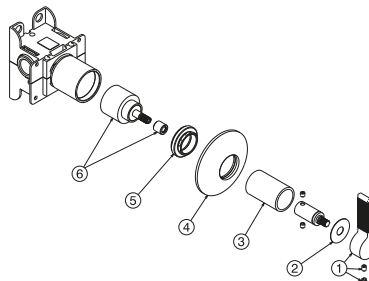
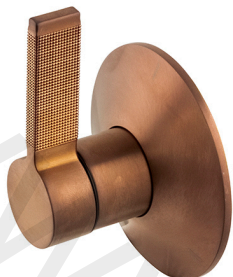


100289253 brushed copper

LUXE - 2 ways concealed diverter valve 1/2". Manual diverter. Flow rate 29,23 l/min. at 3 bar



Extension kit

OPTION	SAP	FINISH	DIMENSION
1	100277993	-	25 mm

Spare parts

POS.	SAP	ART.	RRP*
1	100296561	MANETA LIGNAGE LUXE INVERSOR COBRE CEP	-
2	100258187	JUNTA MANETA PAV/LLAVE LIGNAGE	-
3	100296554	TUBO INVERSOR LIGNAGE COBRE CEP	-
4	100296548	EMB. PARED LIGNAGE INV. 2 SAL. COBRE CEP	-
5	100267032	DIVERTER NUT LIGNAGE 2 WAYS	-
6	100267040	DIVERTER CARTRIDGE LIGNAGE 2 WAYS	-