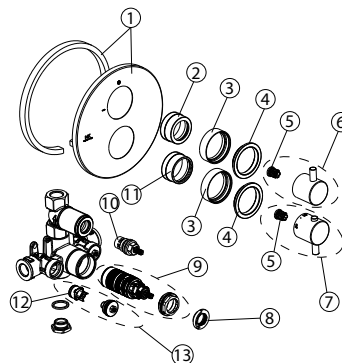


100293470 chrome

MARNE - Concealed thermostatic 2 ways 1/2" with wax thermostatic element. Diverter valve with integrated shut off 1/2". Flow rate bath 23,4 l/min. at 3 bar and flow rate shower 21,1 l/min. at 3 bar. Built in non-return valve. Safety stop at 38°C.



Extension kit

OPTION	SAP	FINISH	DIMENSION
1	100095147	CHROME	28 mm

Spare parts

POS.	SAP	ART.	RRP*
1	100060461	PLACA EMBELL. TERM.BASIC.ENC.2 SALIDAS	-
2	100097843	FIJACION DESVIADOR TERM.FUT.NK.LIB. CR	-
3	100097810	ANILLO REGULADOR LATON TERM.FUT.NK.LIB	-
4	100064813	EMBEL.MANETA TERM.ENC.NK LOGIC Y URBAN	-
5	100066742	INSERTO PLASTICO MEZCLAD.TERMO.CLIP13X20	-
6	100160210	HANDLE DIVERTER URBAN/BELA THERMO.CR	-
7	100301978	TEMPERATURE HANDLE MARNE WALLM.THERM CHR	-
8	100046424	ANILLO LIMIT.TEMP.TERM.BASIC	-
9	100212004	THERM. CARTRIDGE TONO	-
10	100060452	TUERCA PARA INVERSOR TERMOSTATICA 2/3 SA	-
11	100060475	CARTUCHO DESVIADOR TERMOST. BASIC	-
12	100097816	FIJACION MEZCLADOR TERM.FUT.NK.LIB. CR	-
13	100040396	VALVULA ANTI-RET TERMOS DAKOTA VN.02	-
14	100060455	FILTRO TERMOST. ENC. BASIC	-