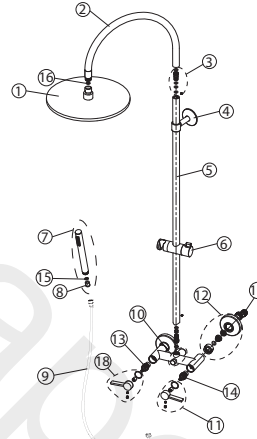


**100304084 brushed gold**

Shower column with mixer taps, L1249MM. Upper circular curve shower bar, D300MM shower head, round hand shower including check valve, sliding hand shower holder. With connections of 1/2 "and with a distance of 150±20mm between them. The flow rate at 3 bar is 6,3 l/min of the hand shower and 10,9 l/min of the shower head .

**Spare parts**

POS.	SAP	ART.	RRP*
1	100304843	LIGN.SHO.COL -BRUSH GOLD SHO.HEAD	-
2	100304847	LIGN.SHO.COL -BRUSH GOLD UPPER CURVE	-
3	100277983	LIGN.SHO.COL -TUBES CONNECTOR	-
4	100304854	LIGN.SHO.COL -BRUSH GOLD WALL BRACKET	-
5	100304840	LIGN.SHO.COL -BRUSH GOLD STRAIGHT TUBE	-
6	100304829	LIGN.SHO.COL -BRUSH GOLD SLIDER HOLDER	-
7	100304850	LIGN.SHO.COL -BRUSH GOLD HAND SHOWER	-
8	100281015	LIGN.SHO.COL -HAND SHOW.CHECK VALV	-
9	100304855	LIGN.SHO.COL -BRUSH GOLD FLEXIB.HOSE	-
10	100304853	LIGN.SHO.COL -BRUSH GOLD DIVERTER	-
11	100304848	LIGN.SHO.COL -BRUSH GOLD WATER.IN+TRIM	-
12	100304841	LIGN.SHO.COL -BRUSH GOLD COLD HANDLE	-
13	100281053	LIGN.SHO.COL -BRUSH GOLD COLD CARTRIDG	-
14	100281001	LIGN.SHO.COL -BRUSH GOLD HOT CARTRIDG	-
15	100268622	1/2 "GASKET WITH MESH FILTER	-
16	100304861	LIGN.SHO.COL -BRUSH GOLD ECCENTRIC KIT	-
17	100304851	LIGN.SHO.COL -BRUSH GOLD HOT HAND	-