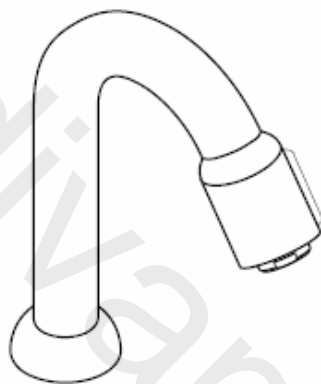
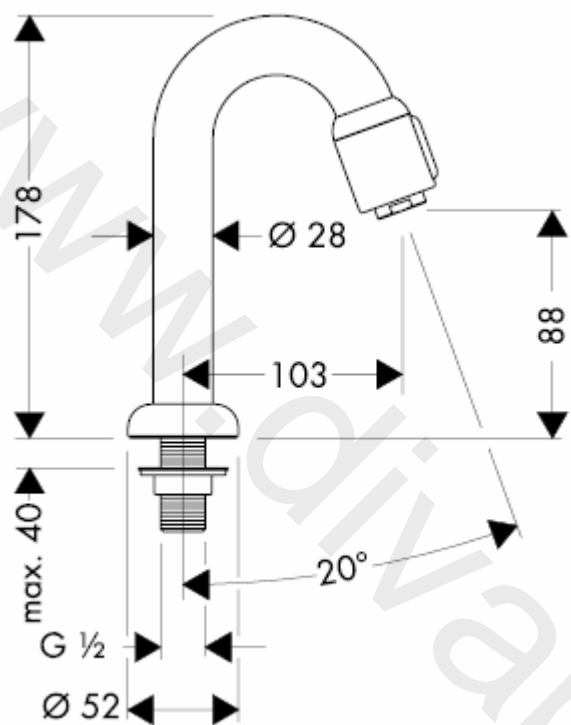


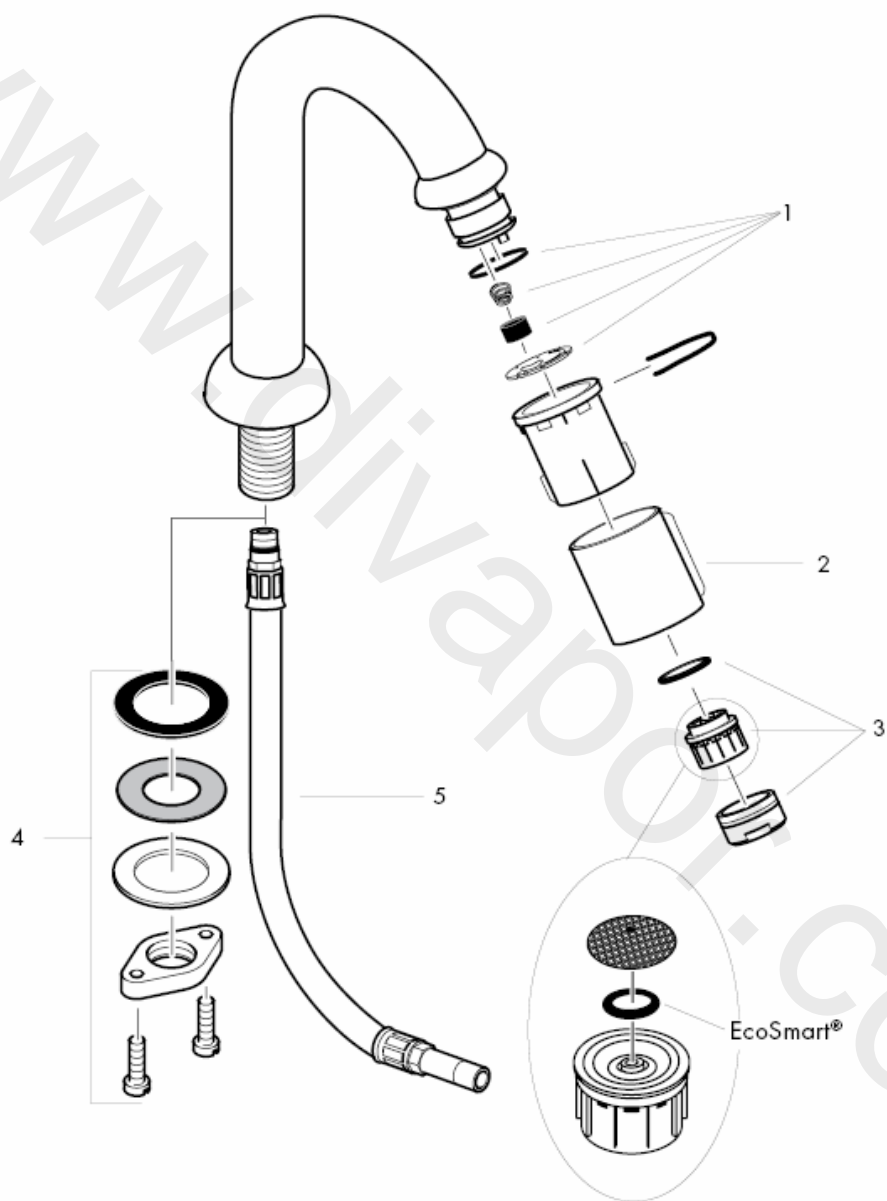
Montageanleitung



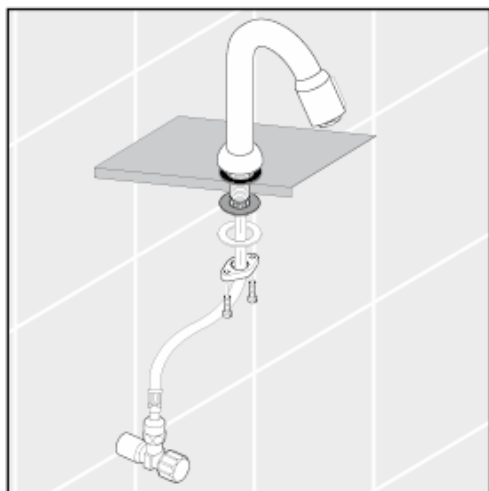
13130XXX

hansgrohe

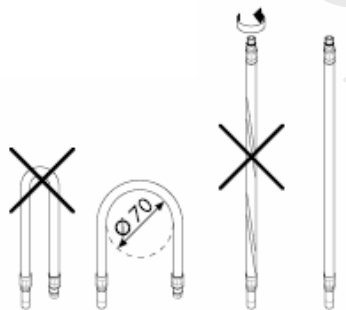




Zulaufleitungen fachgerecht durchspülen.



Montage Anschlusschlauch



Technische Daten

Armatur serienmäßig mit EcoSmart®

(Durchflussbegrenzer)

Durchflussleistung mit EcoSmart:

5 l/min 0,3 MPa

Durchflussleistung ohne EcoSmart:

11 l/min 0,3 MPa

Betriebsdruck: max. 1 MPa

Empfohlener Betriebsdruck: 0,1 – 0,5 MPa

Prüfdruck: 1,6 MPa

(1 MPa = 10 bar = 147 PSI)

Heißwassertemperatur: max. 80° C

Empfohlene Heißwassertemperatur: 65° C

Serviceteile siehe Seite 3

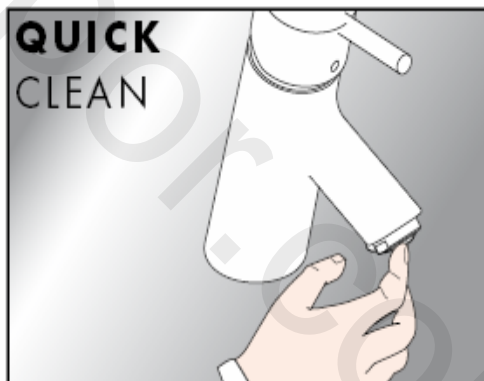
1	Service Set	94156000
2	Mantel für Zapfventil	94061XXX
3	Luftsprudler kpl.	13185000
4	Schaftbefestigung kpl.	94702000
5	Anschlusschlauch	94071000

XXX = Farbcodierung

000 chrom

800 edelstahl-optik

Mit QuickClean, der manuellen Reinigungsfunktion können die Strahlformer durch einfaches rubbeln vom Kalk befreit werden.

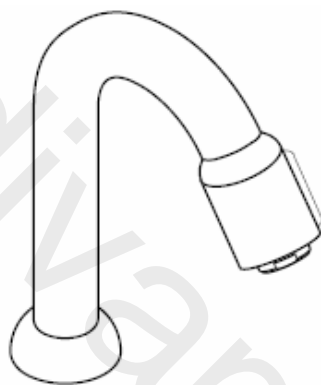


hansgrohe

Hansgrohe · Postfach 1145 · D-77761 Schiltach · Telefon +49 (0) 78 36/51-1282 · Telefax +49 (0) 7836/511440
E-Mail: info@hansgrohe.com · Internet: www.hansgrohe.com

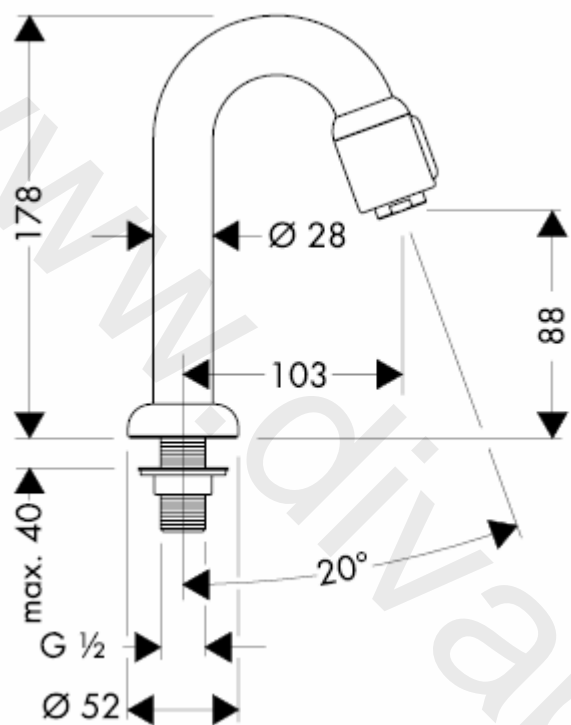
11/2009
9.0771.03
Deutsch

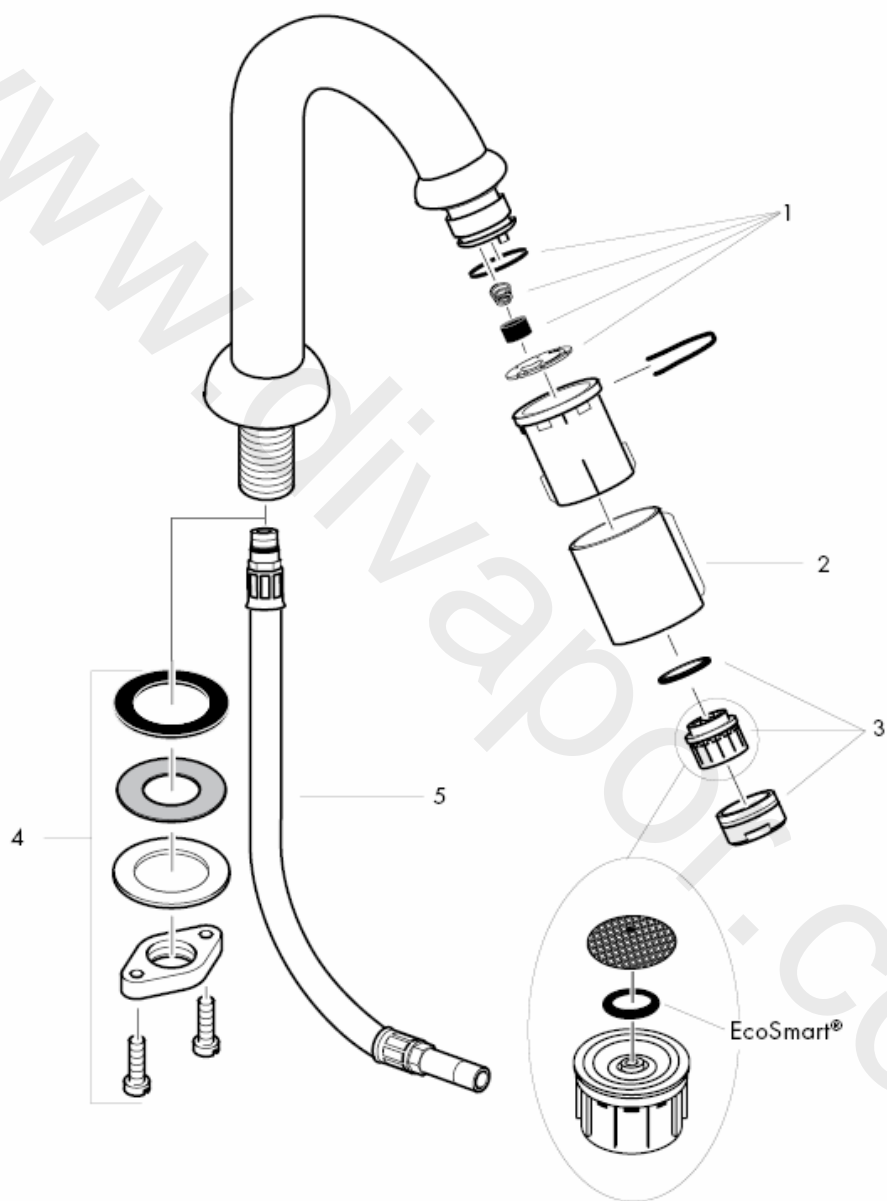
Instructions de montage



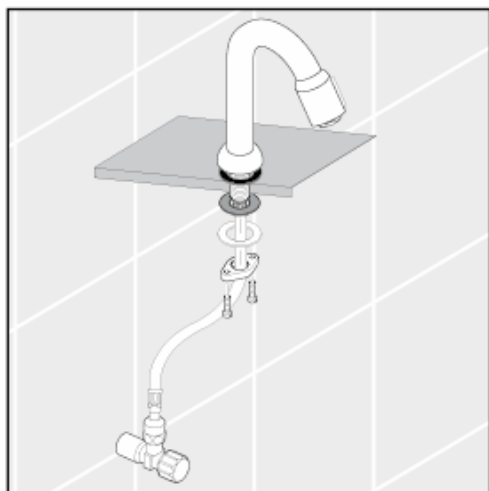
13130XXX

hansgrohe

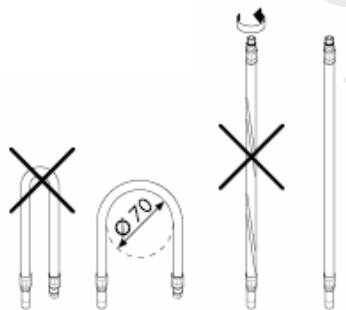




Purger les conduites d'alimentation.



Montage flexible de
raccordement



Informations techniques

Robinetterie équipée en série d'un EcoSmart®
(limiteur de débit)

Débit avec EcoSmart:

5 l/min 0,3 MPa

Débit sans EcoSmart:

11 l/min 0,3 MPa

Pression de service autorisée: max. 1 MPa

Pression de service conseillée: 0,1 – 0,5 MPa

Pression maximum de contrôle: 1,6 MPa

(1 MPa = 10 bar = 147 PSI)

Température d'eau chaude: max. 80° C

Température recommandée: 65° C

Pièces détachées voir pages 3

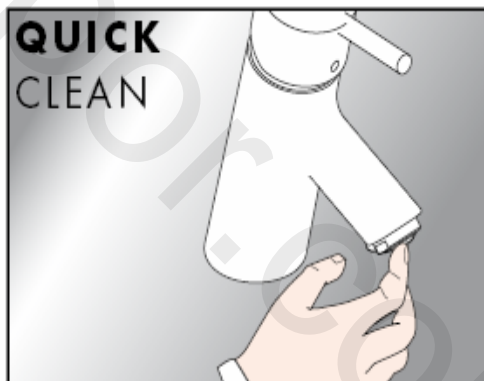
1	set de service	94156000
2	douille pour robinet lave mains	94061XXX
3	aérateur cpl.	13185000
4	fixation cpl.	94702000
5	flexible de raccords	94071000

XXX = Couleurs

000 chromé

800 aspect acier inox

QuickClean, la fonction de nettoyage manuelle, permet d'enlever facilement le tartre des mousseurs par simple frottement.

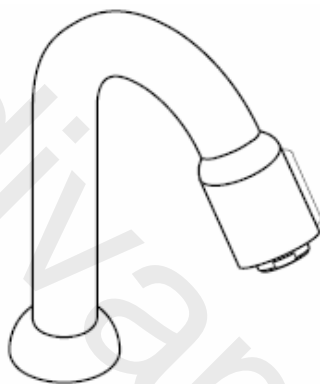


hansgrohe

Hansgrohe · Postfach 1145 · D-77761 Schiltach · Telefon +49 (0) 78 36/51-1282 · Telefax +49 (0) 7836/511440
E-Mail: info@hansgrohe.com · Internet: www.hansgrohe.com

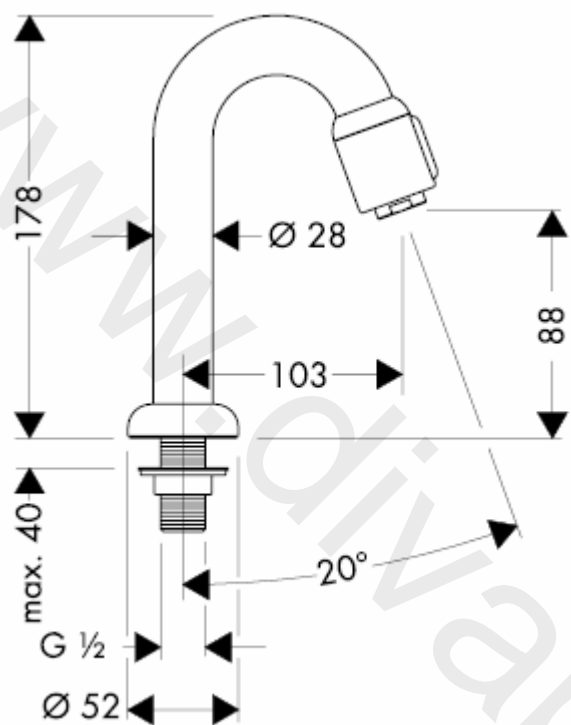
11/2009
9.0771.03
Français

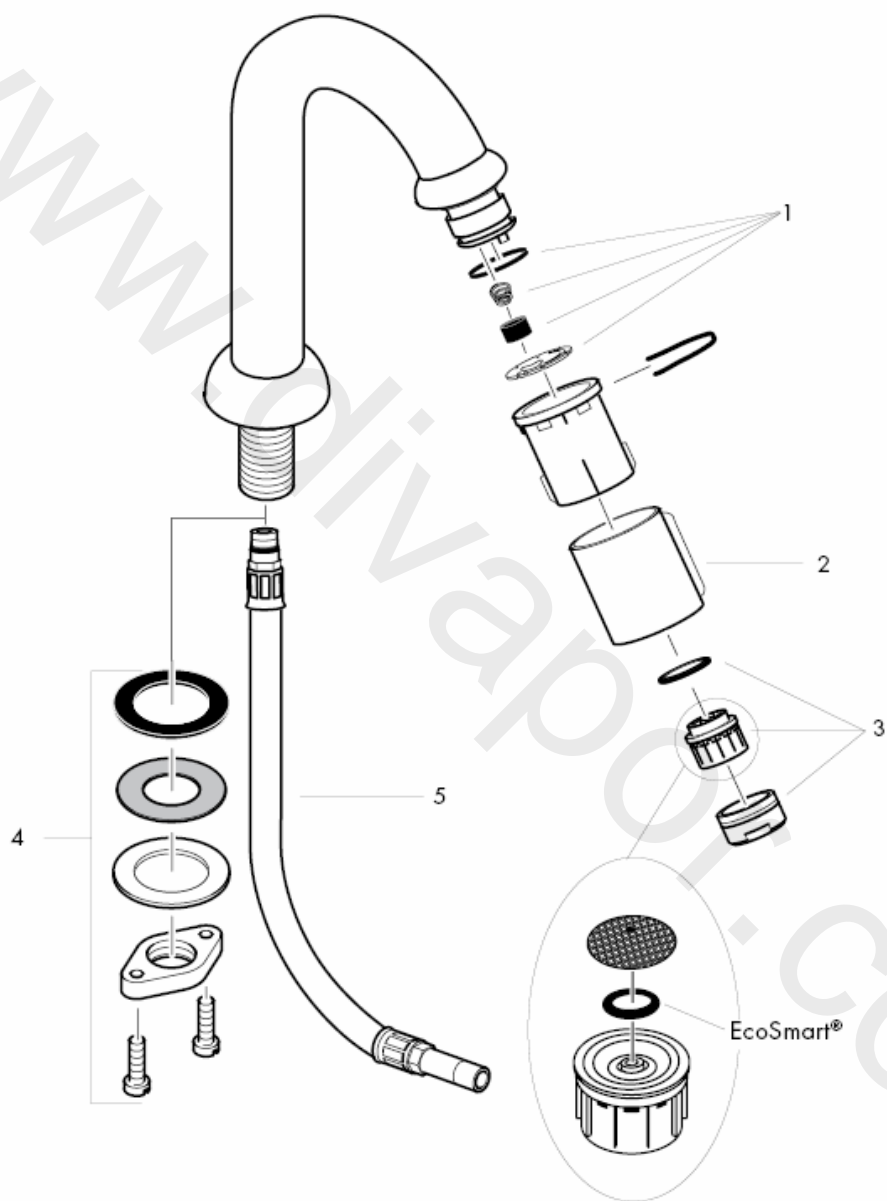
assembly instructions



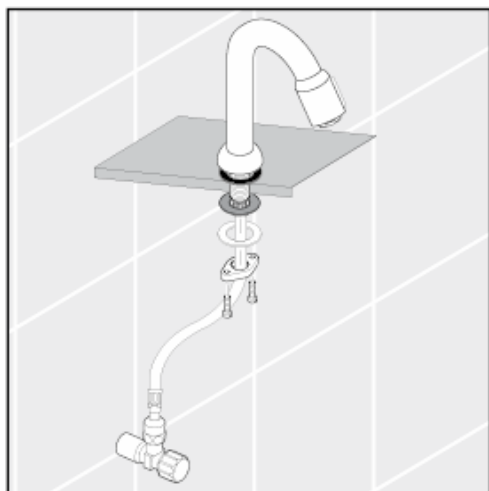
13130XXX

hansgrohe

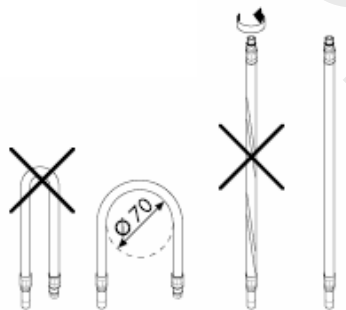




Flush through the supply pipes.



Assembly connecting hoses



Technical Data

This mixer series-produced with EcoSmart®
(flow limiter)

Rate of flow with EcoSmart:

5 l/min 0,3 MPa

Rate of flow without EcoSmart:

11 l/min 0,3 MPa

Operating pressure: max. 1 MPa

Recommended operating pressure: 0,1 – 0,5 MPa

Test pressure: 1,6 MPa

(1 MPa = 10 bar = 147 PSI)

Hot water temperature: max. 80° C

Recommended hot water temp.: 65° C

Spare parts see page 3

1	service set	94156000
2	cover for shut off valve	94061XXX
3	aerator cpl.	13185000
4	fixing set	94702000
5	connection hose	94071000

XXX = Colors

000 chrome plated

800 stainless steel optic

The QuickClean cleaning function only needs a small manual rub over to remove the lime scale from the spray channels.

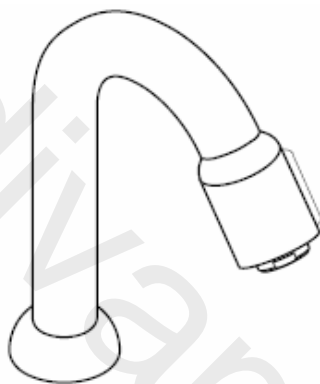


hansgrohe

Hansgrohe · Postfach 1145 · D-77761 Schiltach · Telefon +49 (0) 78 36/51-1282 · Telefax +49 (0) 7836/511440
E-Mail: info@hansgrohe.com · Internet: www.hansgrohe.com

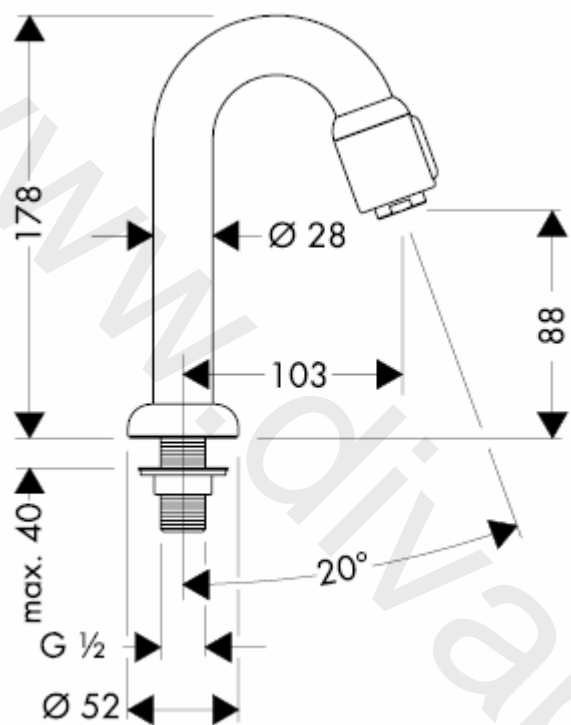
11/2009
9.0771.03
English

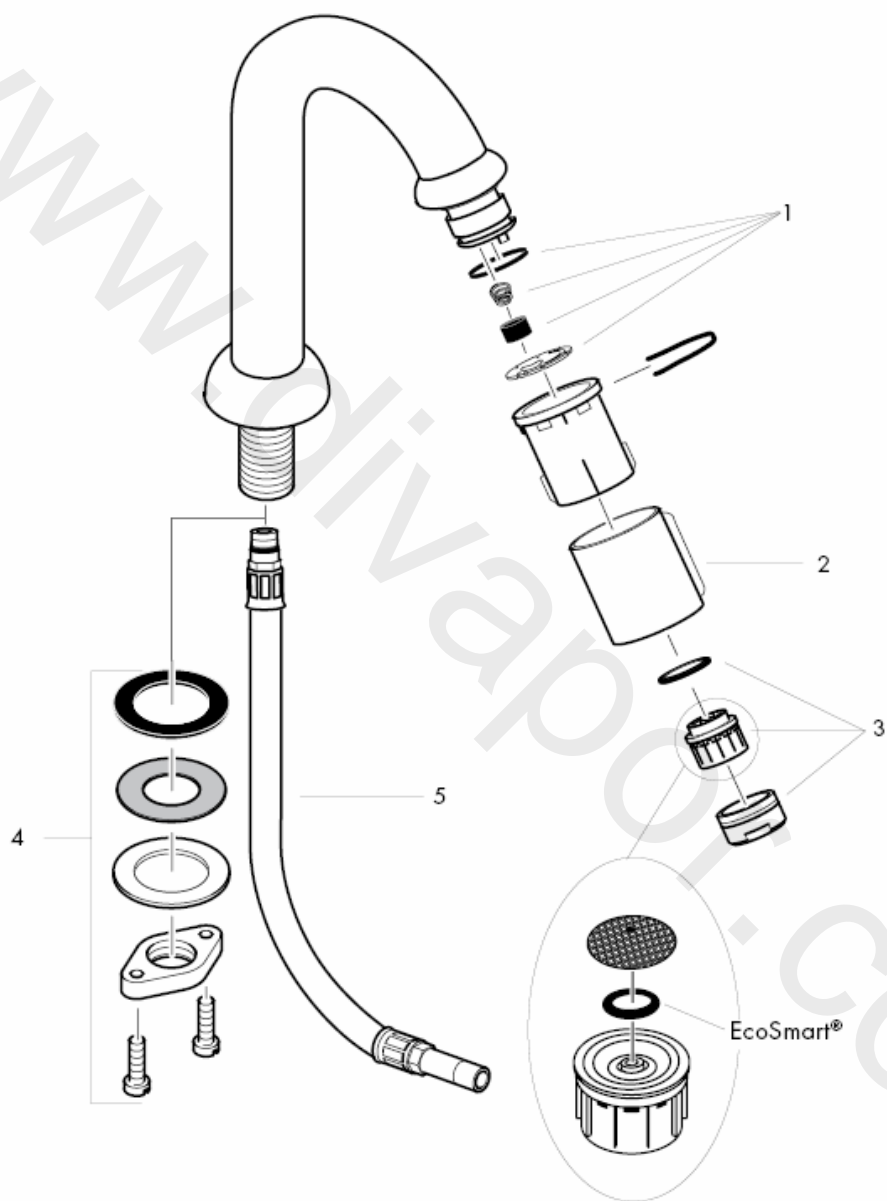
Istruzioni per Installazione



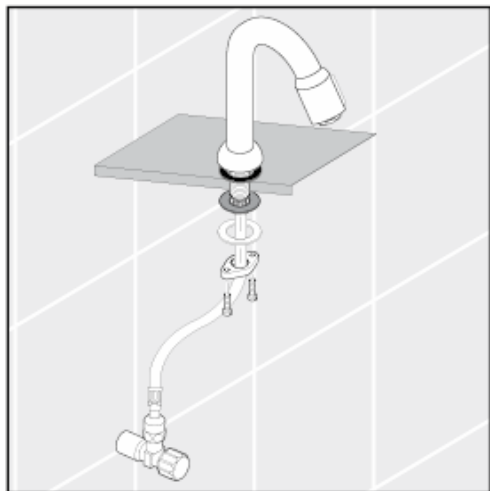
13130XXX

hansgrohe

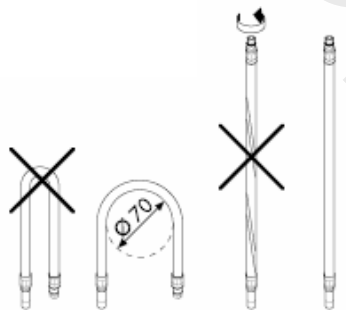




Collegare le uscite principali.



Montaggio flessibile



Dati tecnici

Questo miscelatore è dotato di serie del
EcoSmart® (limitatore di flusso)

Potenza di erogaz. con EcoSmart: 5 l/min 0,3 MPa

Potenza di erogaz. senza EcoSmart: 11 l/min 0,3 MPa

Pressione d'uso: max. 1 MPa

Pressione d'uso consigliata: 0,1 – 0,5 MPa

Pressione di prova: 1,6 MPa

(1 MPa = 10 bar = 147 PSI)

Temperatura dell'acqua calda: max. 80° C

Temp. dell'acqua calda consigliata: 65° C

Parti di ricambio vedi pagg. 3

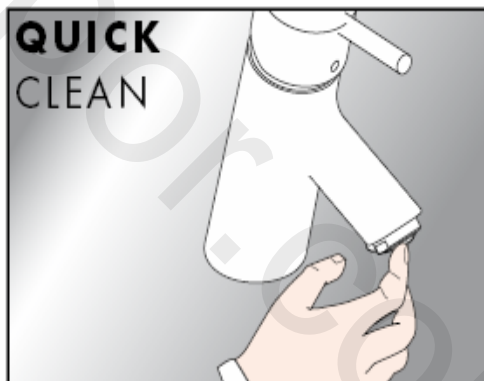
1	set di servizio	94156000
2	copertura per rubinetto d'arresto al bordo	94061XXX
3	rompigetto compl.	13185000
4	set di fissaggio compl.	94702000
5	raccordo flessibile	94071000

XXX = Trattamento

000 cromato

800 acciaio inox acciaio

Con QuickClean, la funzione anticalcare manuale, i diffusori del getto possono essere liberati da calcare con un semplice strofinamento.

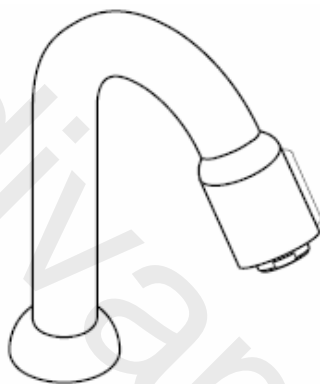


hansgrohe

Hansgrohe · Postfach 1145 · D-77761 Schiltach · Telefon +49 (0) 78 36/51-1282 · Telefax +49 (0) 7836/511440
E-Mail: info@hansgrohe.com · Internet: www.hansgrohe.com

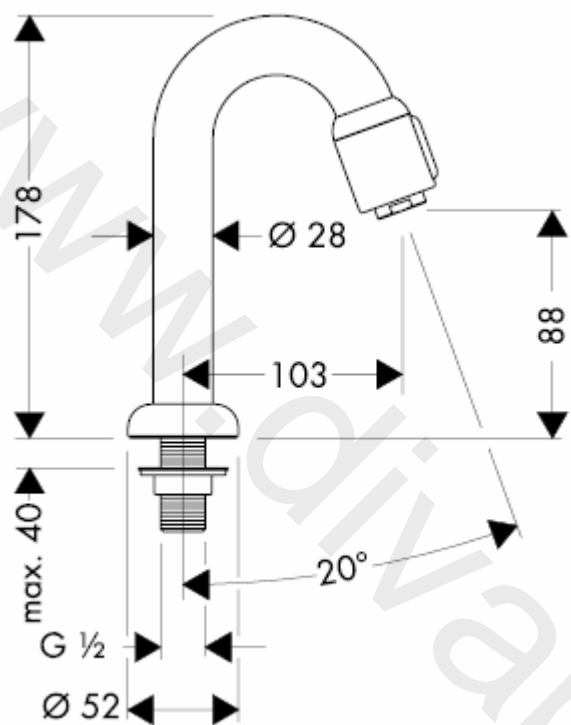
11/2009
9.0771.03
italiano

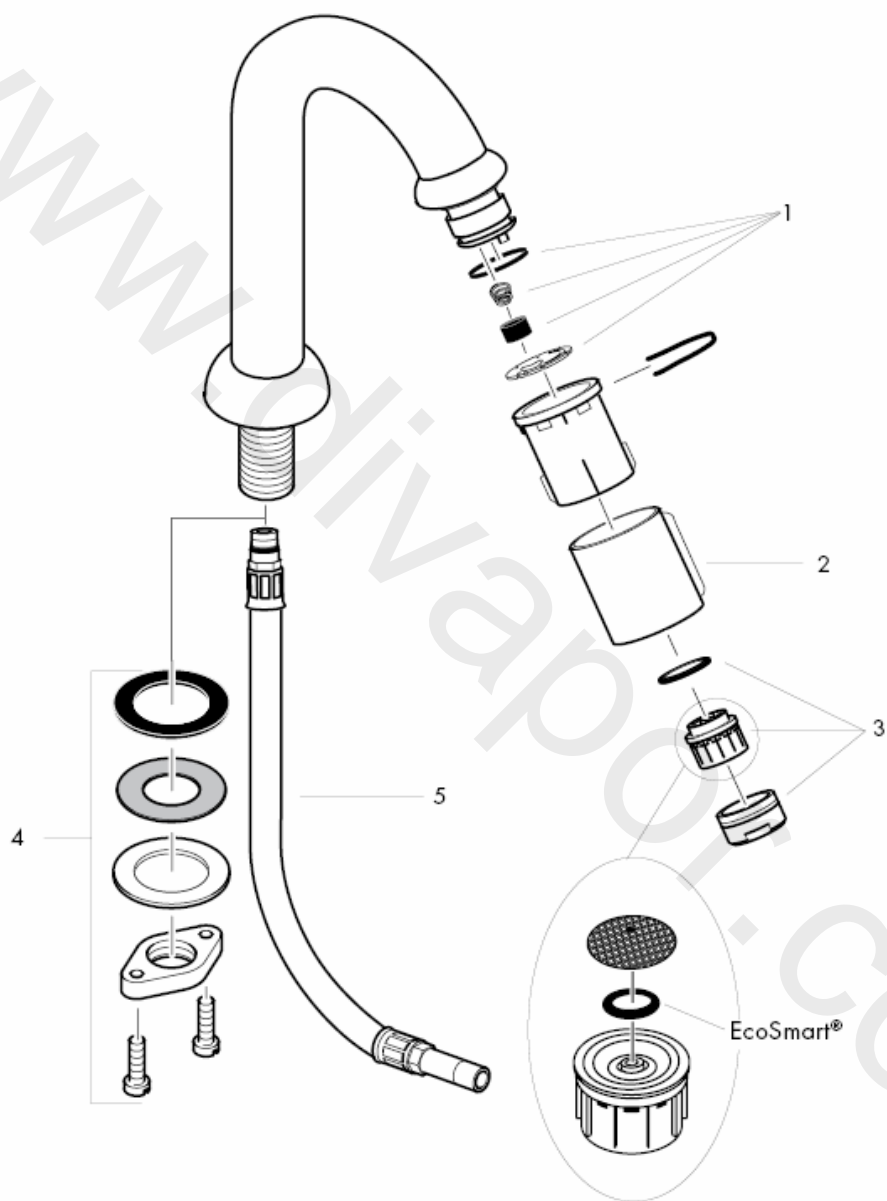
Instrucciones de montaje



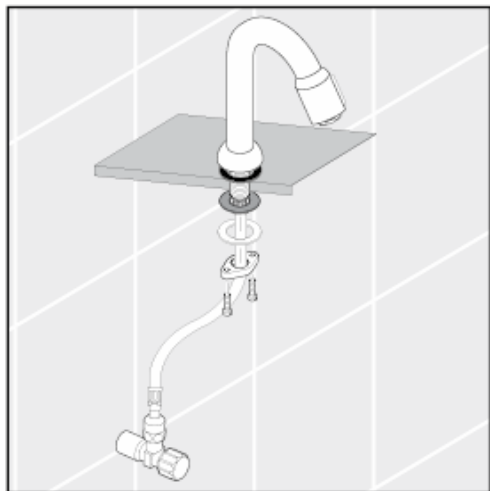
13130XXX

hansgrohe

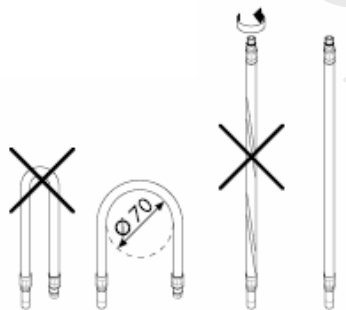




Purgar las tuberías de afluencia.



Montaje conexión flexible



Datos técnicos

Grifo, desde fábrica equipado con EcoSmart®
(limitador de caudal)

Caudal máximo con EcoSmart: 5 l/min 0,3 MPa

Caudal máximo sin EcoSmart: 11 l/min 0,3 MPa

Presión en servicio: max. 1 MPa

Presión recomendada en servicio: 0,1 – 0,5 MPa

Presión de prueba: 1,6 MPa

(1 MPa = 10 bar = 147 PSI)

Temperatura del agua caliente: max. 80° C

Temp. recomendada del agua caliente: 65° C

Repuestos ver página 3

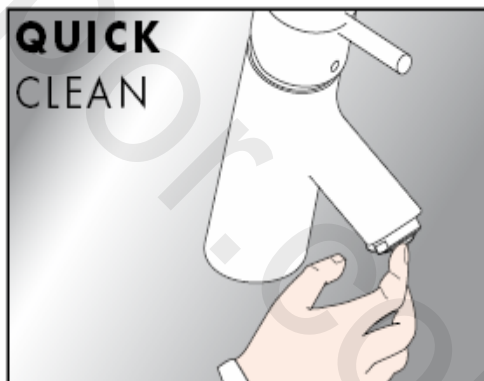
1	Set de reparación	94156000
2	Set de reparación Casquillo	94061XXX
3	Aireador completo	13185000
4	Set de fijación completo	94702000
5	Conexión flexible	94071000

XXX = Acabados

000 cromado

800 acero especial

QuickClean, la función de limpieza manual, permite quitar la cal simplemente frotando los ejectores.

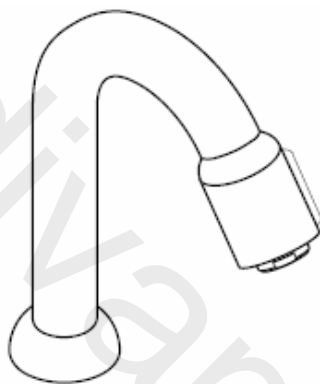


hansgrohe

Hansgrohe · Postfach 1145 · D-77761 Schiltach · Telefon +49 (0) 78 36/51-1282 · Telefax +49 (0) 7836/511440
E-Mail: info@hansgrohe.com · Internet: www.hansgrohe.com

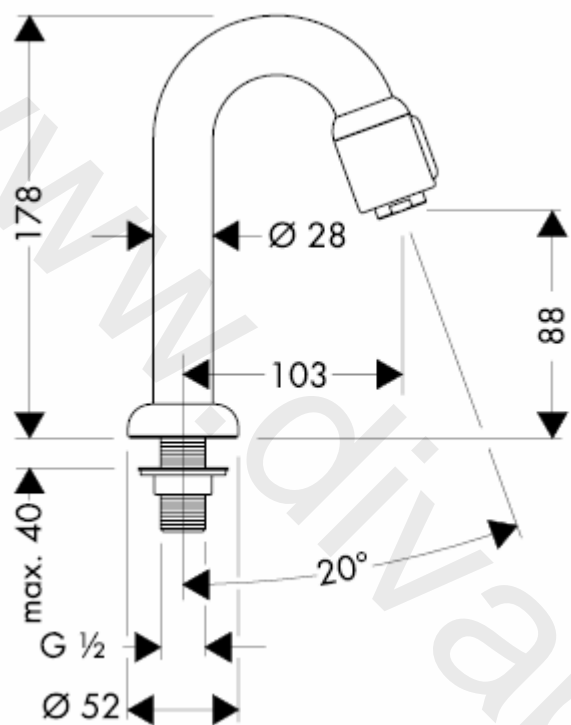
11/2009
9.0771.03
Español

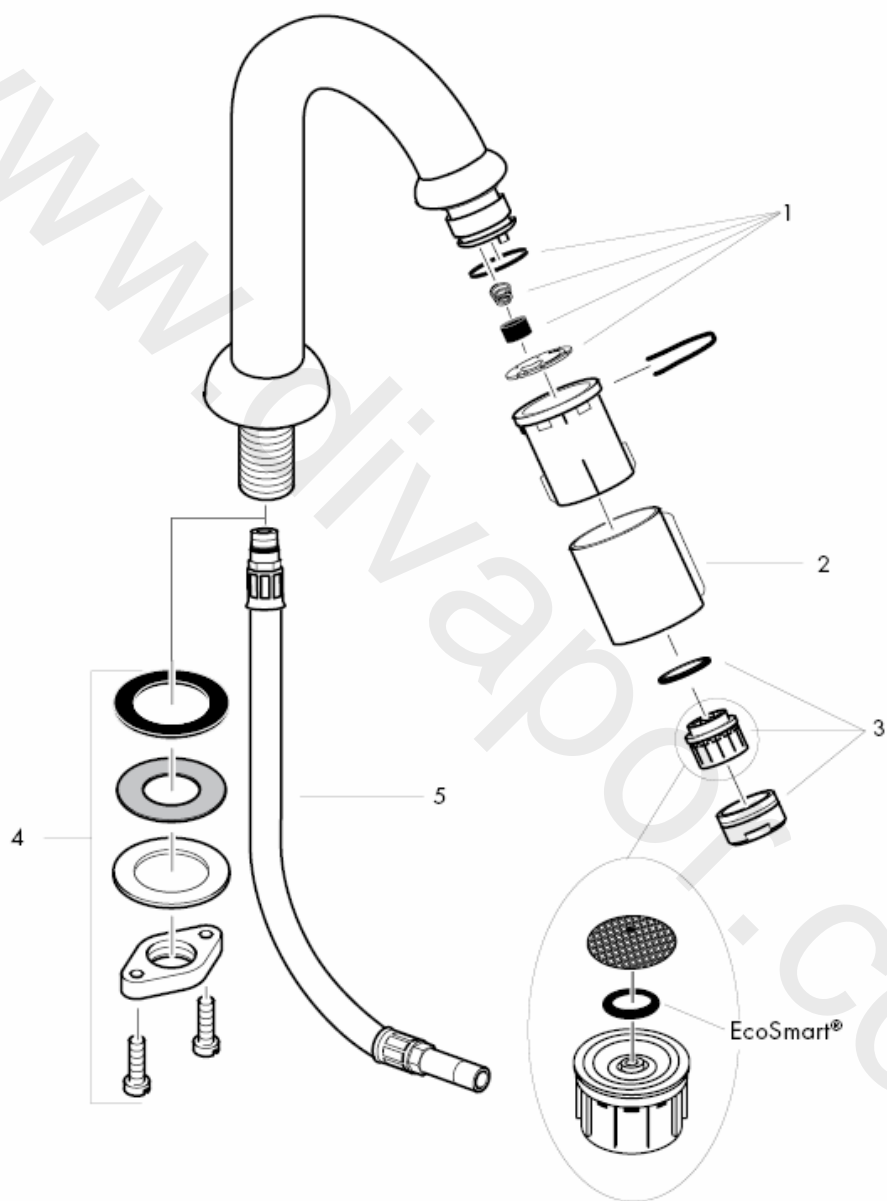
Handleiding



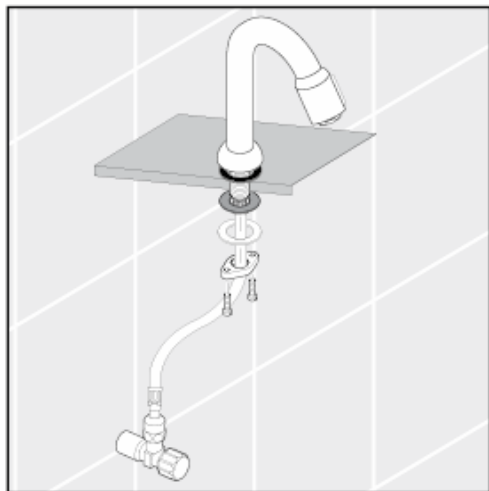
13130XXX

hansgrohe

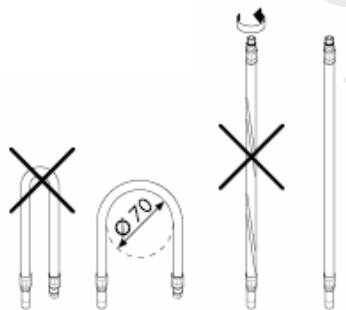




Toevoerleidingen vakkundig doorspoelen.



Montage aansluitslangen



Technische gegevens

Armatuur standaard met EcoSmart®

(doorstroombegrenzer)

Doorstroomcapaciteit met EcoSmart:

5 l/min 0,3 MPa

Doorstroomcap. zonder EcoSmart:

11 l/min 0,3 MPa

Werkdruk: max.

max. 1 MPa

Aanbevolen werkdruk:

0,1 – 0,5 MPa

Getest bij:

1,6 MPa

(1 MPa = 10 bar = 147 PSI)

Temperatuur warm water:

max. 80° C

Aanbevolen warm water temp.:

65° C

Service onderdelen zie blz. 3

1	serviceset	94156000
2	Mantel voor toiletkraan	94061XXX
3	perlator kompl.	13185000
4	schachtbevestigingsset kompl.	94702000
5	aansluitslang	94071000

XXX = Kleuren

000 verchromd

800 RVS-look

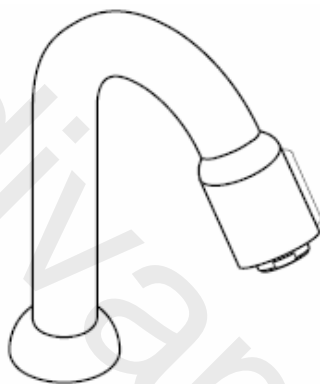
Met QuickClean, de handmatige reinigingsfunctie, kunnen de straalopeningen door het met de hand wegwrijven van kalk, gereinigd worden.



hansgrohe

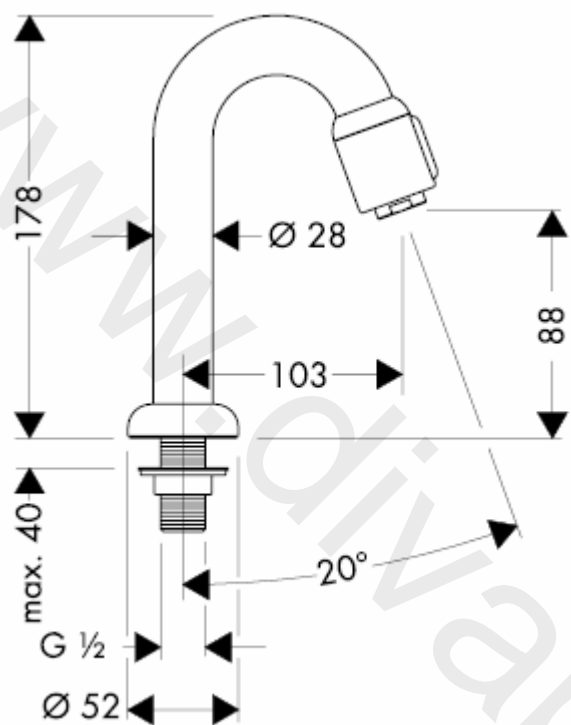
Hansgrohe · Postfach 1145 · D-77761 Schiltach · Telefon +49 (0) 78 36/51-1282 · Telefax +49 (0) 7836/511440
E-Mail: info@hansgrohe.com · Internet: www.hansgrohe.com

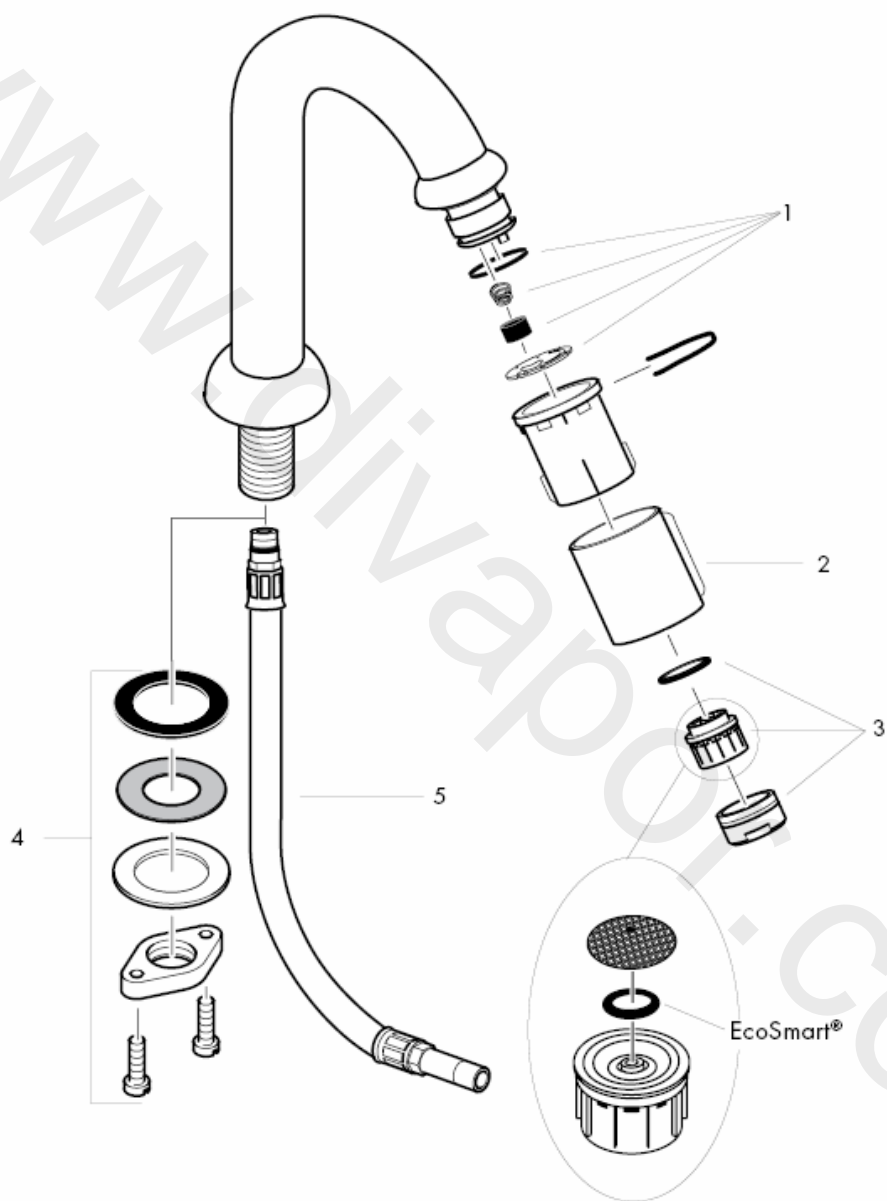
Monteringsvejledning



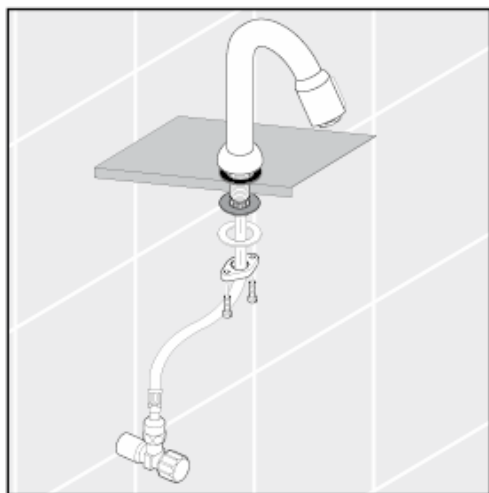
13130XXX

hansgrohe

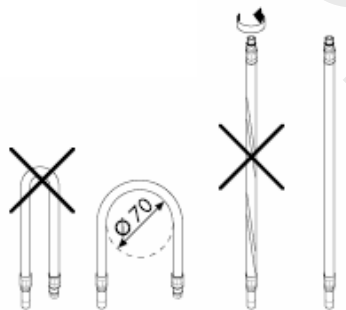




Skyl tilførselsledningene grundig.



Montering tilslutningslangerne



Tekniske data

Armaturet er forsynet med EcoSmart®
(gennemstrømningsbegrænser)

Gennemstrømningskap. med EcoSmart:
5 l/min 0,3 MPa

Gennemstrømningskap. uden EcoSmart:
11 l/min 0,3 MPa

Driftstryk: max. 1 MPa

Anbefalet driftstryk: 0,1 – 0,5 MPa

Prøvetryk: 1,6 MPa

(1 MPa = 10 bar = 147 PSI)

Varmtvandstemperatur: max. 80° C

Anbefalet varmtvandstemperatur: 65° C

Reservedele se s. 3

1	Service-sæt	94156000
2	Dæksel til udløb	94061XXX
3	Perlator kpl.	13185000
4	Festedel kpl.	94702000
5	Tilslutningsslange	94071000

XXX = Overflade

000 Krom

800 Stainless steel optic

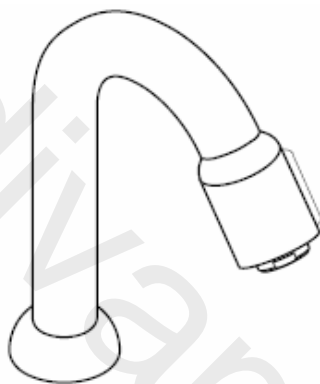
Med QuickClean, den manuelle rengøringsfunktion kan strålekanalerne let renses for kalk - der skal blot gnubbes!



hansgrohe

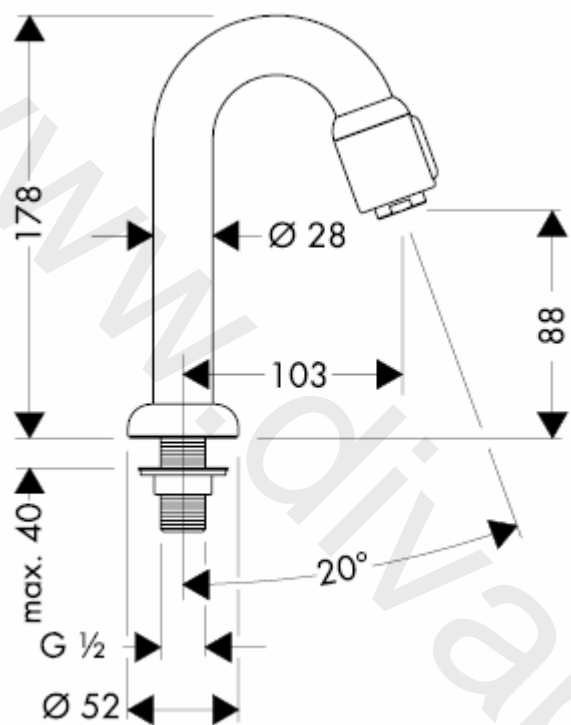
Hansgrohe · Postfach 1145 · D-77761 Schiltach · Telefon +49 (0) 78 36/51-1282 · Telefax +49 (0) 7836/511440
E-Mail: info@hansgrohe.com · Internet: www.hansgrohe.com

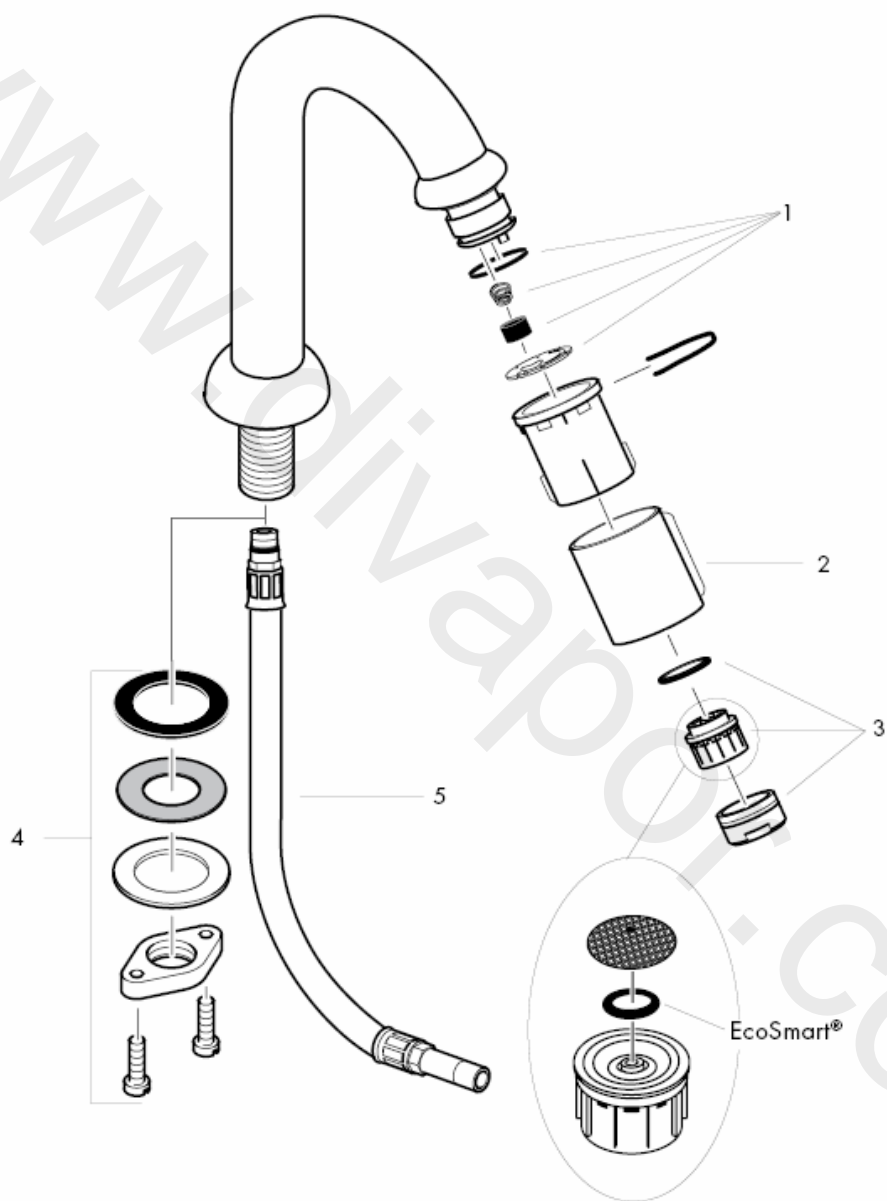
Manual de Instalación



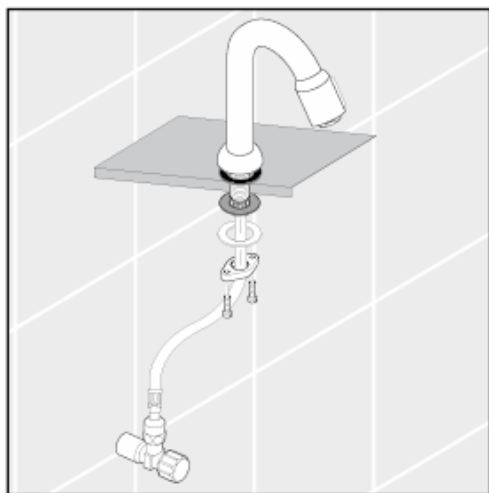
13130XXX

hansgrohe

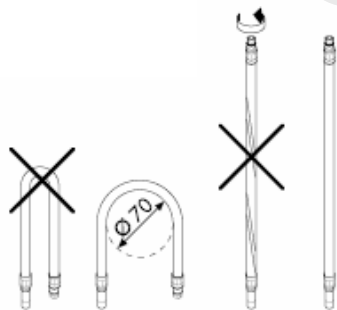




Purgue a canalização.



Montagem tubo flexível



Dados Técnicos

Misturadoras produzidas em série com
EcoSmart® (limitador de caudal)

Caudal com EcoSmart:

5 l/min 0,3 MPa

Caudal sem EcoSmart:

11 l/min 0,3 MPa

Pressão de funcionamento: max. 1 MPa

Pressão de func. recomendada: 0,1 – 0,5 MPa

Pressão testada: 1,6 MPa

(1 MPa = 10 bar = 147 PSI)

Temperatura da água quente: max. 80° C

Temp. água quente recomendada: 65° C

Peças de substituição ver página 3

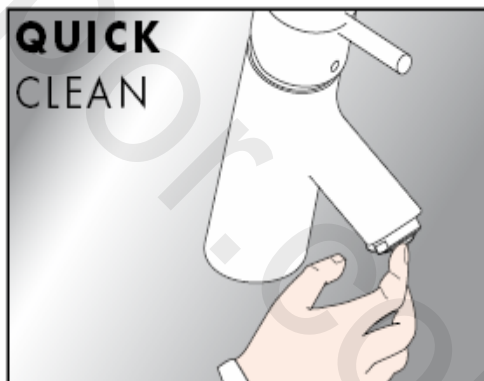
1	Conjunto de manutenção	94156000
2	Cobertura para válvula de corte	94061XXX
3	Emulsor compl.	13185000
4	Porca de fixação compl.	94702000
5	Tubo flexível	94071000

XXX = Acabamentos

000 cromado

800 aço imaculado ótica

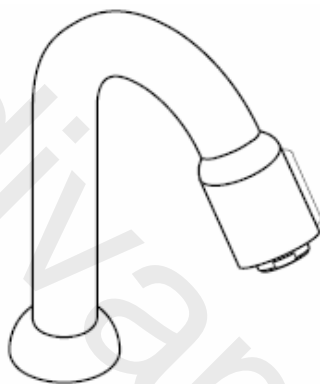
O sistema de limpeza QuickClean requer apenas uma ligeira passagem com a mão para remover os depósitos de calcário do emulsor.



hansgrohe

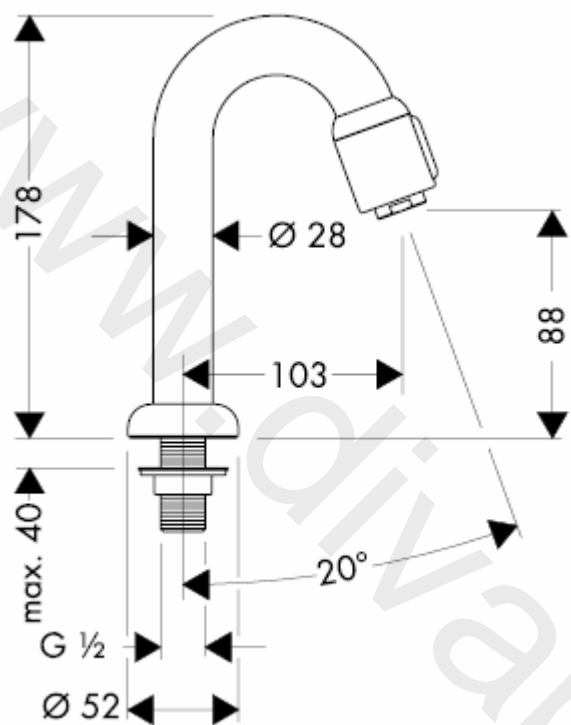
Hansgrohe · Postfach 1145 · D-77761 Schiltach · Telefon +49 (0) 78 36/51-1282 · Telefax +49 (0) 7836/511440
E-Mail: info@hansgrohe.com · Internet: www.hansgrohe.com

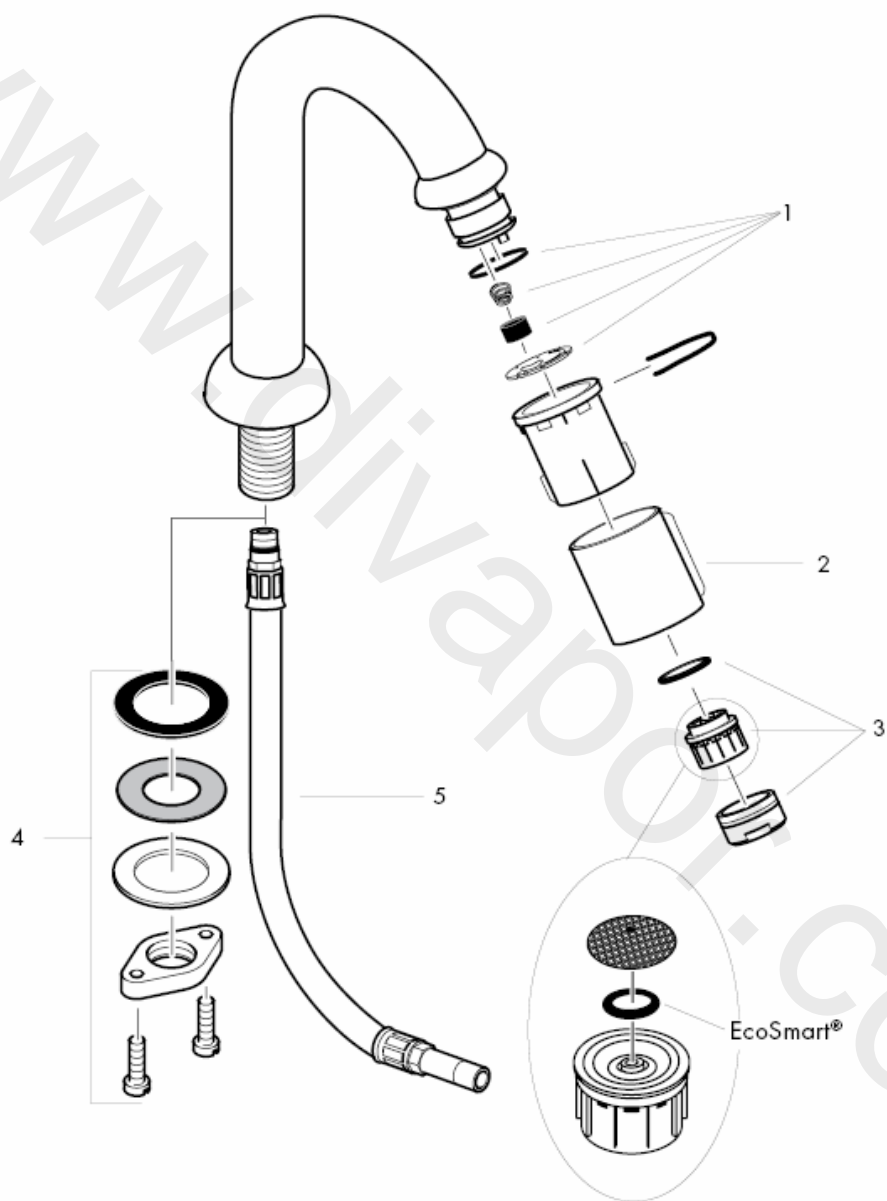
Instrukcja montażu



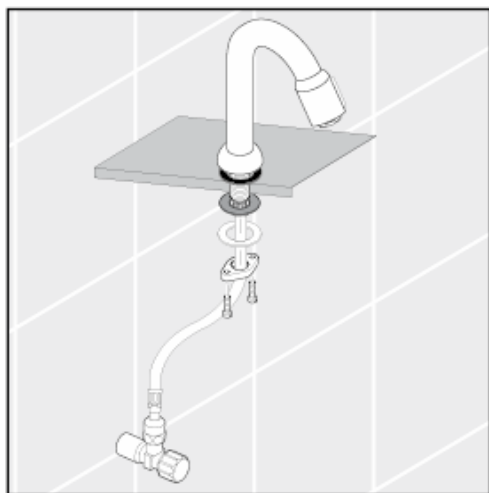
13130XXX

hansgrohe

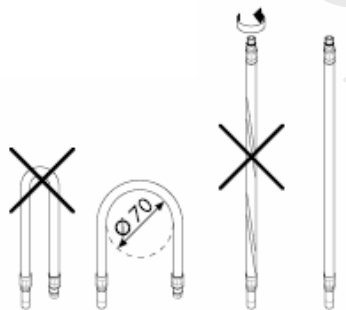




Przepłukać instalację



Montaż węży
przyłączeniowego



Dane techniczne

Armatura produkowana seryjnie z funkcją EcoSmart® (ogranicznik przepływu)

Wydajność przepływu z ogranicznikiem przepływu EcoSmart:

5 l/min 0,3 MPa

Wydajność przepływu bez ogranicznika przepływu EcoSmart:

11 l/min 0,3 MPa

Ciśnienie robocze: max. 1 MPa

Zalecane ciśnienie robocze: 0,1 – 0,5 MPa

Ciśnienie próbne: 1,6 MPa

(1 MPa = 10 bary = 147 PSI)

Temperatura wody gorącej: max. 80° C

Zalecana temperatura wody gorącej: 65° C

Części serwisowe patrz strona 3

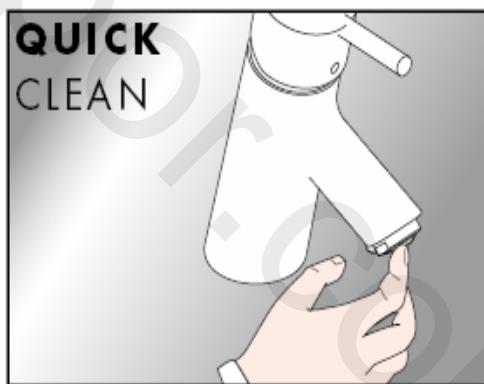
1	Zestaw serwisowy	94156000
2	Obudowa do zaworu czerpalnego	94061XXX
3	Napowietrzacz kpl.	13185000
4	Mocowanie kpl.	94702000
5	Wąż przyłączeniowy	94071000

XXX = kody wykończenia powierzchni

000 chrom

800 stal szlachetna

Funkcja QuickClean wymaga jedynie delikatnego potarcia dłonią, aby usunąć ewentualne osady kamienia wapiennego.

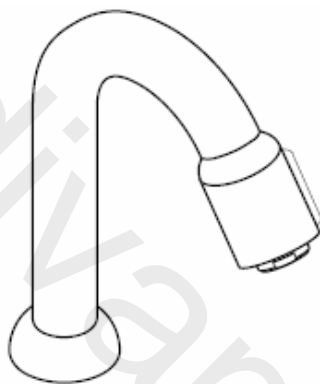


hansgrohe

Hansgrohe · Postfach 1145 · D-77761 Schiltach · Telefon +49 (0) 78 36/51-1282 · Telefax +49 (0) 7836/511440
E-Mail: info@hansgrohe.com · Internet: www.hansgrohe.com

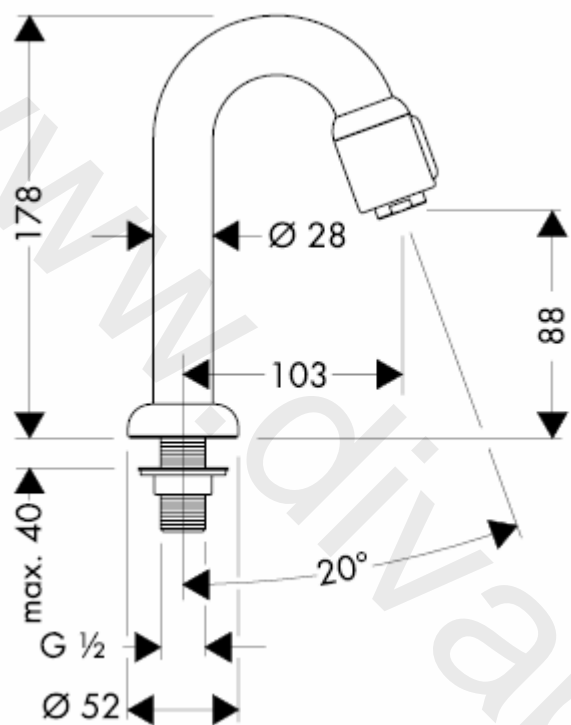
11/2009
9.0771.03
Polski

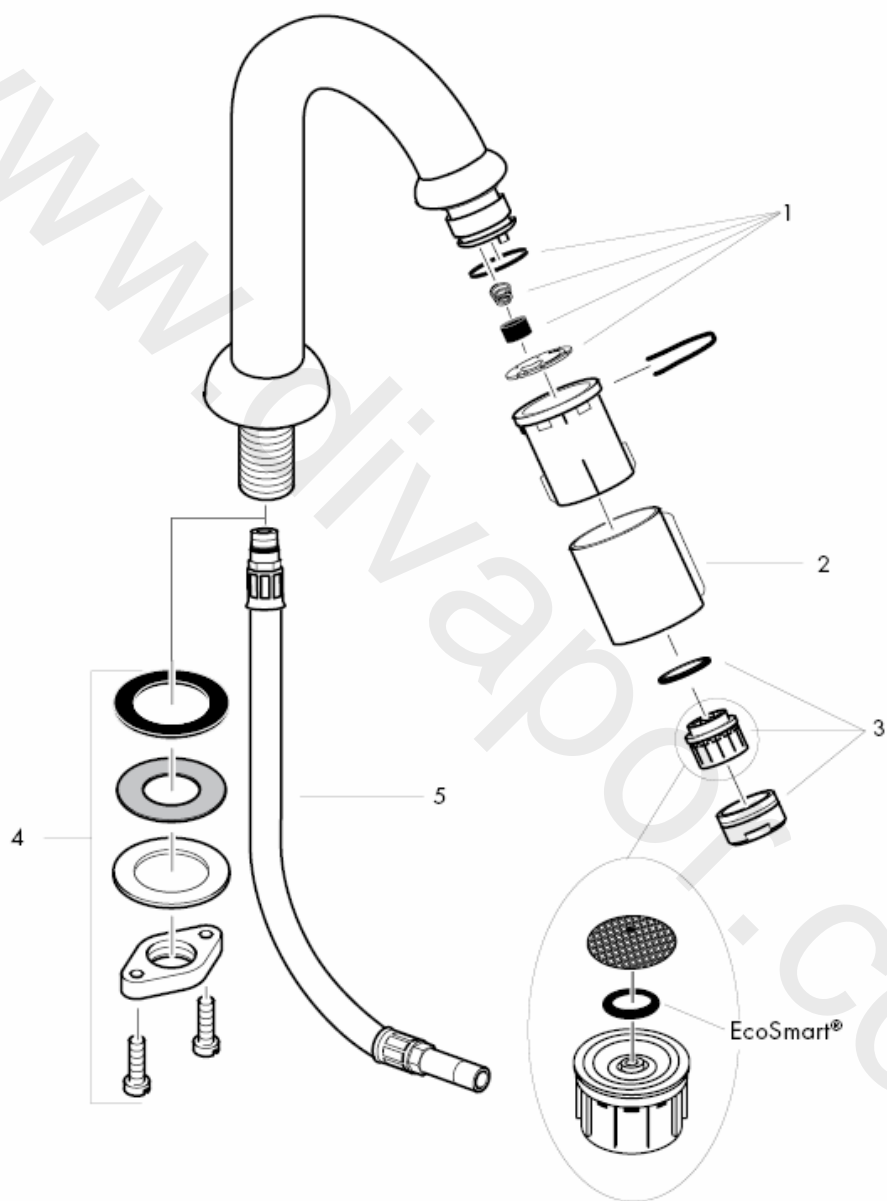
Montážní návod



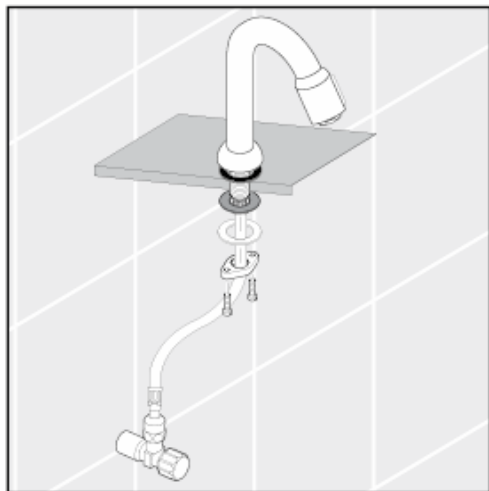
13130XXX

hansgrohe

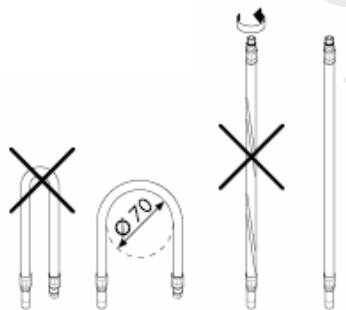




Přívodní trubky odborně propláchnout.



Montáž připojovací hadičky



Technické údaje

Armatura je sériově vybavena zařízením
EcoSmart® (omezovač průtoku)

Průtok s omezovačem průtoku: 5 l/min 0,3 MPa

Průtok bez omezovače průtoku: 11 l/min 0,3 MPa

Provozní tlak: max. 1 MPa

Doporučený provozní tlak: 0,1 – 0,5 MPa

Zkušební tlak: 1,6 MPa

(1 MPa = 10 bar = 147 PSI)

Teplota horké vody: max. 80° C

Doporučená teplota horké vody: 65° C

Servisní díly viz strana 3

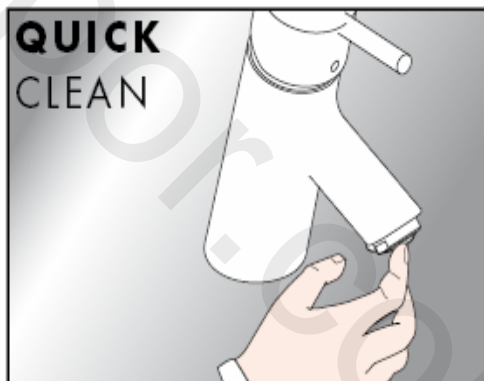
1	Servisní souprava	94156000
2	plášť odběrného kohoutku	94061XXX
3	perlátor	13185000
4	Upevnění dřívky	94702000
5	Připojovací hadička	94071000

XXX = kód povrchové úpravy

000 chrom

800 nerezová ocel

S ruční čistící funkcí QuickClean stačí
jednoduché odstranění vodního kamene prsty
z trysek kotouče tvarujícího proud vody.

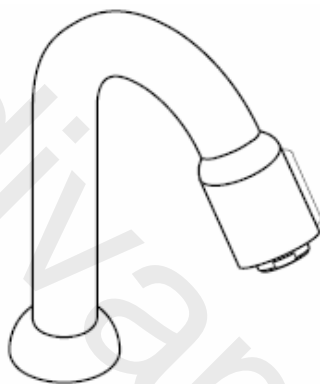


hansgrohe

Hansgrohe · Postfach 1145 · D-77761 Schiltach · Telefon +49 (0) 78 36/51-1282 · Telefax +49 (0) 7836/511440
E-Mail: info@hansgrohe.com · Internet: www.hansgrohe.com

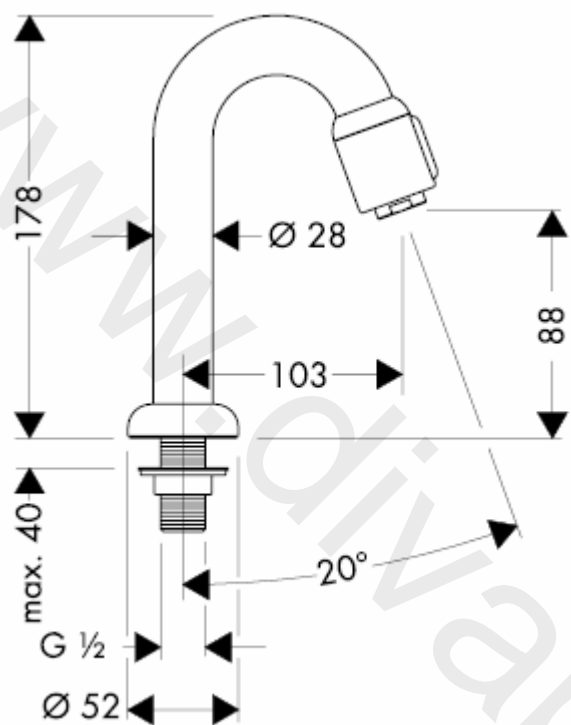
11/2009
9.0771.03
Česky

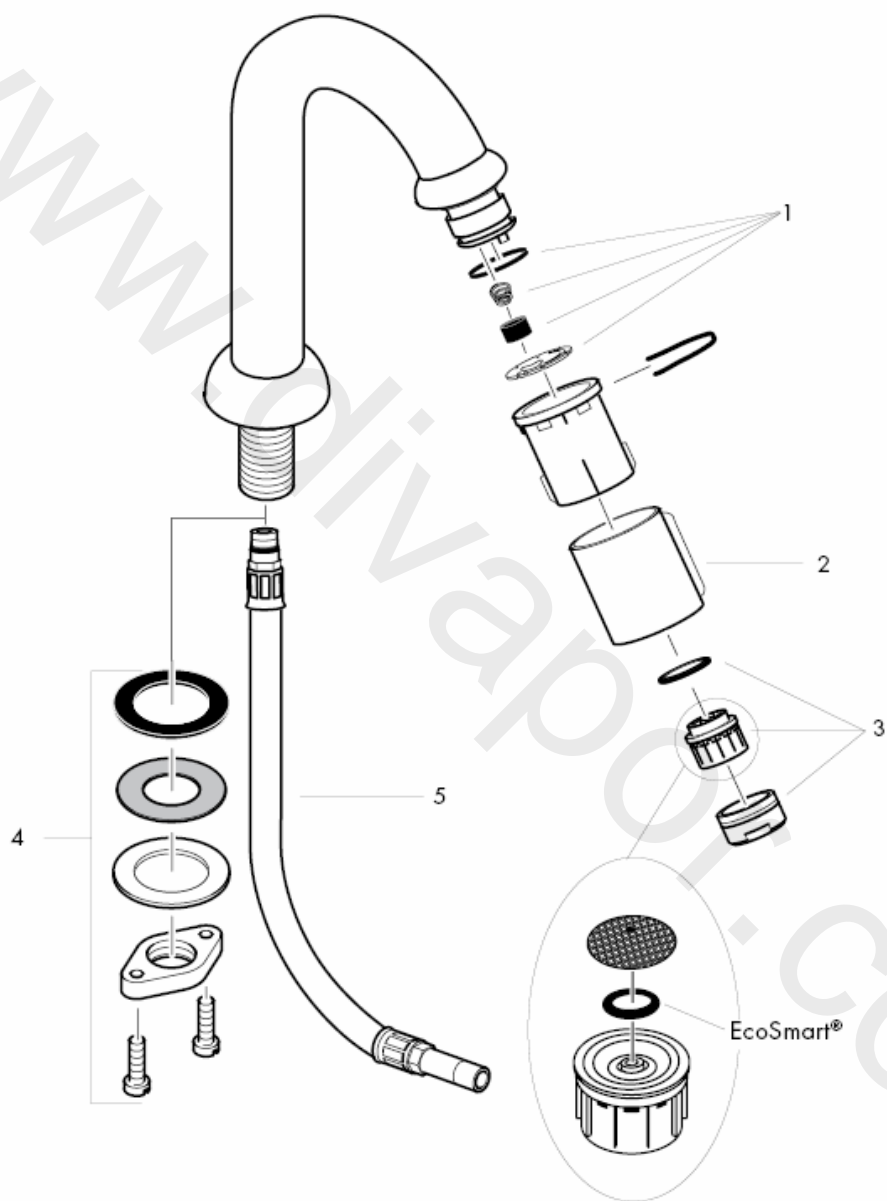
Montážny návod



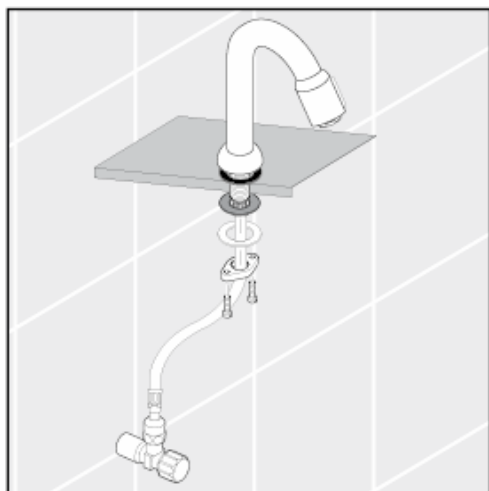
13130XXX

hansgrohe

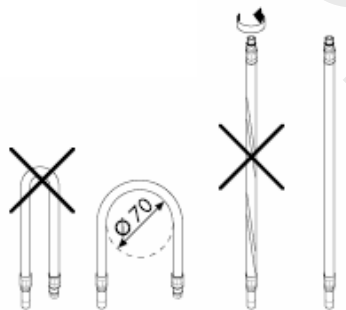




Prívodné trubky odborne prepláchnuť.



Montáž pripojovacej hadičky



Technické údaje

Armatúra je sériovo vybavená zariadením
EcoSmart® (obmedzovač prietoku)
Prietokové množstvo s prietokovým ventilom
EcoSmart: 5 l/min 0,3 MPa
Prietokové množstvo bez prietokového ventilu
EcoSmart: 11 l/min 0,3 MPa
Prevádzkový tlak: max. 1 MPa
Doporučený prevádzkový tlak: 0,1 – 0,5 MPa
Skúšobný tlak: 1,6 MPa
(1 MPa = 10 bar = 147 PSI)
Teplota teplej vody: max. 80° C
Doporučená teplota teplej vody: 65° C

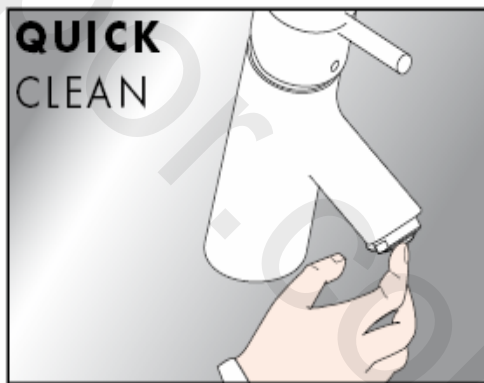
Servisné diely viď strana 3

1	servisná súprava	94156000
2	plášť uzatváracieho ventilu	94061XXX
3	perliátor	13185000
4	Kompl. upevnenie pomocou kolíka	94702000
5	pripájacia hadička	94071000

XXX = kód povrchovej úpravy

000 chróm
800 nerezová ocel

Čistiaca funkcia QuickClean, stačí na
jednoduché odstránenie vodného kameňa
prstami z trysiek kotúča tvarujúceho prúd vody.

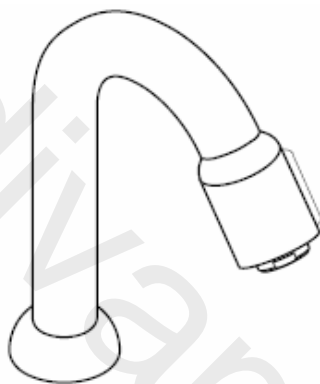


hansgrohe

Hansgrohe · Postfach 1145 · D-77761 Schiltach · Telefon +49 (0) 78 36/51-1282 · Telefax +49 (0) 7836/511440
E-Mail: info@hansgrohe.com · Internet: www.hansgrohe.com

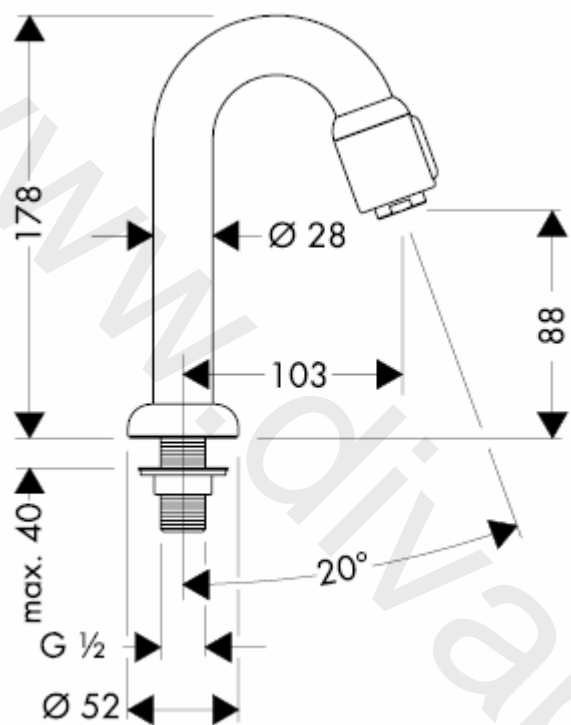
11/2009
9.0771.03
Slovensky

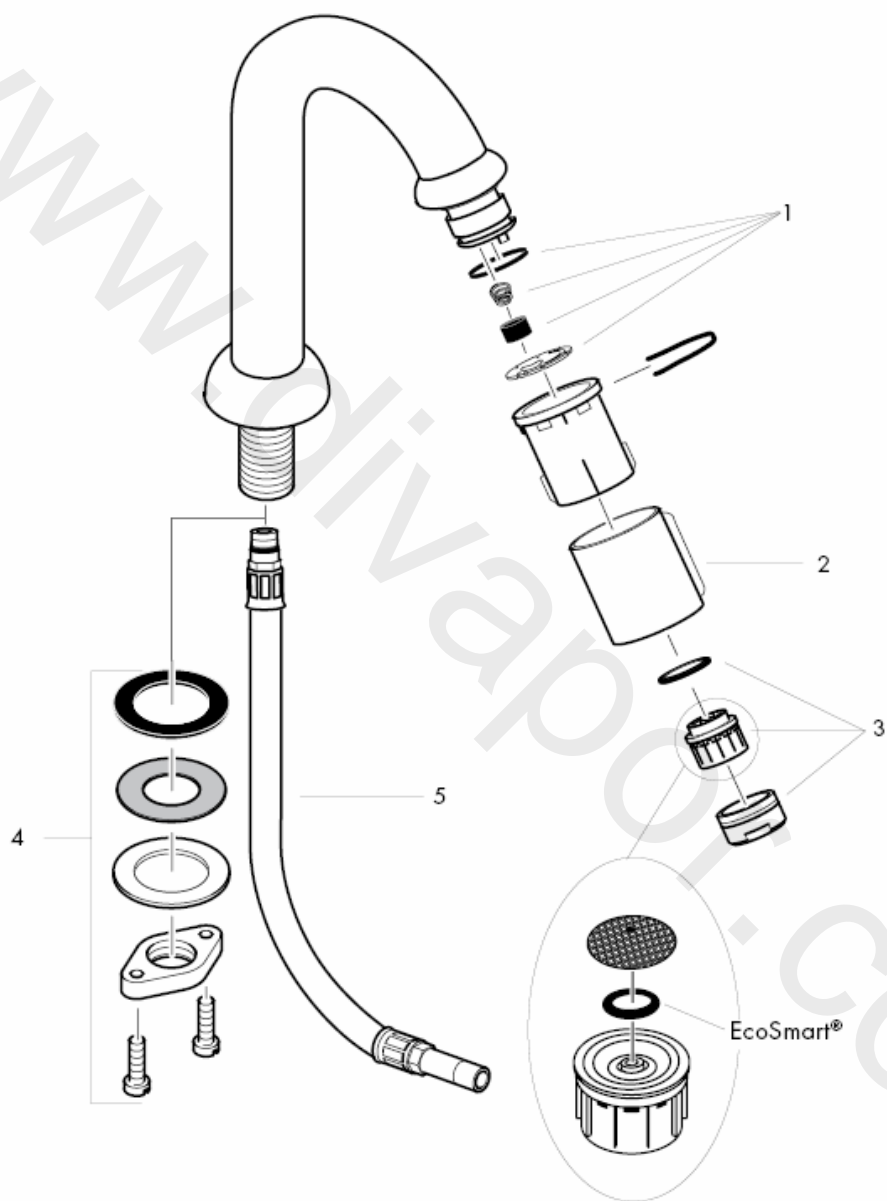
组装说明



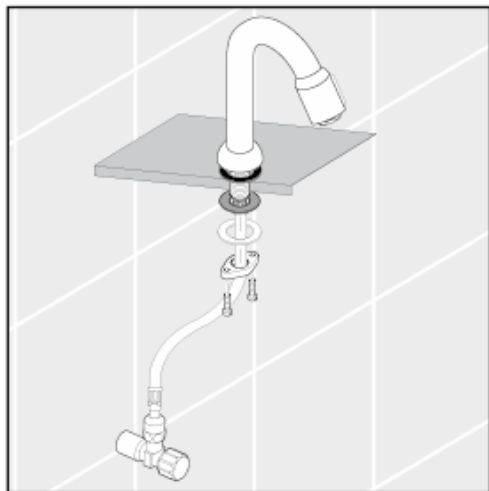
13130XXX

hansgrohe

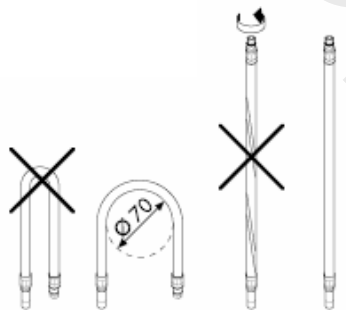




将进水管洗净。



安装连接软管



技术参数

本龙头配有 EcoSmart® (流量限制器)

带有节流器时的流速:

5 l/min 0,3 MPa

不带节流器时的流速:

11 l/min 0,3 MPa

工作压强: max. 1 MPa

推荐工作压强: 0,1 – 0,5 MPa

测试压强: 1,6 MPa

(1 MPa = 10 bar = 147 PSI)

热水温度: max. 80° C

推荐热水温度: 65° C

备用零件 参见第页 3

1	维修工具	94156000
2	截止阀盖	94061XXX
3	水波器	13185000
4	固定件	94702000
5	连接软管	94071000

XXX = 颜色代码

000 镀铬

800 不锈钢表面

有了QuickClean, 手工清洁功能, 要去掉喷头上的水垢, 只需简单地搓除即可。

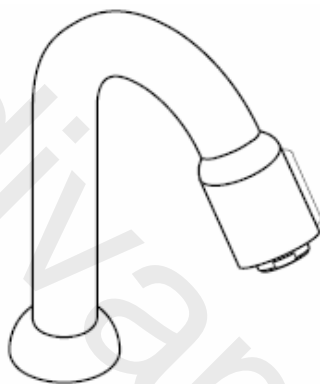


hansgrohe

Hansgrohe · Postfach 1145 · D-77761 Schiltach · Telefon +49 (0) 78 36/51-1282 · Telefax +49 (0) 7836/511440
E-Mail: info@hansgrohe.com · Internet: www.hansgrohe.com

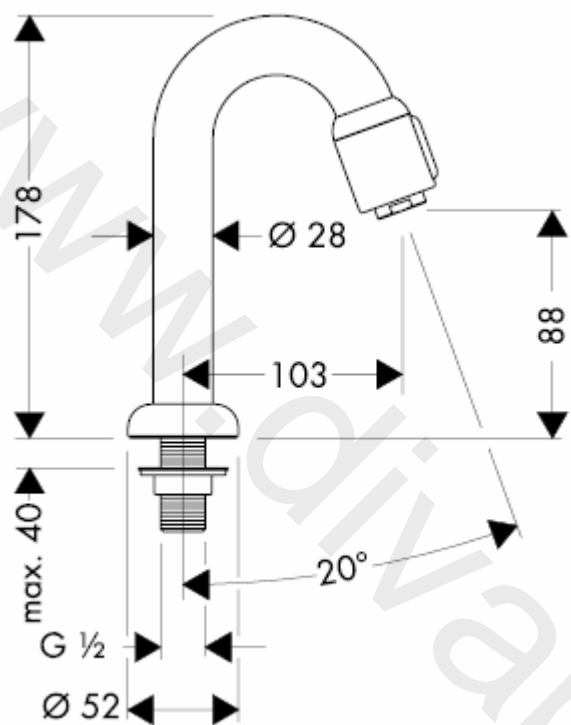
11/2009
9.0771.03
中文

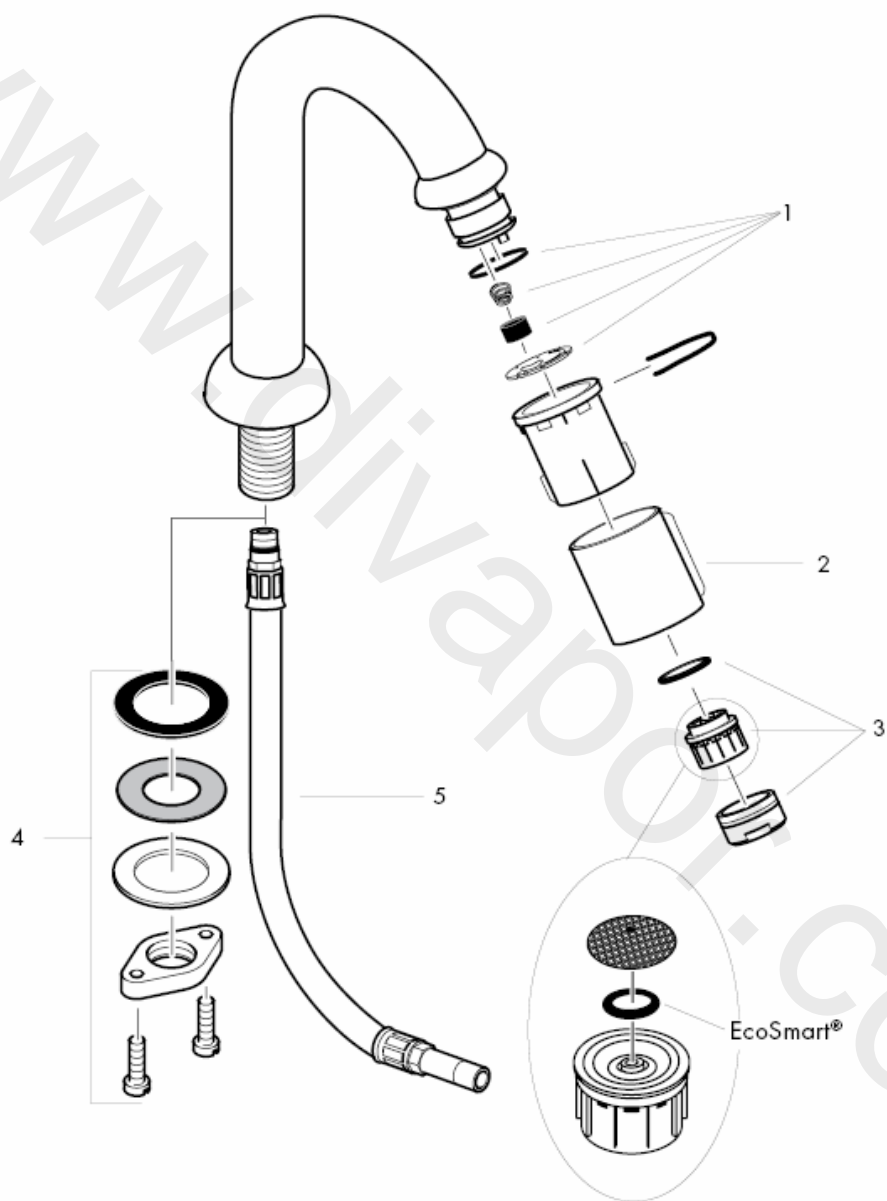
Инструкция по монтажу



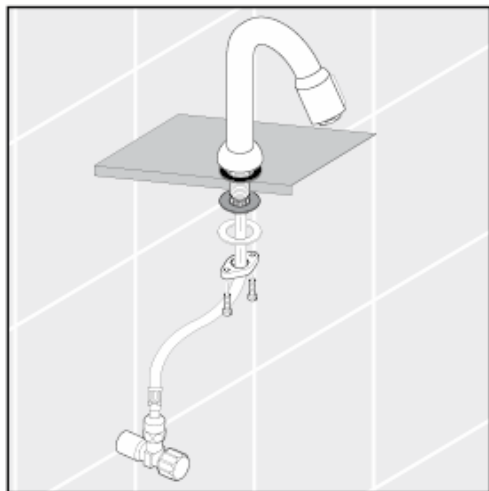
13130XXX

hansgrohe

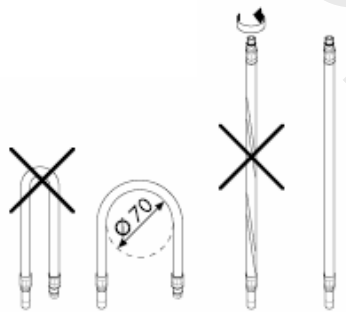




тщательно промыть водопроводные
трубы, спустив некоторое количество
воды;



Монтаж подводки



Технические данные

Смесители этой серии серийно оснащаются EcoSmart® (ограничителем потока воды)

Пропускная способность:

5 l/min 0,3 MPa

Пропускная способность без ограничителя потока воды (EcoSmart):

11 l/min 0,3 MPa

Рабочее давление: max. 1 MPa

Рекомендуемое рабочее давление: 0,1 – 0,5 MPa

Давлении: 1,6 MPa

(1 МПа = 10 bar = 147 PSI)

Температура горячей воды: max. 80° C

Рекомендуемая темп. гор. воды: 65° C

Комплект см. стр. 3

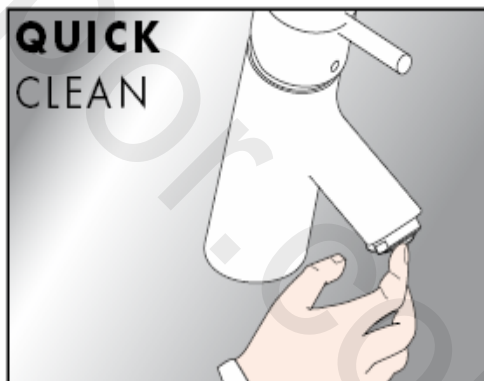
1	гарнитурный набор	94156000
2	Обшивка наливного вентиля	94061XXX
3	Аэратор	13185000
4	Крепеж	94702000
5	Подводка	94071000

XXX = Код цвета поверхности

000 хром

800 сталь

система QuickClean позволяет удалять известковые отложения, достаточно провести по эластичной поверхности аэратора пальцем, как известковые отложения будут удалены.

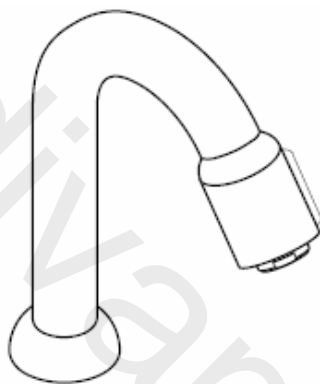


hansgrohe

Hansgrohe · Postfach 1145 · D-77761 Schiltach · Telefon +49 (0) 78 36/51-1282 · Telefax +49 (0) 7836/511440
E-Mail: info@hansgrohe.com · Internet: www.hansgrohe.com

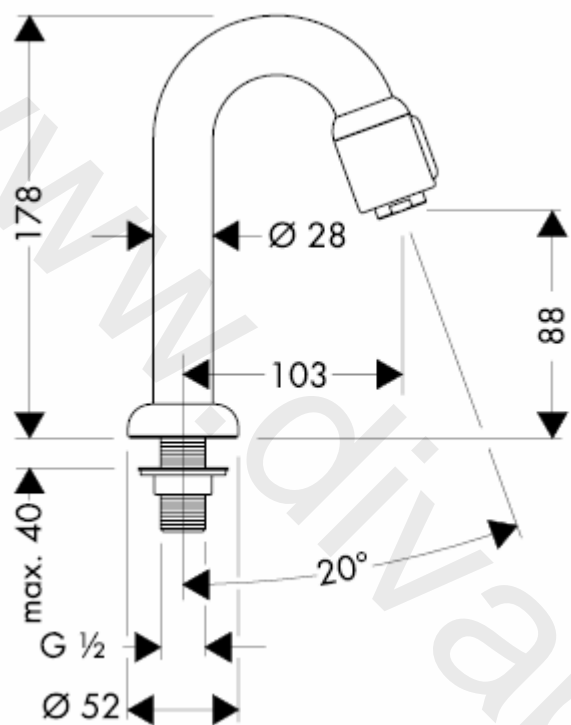
11/2009
9.0771.03
Русский

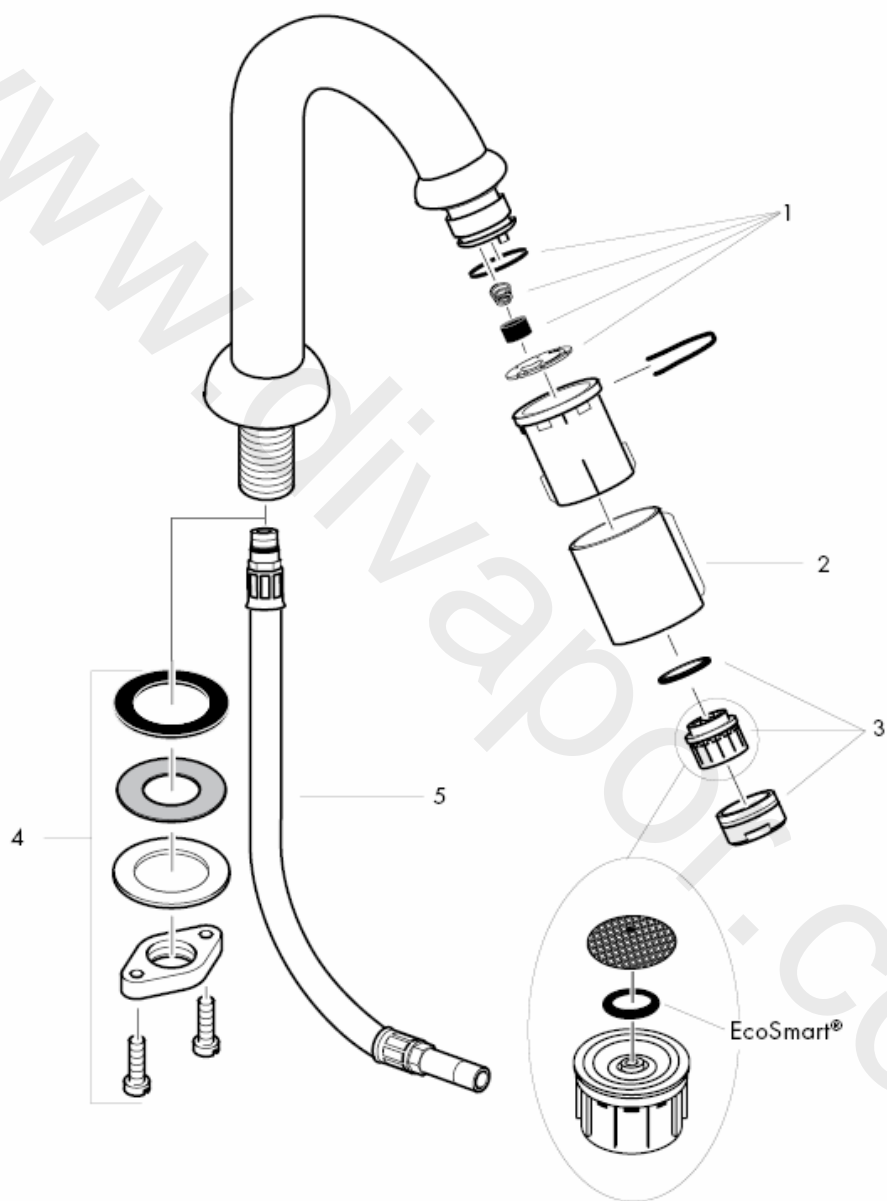
Szerelési útmutató



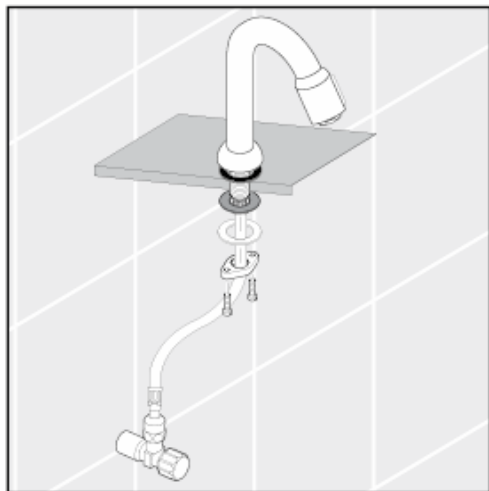
13130XXX

hansgrohe

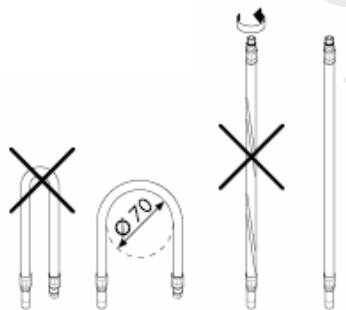




A vezetékeket gondosan átöblítjük.



bekötőcső összeszerelése



Műszaki adatok

A csaptelep szériakivitelben el van látva
EcoSmart® (átfolyáskorlátozó) berendezéssel
Átfolyó vízmennyiség vízkorlátozóval:
5 l/min 0,3 MPa
Átfolyási teljesítmény, EcoSmart nélkül:
11 l/min 0,3 MPa
Üzemi nyomás: max. 1 MPa
Ajánlott üzemi nyomás: 0,1 – 0,5 MPa
Nyomáspróba: 1,6 MPa
(1 MPa = 10 bar = 147 PSI)
Forróvíz hőmérséklet: max. 80° C
Forróvíz javasolt hőmérséklete: 65° C

Tartozékok lásd a oldalon 3

1	Szervízkészlet	94156000
2	Csapszelep-burkolat	94061XXX
3	Perlátor	13185000
4	Alsó rögzítőrész	94702000
5	Bekötőcső	94071000

XXX = Szinkódok

000 króm
800 acéloptika

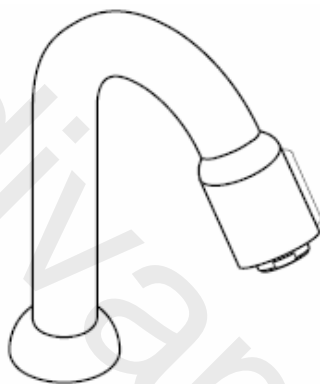
A QuickClean manuális tisztítófunkciónak
köszönhetően a vízszugárnyílások egyszerű
ledörzsöléssel megtisztíthatóak a vízkőtől.



hansgrohe

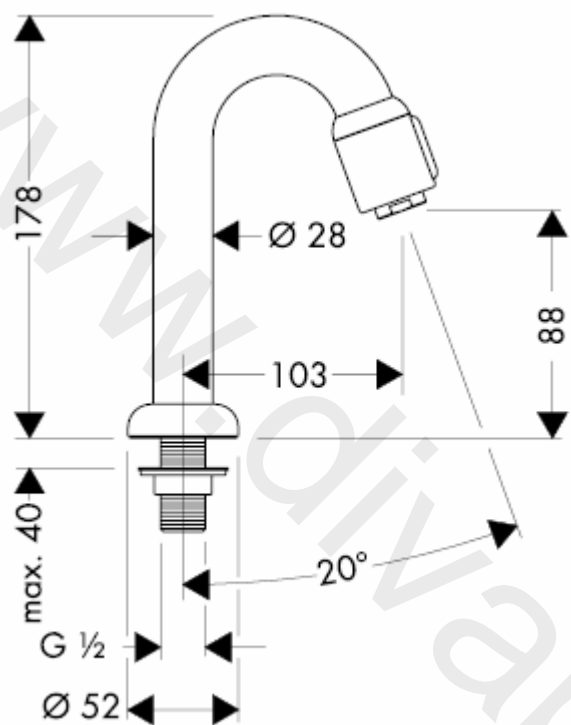
Hansgrohe · Postfach 1145 · D-77761 Schiltach · Telefon +49 (0) 78 36/51-1282 · Telefax +49 (0) 7836/511440
E-Mail: info@hansgrohe.com · Internet: www.hansgrohe.com

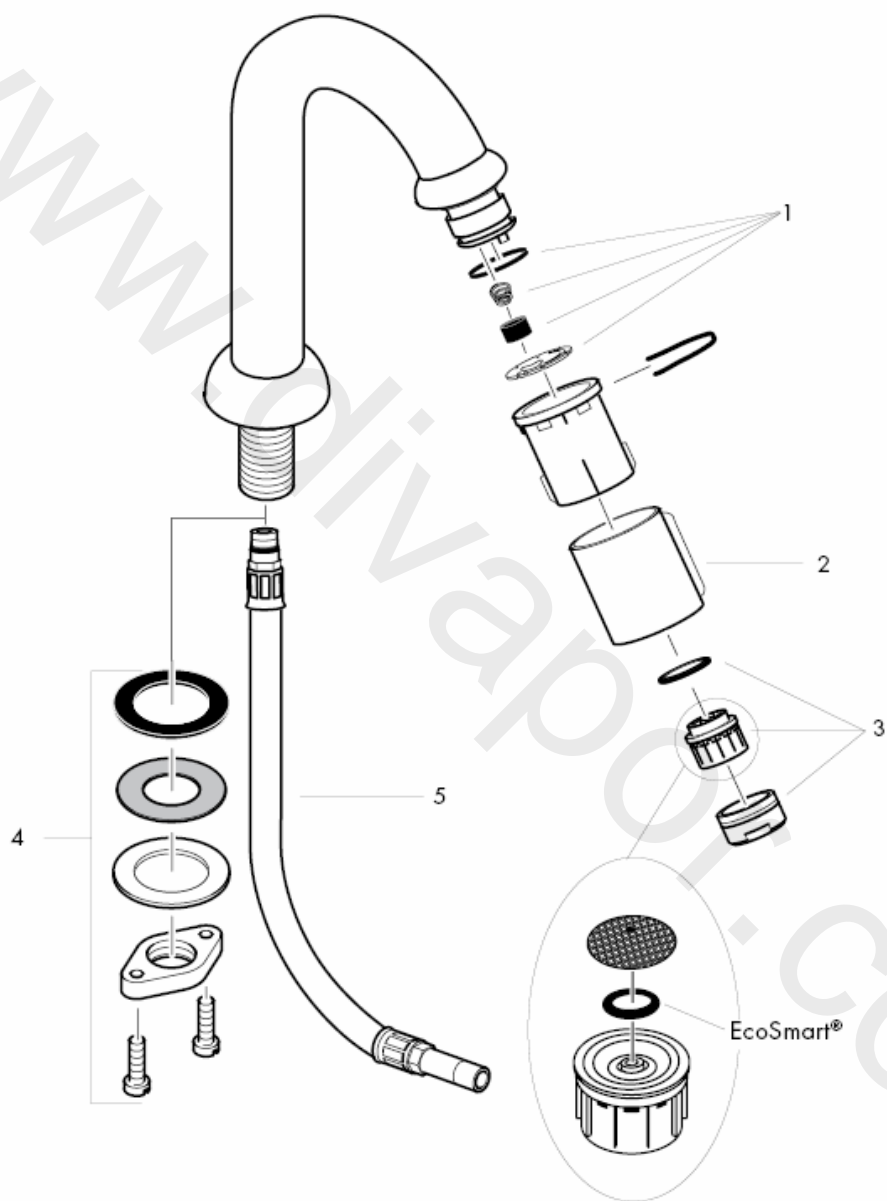
Asennusohje



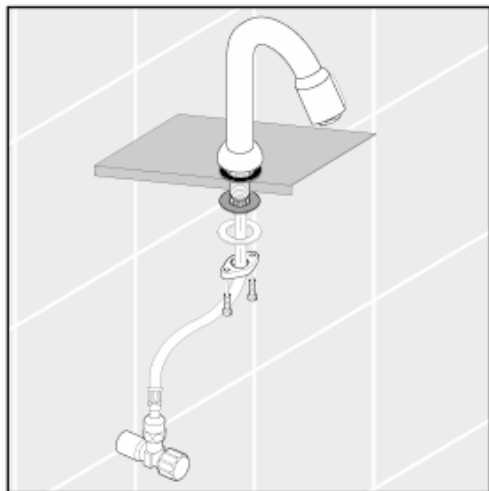
13130XXX

hansgrohe

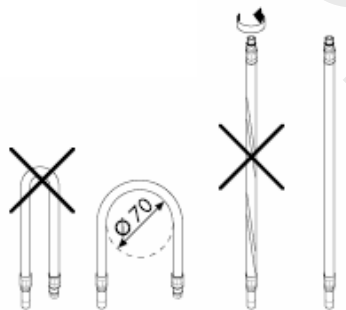




Huuhtele syöttöputken asianmukaisesti.



Liitäntäletkun asennus



Tekniset tiedot

Kaluste on vakiona varustettu EcoSmart®
(virtauksenrajoittimella)

Läpivirtausmäärä EcoSmart: iä käytettäessä:

5 l/min 0,3 MPa

Läpivirtausmäärä ilman EcoSmart:iä:

11 l/min 0,3 MPa

Käyttöpaine: max. 1 MPa

Suositteltu käyttöpaine: 0,1 – 0,5 MPa

Koestuspaine: 1,6 MPa

(1 MPa = 10 bar = 147 PSI)

Kuuman veden lämpötila: max. 80° C

Kuuman veden suosituslämpötila: 65° C

Varaosat katso sivu 3

1	Service Set	94156000
2	Hanapeite	94061XXX
3	Poresuutin, täydellinen	13185000
4	Kiristyslevy ja mutteri	94702000
5	Liitinletku	94071000

XXX = Värikoodi

000 kromi

800 inox-optinen

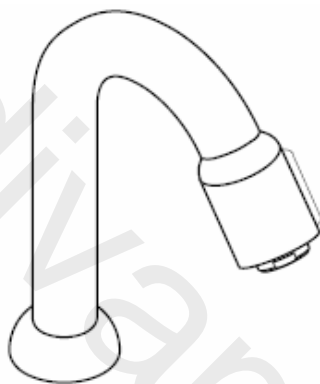
QuickClean –käsitoiminen
kalkinpoistojärjestelmä on helppo käyttää:
hiero sormella ja vedentulo on taas esteetön.



hansgrohe

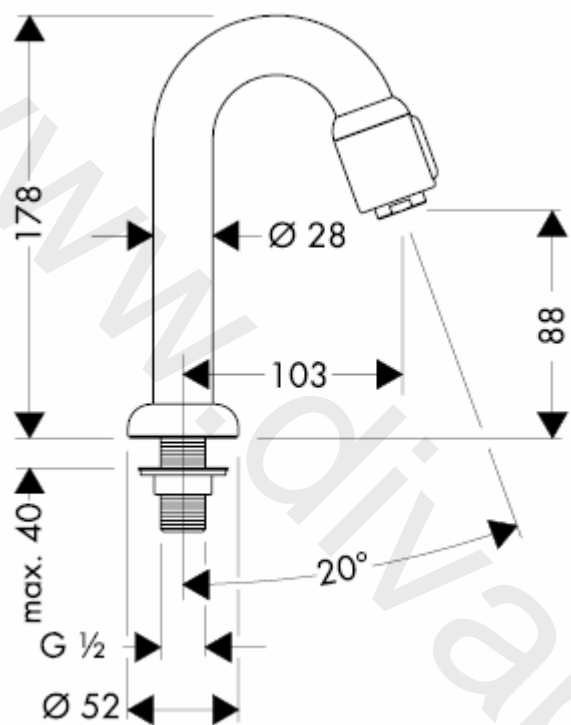
Hansgrohe · Postfach 1145 · D-77761 Schiltach · Telefon +49 (0) 78 36/51-1282 · Telefax +49 (0) 7836/511440
E-Mail: info@hansgrohe.com · Internet: www.hansgrohe.com

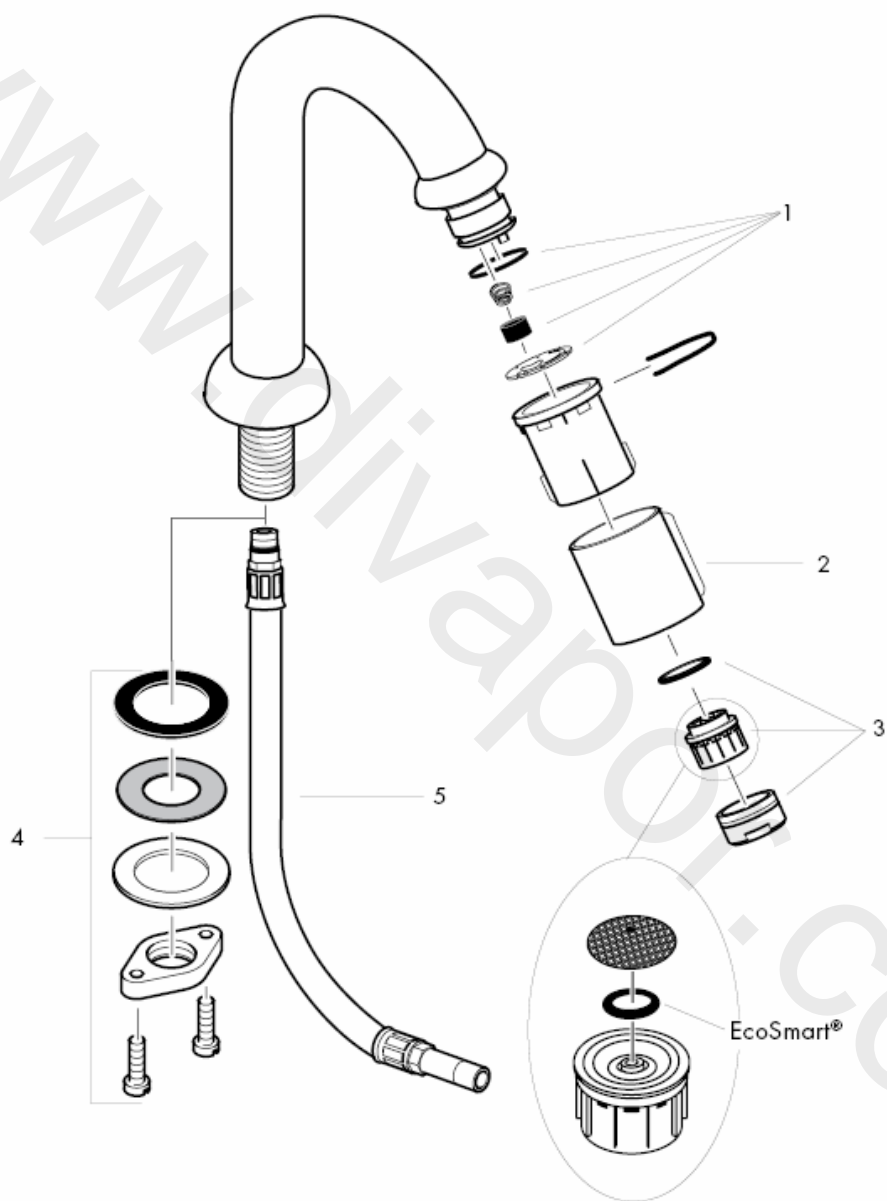
Monteringsanvisning



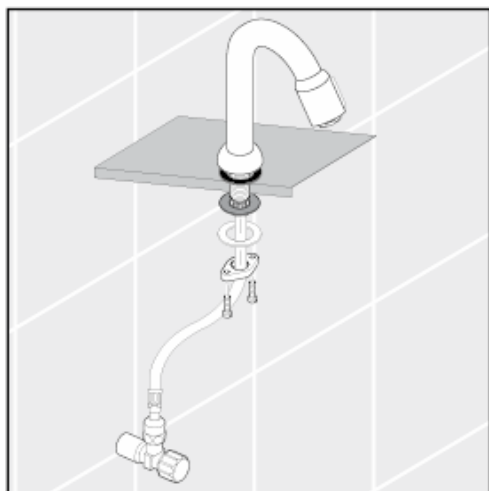
13130XXX

hansgrohe

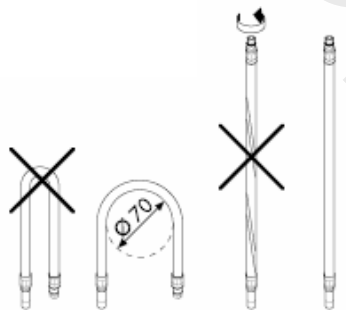




Sköj tillförselledningarna noga.



Montering anslutningsslang



Tekniska data

Blandare seriemässigt med EcoSmart®
(flödeskontroll)

Genomströmningskapacitet med EcoSmart:
5 l/min 0,3 MPa

Genomströmningskapacitet utan EcoSmart:
11 l/min 0,3 MPa

Driftstryck: max. 1 MPa

Rek. driftstryck: 0,1 – 0,5 MPa

Tryck vid provtryckning: 1,6 MPa

(1 MPa = 10 bar = 147 PSI)

Varmvattentemperatur: max. 80° C

Rek. varmvattentemp.: 65° C

Reservdelar se sidan 3

1	Serviceset	94156000
2	Skydd för tappventil	94061XXX
3	Komplett perlator	13185000
4	Stagmontering kompl.	94702000
5	Anslutningsslang	94071000

XXX = Färgkodning

000

800 rostfri-optik

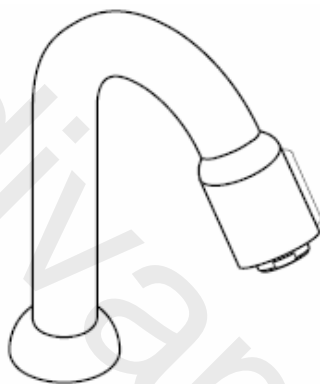
Med QuickClean, den manuella rengöringsfunktionen, är det lätt att befria strålkanalerna från kalk - de ska bar gnuggas.



hansgrohe

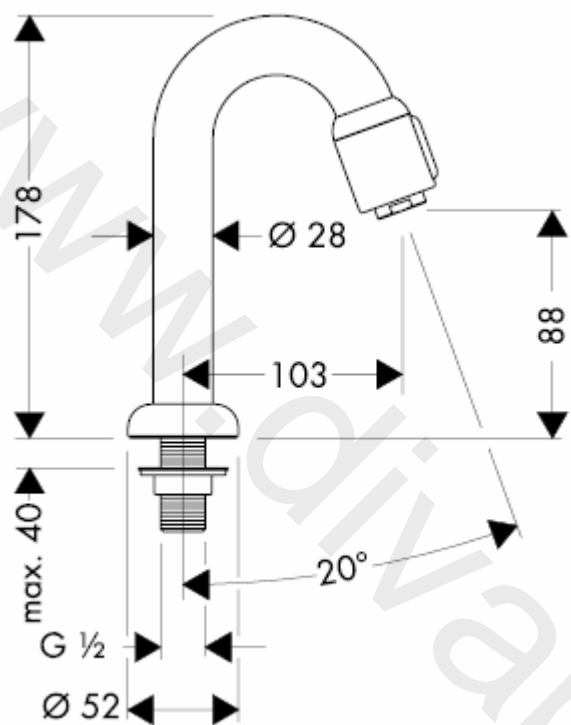
Hansgrohe · Postfach 1145 · D-77761 Schiltach · Telefon +49 (0) 78 36/51-1282 · Telefax +49 (0) 7836/511440
E-Mail: info@hansgrohe.com · Internet: www.hansgrohe.com

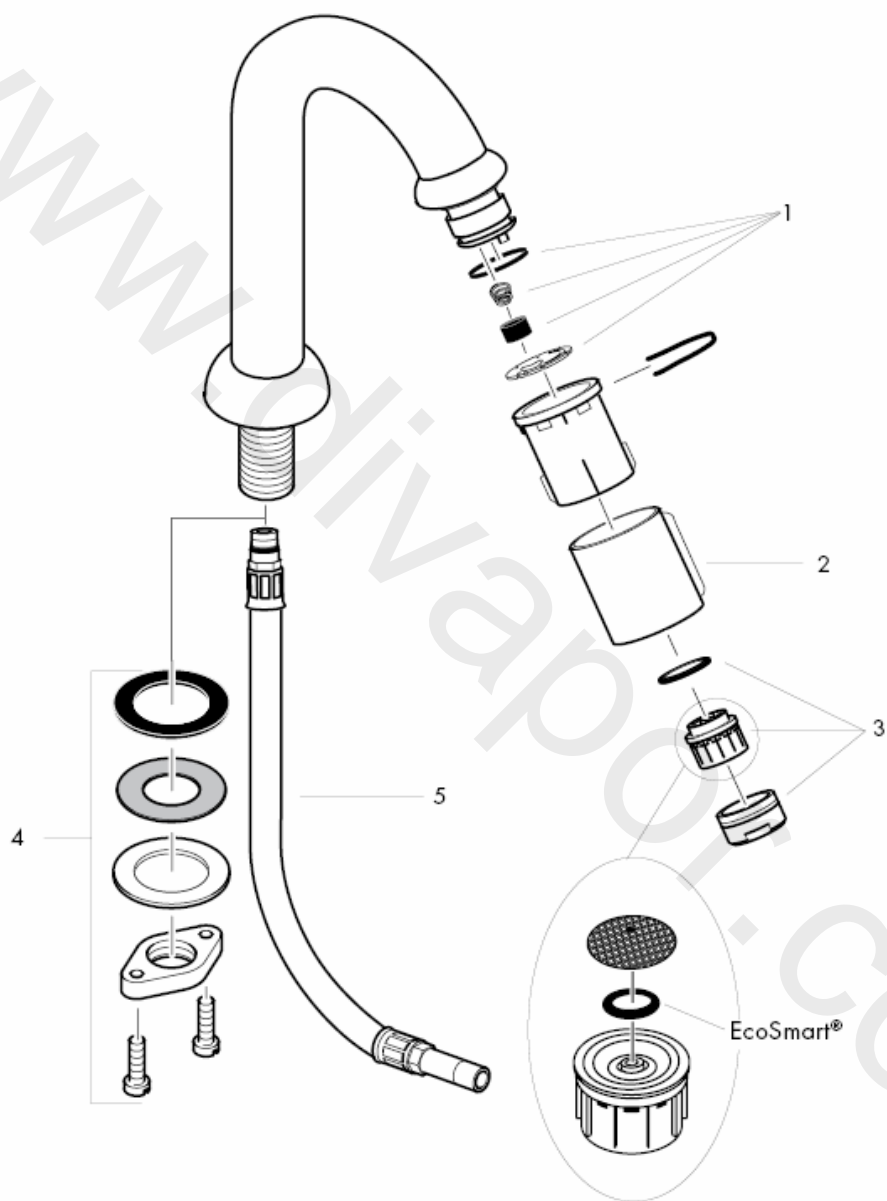
Montavimo instrukcijos



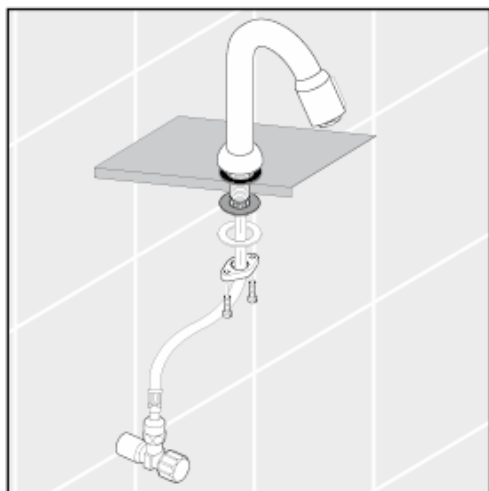
13130XXX

hansgrohe

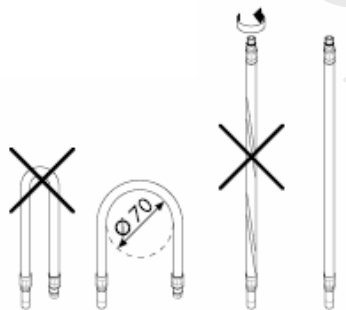




Išplauti vamzdžius.



Prijungimo žarnų montavimas



Techniniai duomenys

Šios serijos maišytuvai turi EcoSmart® (vandens srauto ribotuva)

Vandens pralaidumas su oro kompresoriumi:
5 l/min 0,3 MPa

Vandens pralaidumas be oro kompresoriaus:
11 l/min 0,3 MPa

Darbinis slėgis: max. 1 MPa

Rekomenduojamas slėgis: 0,1 – 0,5 MPa

Bandomasis slėgis: 1,6 MPa

(1 MPa = 10 barų = 147 PSI)

Karšto vandens temperatūra: max. 80° C

Rekomenduojama karšto vandens temperatūra:
65° C

Atsarginės dalys žr. psl. 3

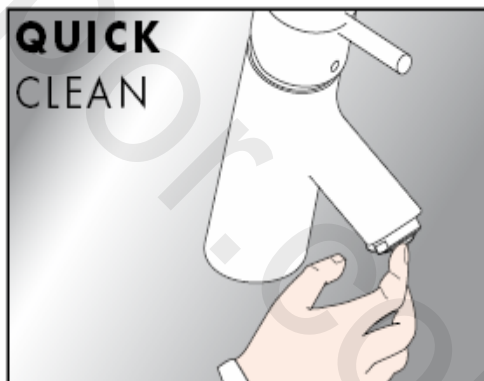
1	priežiūros rinkinys	94156000
2	dangtis vožtuvui	94061XXX
3	oro kompresorius	13185000
4	fiksavimo rinkinys	94702000
5	Prijungimo žarna	94071000

XXX = Spalva

000 chrom

800 plienas

"QuickClean" valymo funkcija apsaugo nuo apkalkėjimo. Užtenka pirštu nubraukti atsiradusius nešvarumus nuo srovės angų.

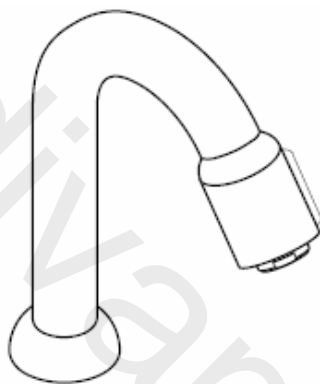


hansgrohe

Hansgrohe · Postfach 1145 · D-77761 Schiltach · Telefon +49 (0) 78 36/51-1282 · Telefax +49 (0) 7836/511440
E-Mail: info@hansgrohe.com · Internet: www.hansgrohe.com

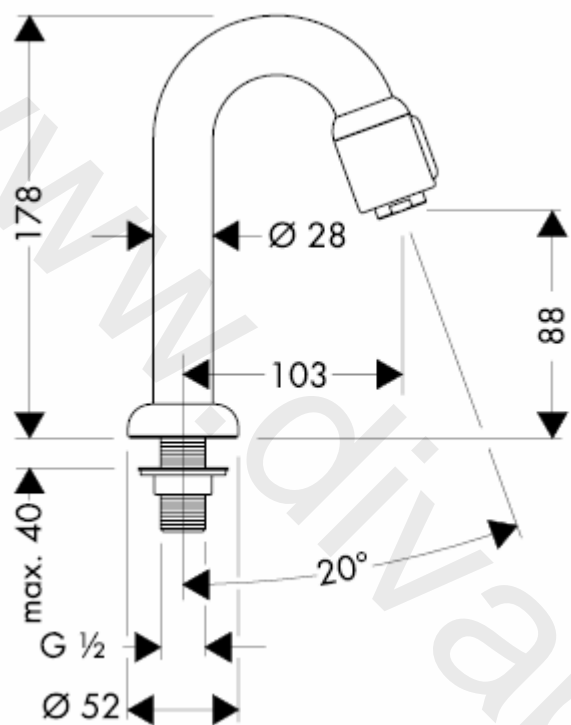
11/2009
9.0771.03
Lietuviškai

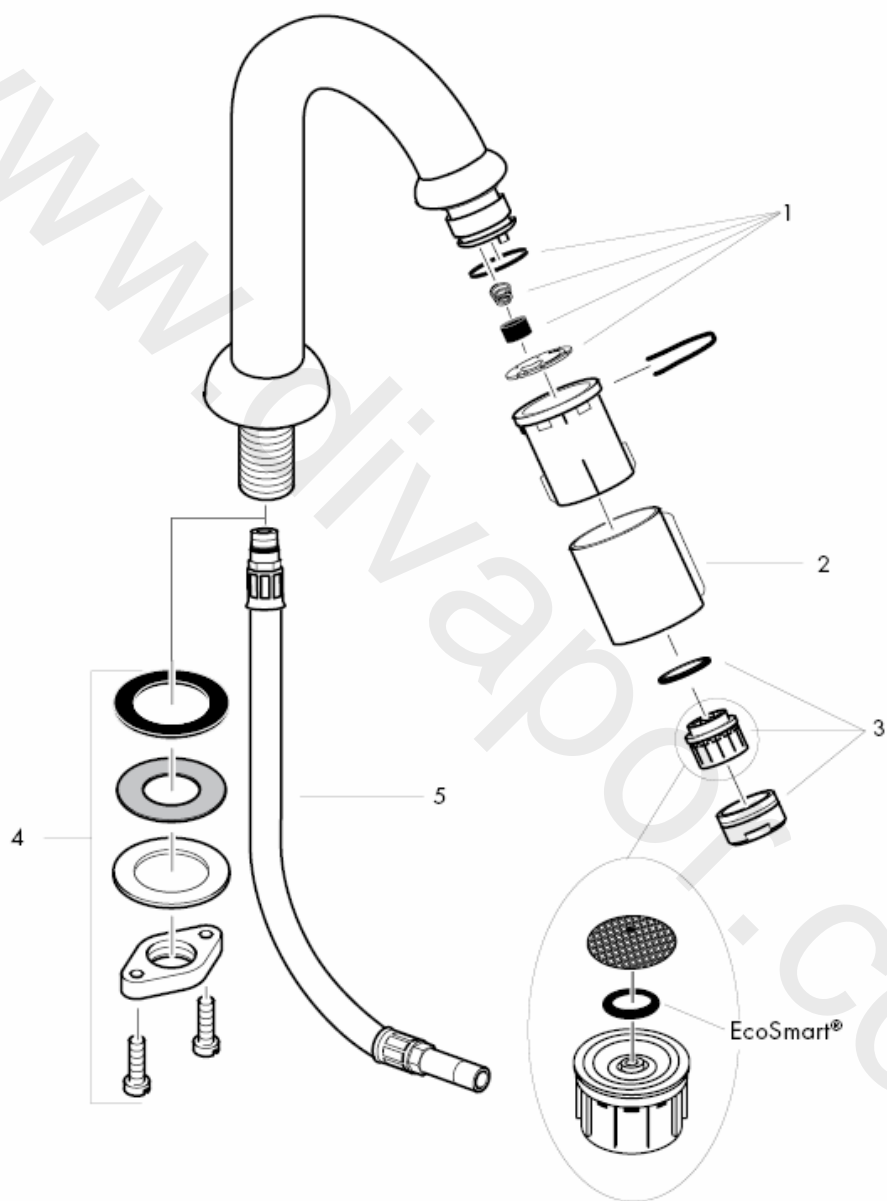
Uputstva za instalaciju



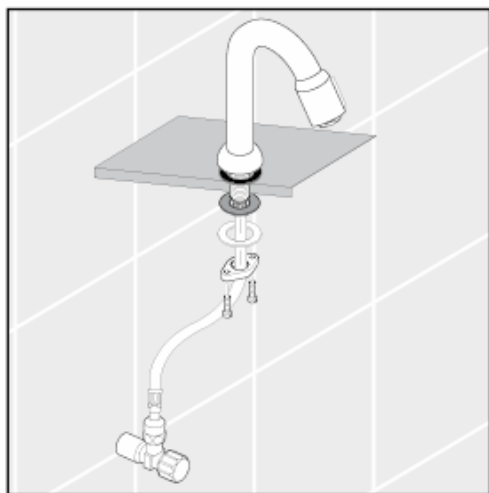
13130XXX

hansgrohe

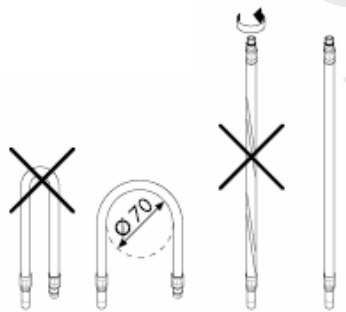




Isperite cijevi dovoda.



montaža priključne cijevi



Tehnički podatci

Armatura ima serijski ugrađen EcoSmart®
(limitator protoka)

Protok vode sa EcoSmart-om: 5 l/min 0,3 MPa

Protok vode bez EcoSmart-a: 11 l/min 0,3 MPa

Najveći dopušteni tlak: max. 1 MPa

Preporučeni tlak: 0,1 – 0,5 MPa

Probni tlak: 1,6 MPa

(1 MPa = 10 bar = 147 PSI)

Temperatura vruće vode: max. 80° C

Preporučena temperatura vruće vode: 65° C

Rezervni djelovi pogledaj stranicu 3

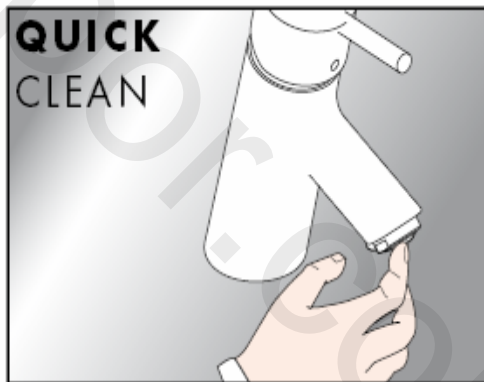
1	Servisni set	94156000
2	Obloga ventila za zatvaranje	94061XXX
3	Aerator pozlaćeni	13185000
4	Matica za učvršćivanje slavine	94702000
5	Dovodna cijev	94071000

XXX = Boje

000 krom

800 plemeniti čelik

QuickClean - ručni sustav za čišćenje
omogućuje jednostavnim trljanjem
odstranjivanje kamenca sa rupica prskalice
tuša.

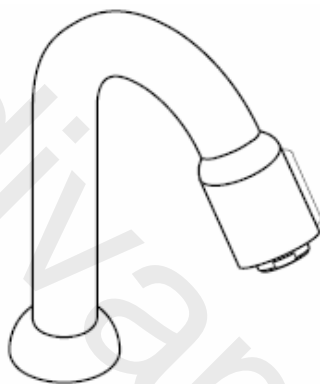


hansgrohe

Hansgrohe · Postfach 1145 · D-77761 Schiltach · Telefon +49 (0) 78 36/51-1282 · Telefax +49 (0) 7836/511440
E-Mail: info@hansgrohe.com · Internet: www.hansgrohe.com

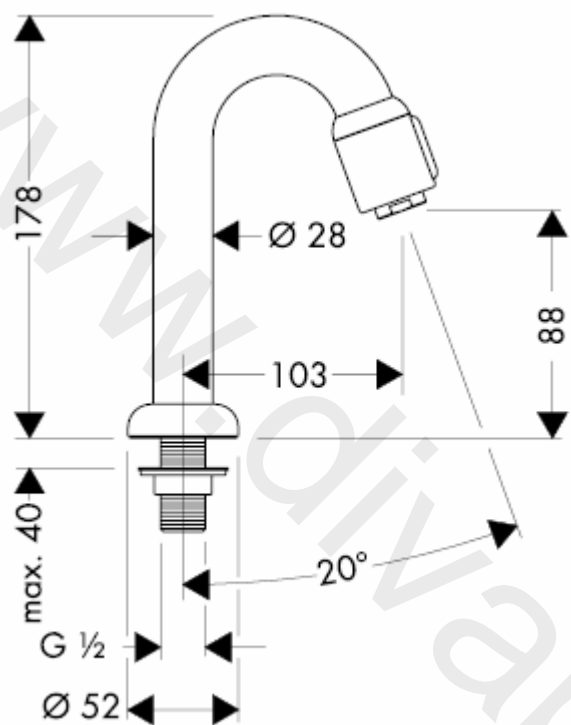
11/2009
9.0771.03
Hrvatski

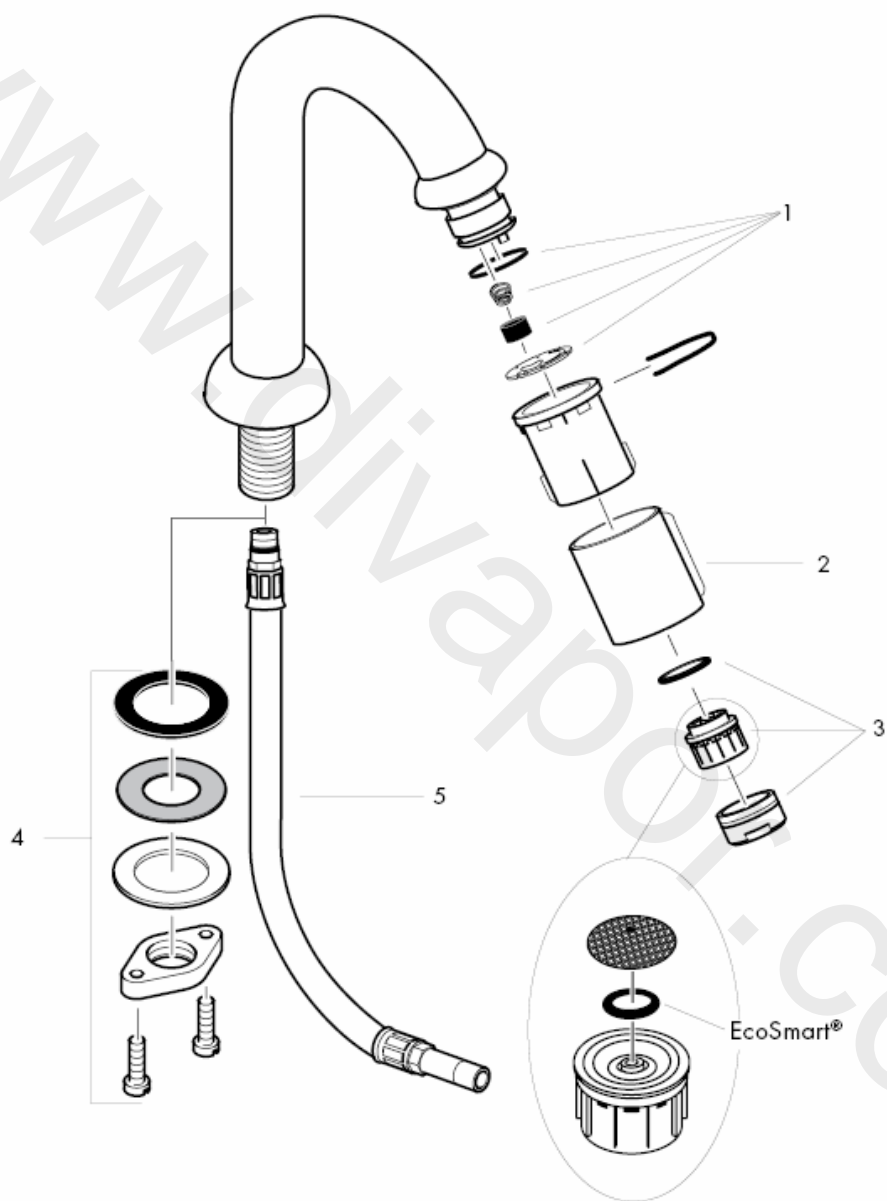
Montaj kılavuzu



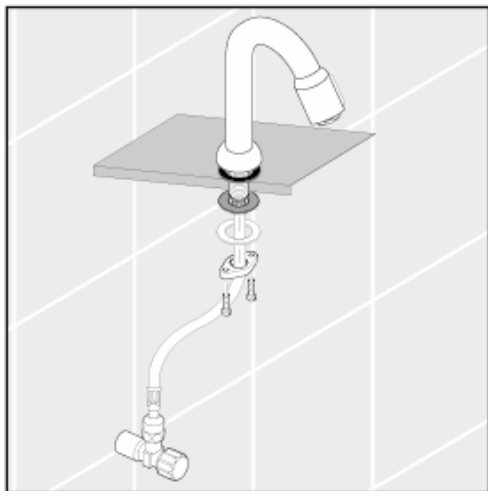
13130XXX

hansgrohe

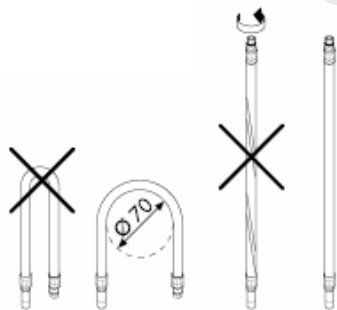




Su giriř hatlarından su akıtarak boruları iyice temizleyiniz.



Baęlantı hortumunun montajı



Teknik bilgiler

Batarya EcoSmart® (akış sınırlayıcısı) ile birlikte
seri olarak

Debisi (akış sınırlayıcısı ile):

5 l/min 0,3 MPa

Debisi (akış sınırlayıcısız):

11 l/min 0,3 MPa

İşletme basıncı: max. 1 MPa

Tavsiye edilen işletme basıncı: 0,1 – 0,5 MPa

Kontrol basıncı: 1,6 MPa

(1 MPa = 10 bar = 147 PSI)

Sıcak su sıcaklığı: max.80° C

Tavsiye edilen su ısısı: 65° C

Yedek Parçalar Bakınız sayfa 3

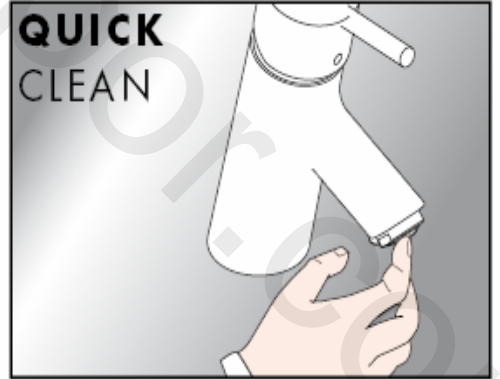
1	Servis seti	94156000
2	Tapalı valf kaplaması	94061XXX
3	Perlatör	13185000
4	Montaj elemanı	94702000
5	Bağlantı hortumu	94071000

XXX = Renkler

000 krom

800 paslanmaz çelik - optik

QuickClean, üründe bulunan bir temizleme
fonksiyonudur. Basit bir ovuşturma ile sprey
modüllerdeki kireci çözer.

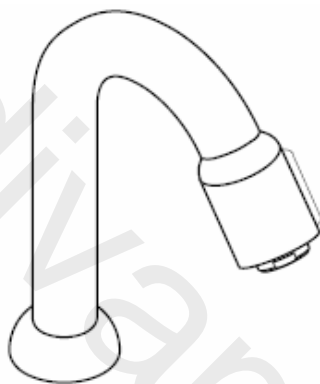


hansgrohe

Hansgrohe · Postfach 1145 · D-77761 Schiltach · Telefon +49 (0) 78 36/51-1282 · Telefax +49 (0) 7836/511440
E-Mail: info@hansgrohe.com · Internet: www.hansgrohe.com

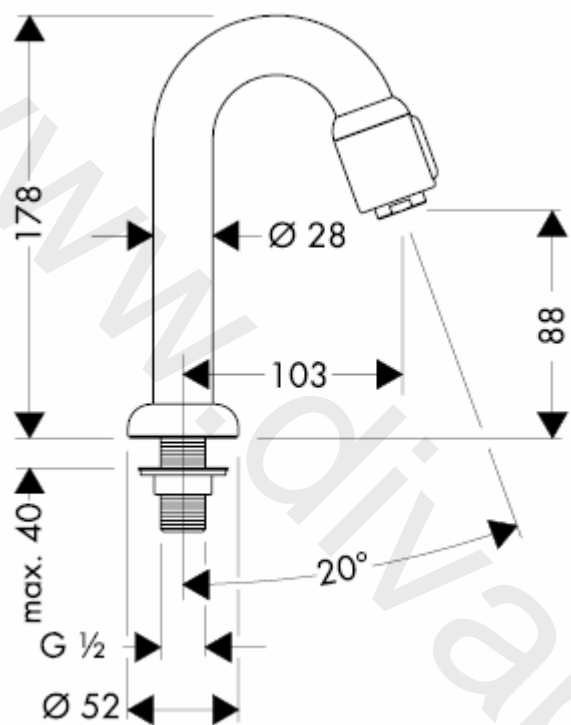
11/2009
9.0771.03
Türkçe

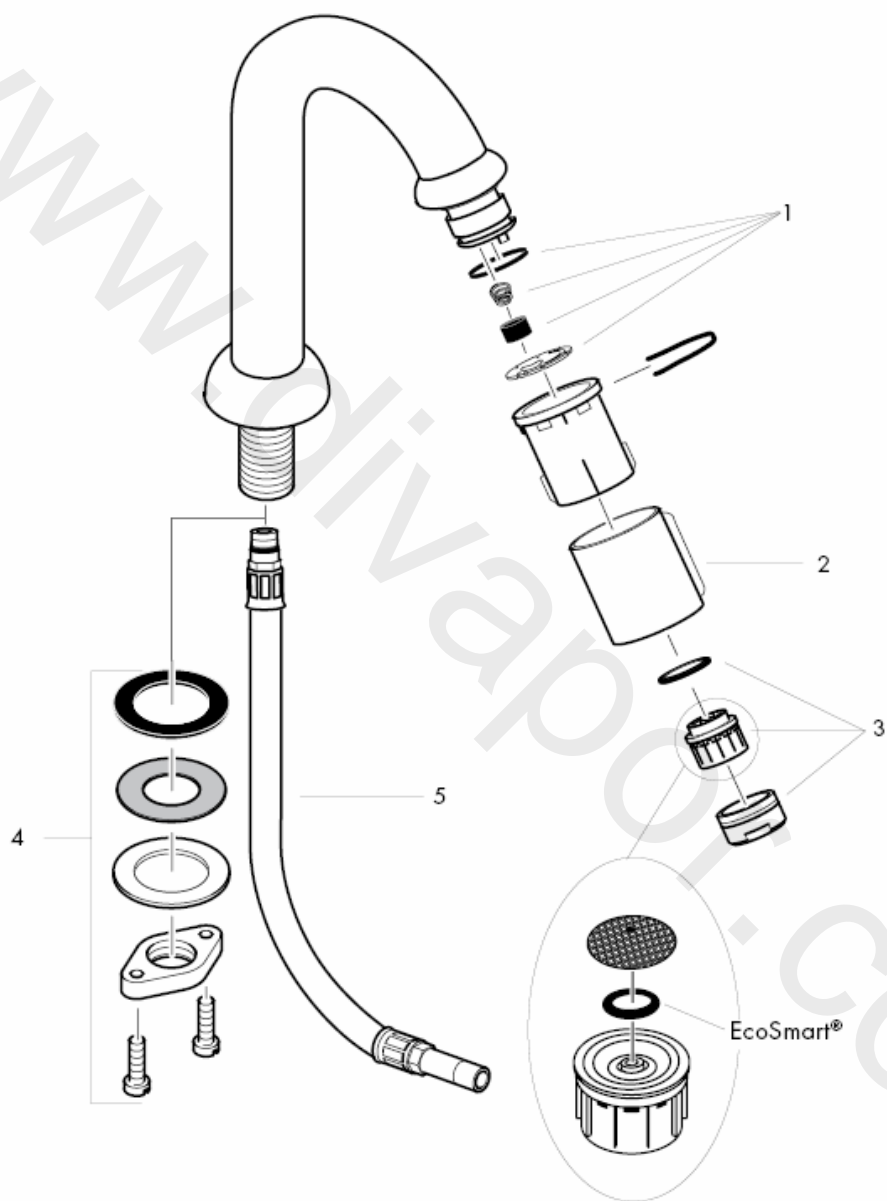
Instrucțiuni de montare



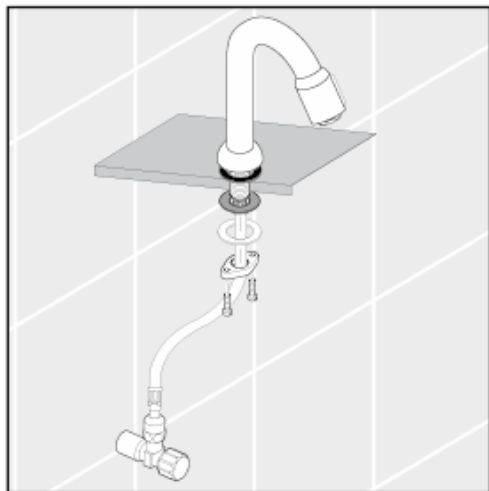
13130XXX

hansgrohe

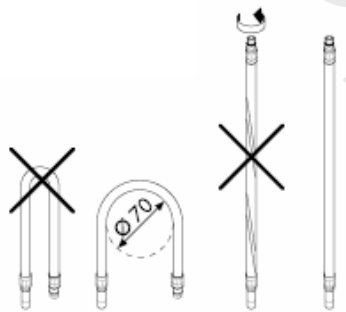




Clătiți conductele de alimentare în mod profesional.



Montarea furtunului de racord



Date tehnice

Bateria este dotată în serie cu EcoSmart®
(limitator de debit)

Debit de apă cu EcoSmart: 5 l/min 0,3 MPa

Debit de apă fără EcoSmart: 11 l/min 0,3 MPa

Presiune de funcționare: max. 1 MPa

Presiune de funcționare recomandată: 0,1 – 0,5 MPa

Presiune de verificare: 1,6 MPa
(1 MPa = 10 bar = 147 PSI)

Temperatura apei calde: max. 80° C

Temperatura recomandată a apei calde: 65° C

Piese de schimb vezi pag. 3

1	Set service	94156000
2	Capac pentru ventil de scurgere	94061XXX
3	Pulverizator aer cpl.	13185000
4	Sistem de fixare cpl.	94702000
5	Furtun de racordare	94071000

XXX = cod de culori

000 crom

800 otel inox

Cu ajutorul sistemului QuickClean puteți să îndepărtați depunerile de calcar de pe diferitele duze de jet de apă prin frecare.

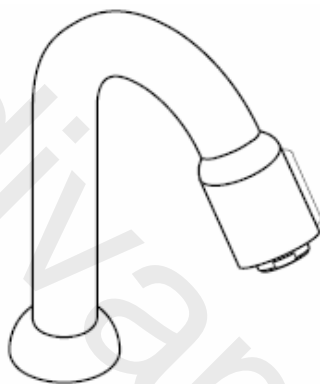


hansgrohe

Hansgrohe · Postfach 1145 · D-77761 Schiltach · Telefon +49 (0) 78 36/51-1282 · Telefax +49 (0) 7836/511440
E-Mail: info@hansgrohe.com · Internet: www.hansgrohe.com

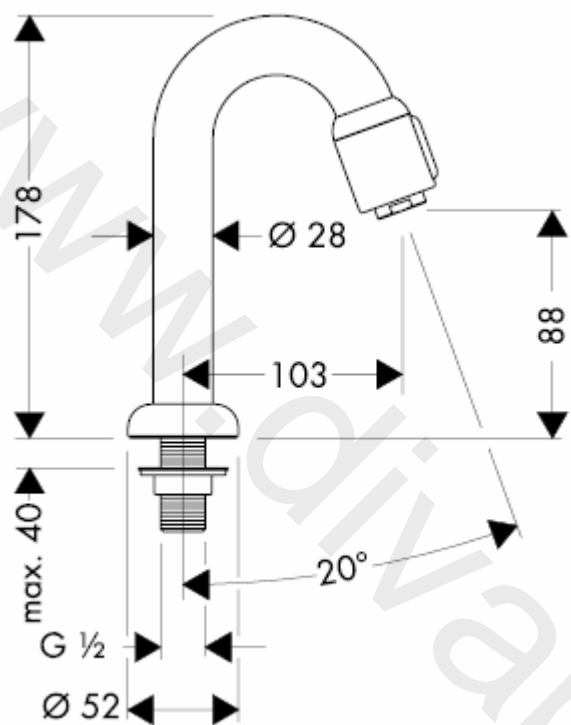
11/2009
9.0771.03
România

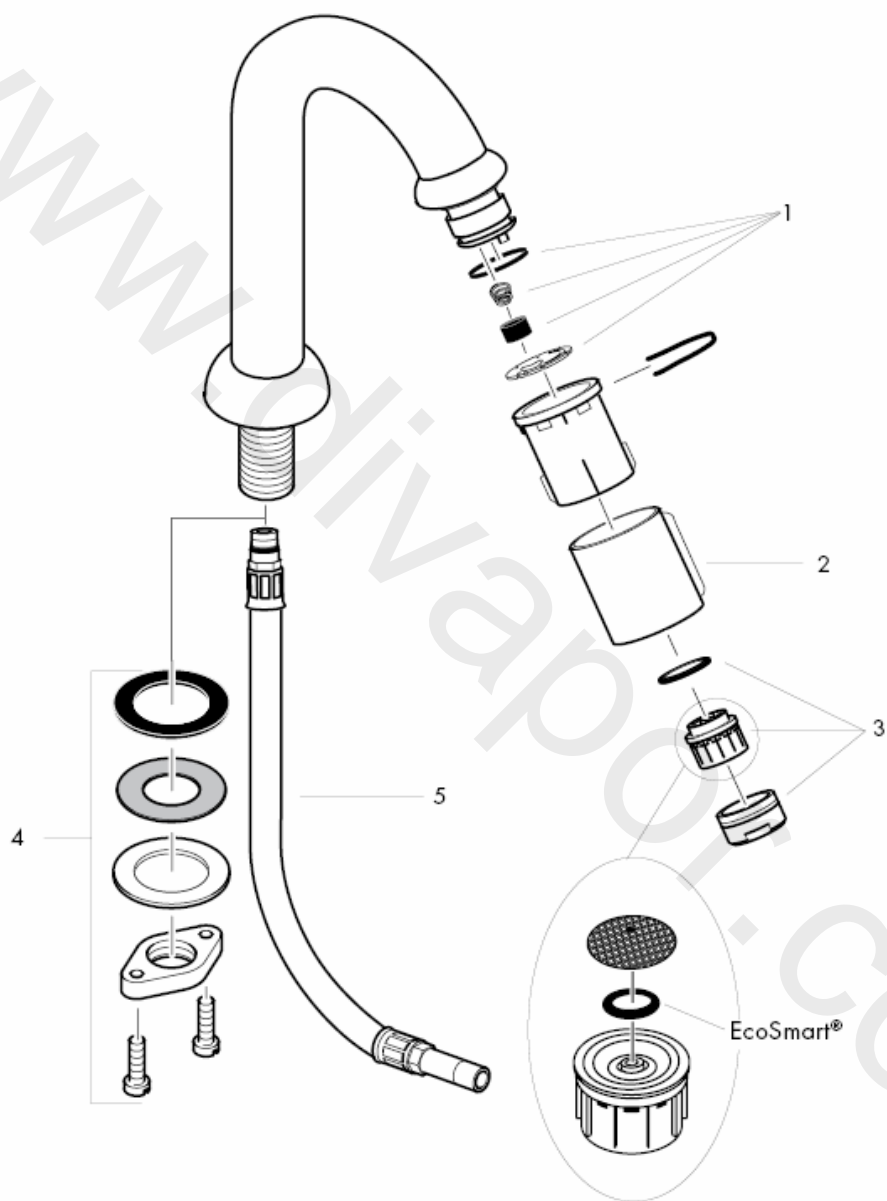
Οδηγία συναρμολόγησης



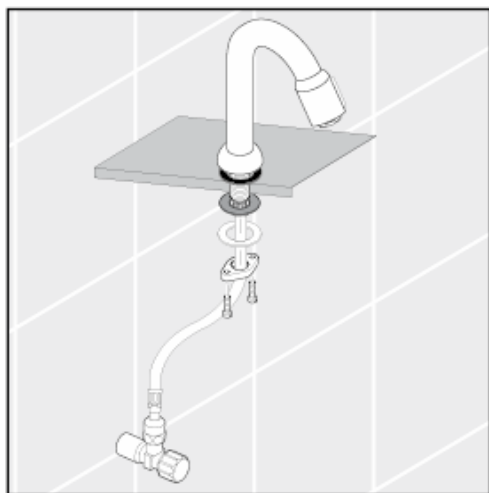
13130XXX

hansgrohe

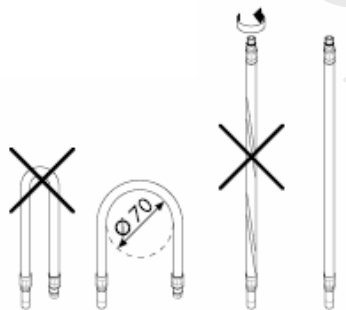




Πλένετε καλά τις σωληνώσεις σύνδεσης.



Συναρμολόγηση σωλήνα
σύνδεσης



Τεχνικά Χαρακτηριστικά

Μπαταρία μόνιμα εξοπλισμένη με EcoSmart®
(μειωτής ροής)

Κατανάλωση νερού με ελαχιστοποιητή νερού:
5 l/min 0,3 MPa

Κατανάλωση νερού χωρίς ελαχιστοποιητή νερού:
11 l/min 0,3 MPa

Λειτουργία πίεσης: max. 1 MPa

Συνιστώμενη λειτουργία πίεσης: 0,1 – 0,5 MPa

Πίεση ελέγχου: 1,6 MPa

(1 MPa = 10 bar = 147 PSI)

Θερμοκρασία ζεστού νερού: max. 80° C

Συνιστώμενη θερμοκρασία ζεστού νερού: 65° C

Ανταλλακτικά βλ. Σελίδα 3

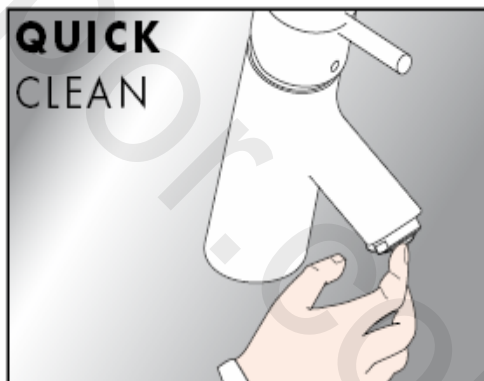
1	Σετ σέρβις	94156000
2	Χιτώνας για βαλβίδα κάνουλας	94061XXX
3	Φίλτρο, πλήρες	13185000
4	Σταθεροποίηση κορμού, πλήρης	94702000
5	Εύκαμπτος σωλήνας παροχής	94071000

XXX = Χρώματα

000 Επιχρωμιωμένο

800 οπτική ανοξειδωτου χάλυβα

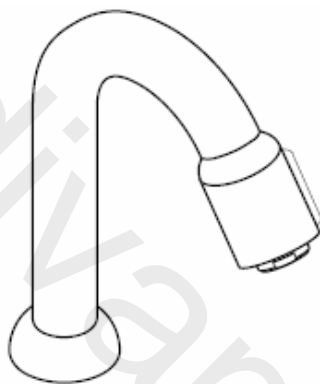
Με QuickClean, τη λειτουργία καθαρισμού με το χέρι, μπορούν να απομακρυνθούν με απλό τρίψιμο τα άλατα από τα κανάλια του καταιονιστήρα.



hansgrohe

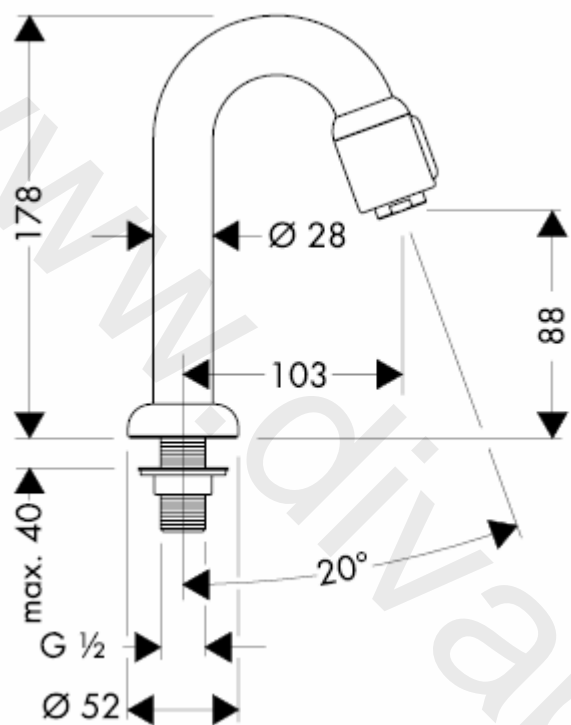
Hansgrohe · Postfach 1145 · D-77761 Schiltach · Telefon +49 (0) 78 36/51-1282 · Telefax +49 (0) 7836/511440
E-Mail: info@hansgrohe.com · Internet: www.hansgrohe.com

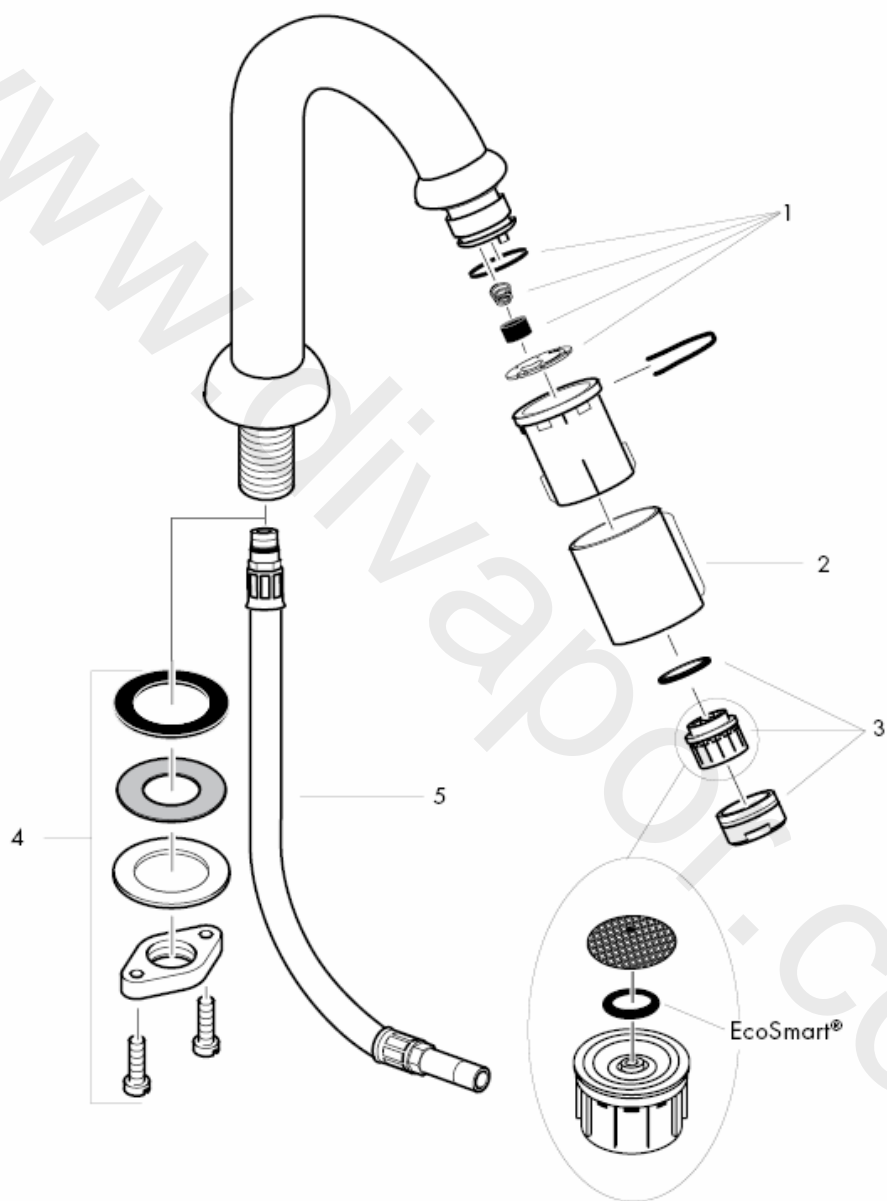
11/2009
9.0771.03
Ελληνικά



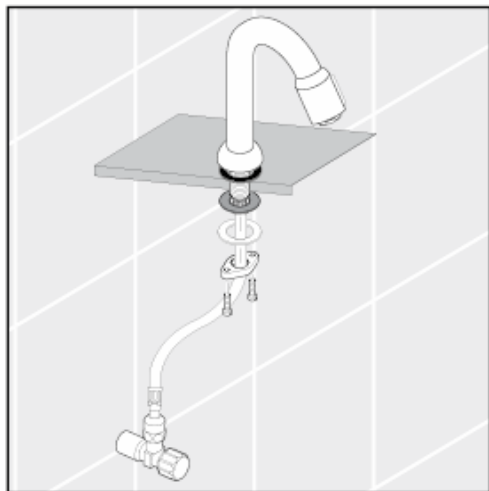
13130XXX

hansgrohe

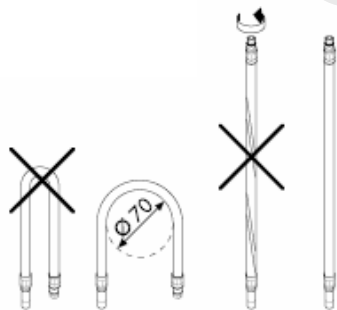




قم بدفع المياه خلال مواسير التغذية.



تجميع خرطوم التوصيل



المواصفات الفنية

يتم بشكل قياسي إنتاج الخلاط هذا مع EcoSmart® (محدد تدفق المياه)

معدل تدفق المياه باستخدام محدد التدفق:

5 l/min 0,3 MPa

معدل تدفق المياه بدون استخدام محدد التدفق:

11 l/min 0,3 MPa

max. 1 MPa

ضغط التشغيل:

0,1 – 0,5 MPa

ضغط التشغيل الموصى به:

1,6 MPa

ضغط الاختبار:

(1 ميجاباسكال = 10 بار = 147 PSI)

max.80° C

درجة حرارة الماء الساخن:

65° C

درجة الحرارة الموصى بها للماء الساخن:

قطع الغيار راجع صفحة 3

94156000

1 طقم الصيانة

94061XXX

2 غطاء لمصام الإغلاق

13185000

3 تجهيزة تهوية

94702000

4 طقم التثبيت

94071000

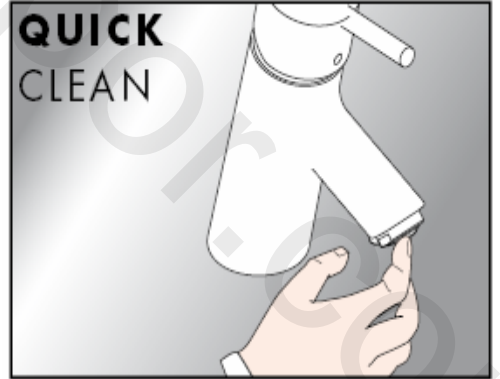
5 خرطوم التوصيل

XXX الألوان =

000كروم

800مظهر الإستليس ستيل

وباستخدام برنامج التنظيف "QuickClean" الذي يتميز بخاصية التنظيف الآلي، يمكن تنظيف وحدات دفع المياه من الجير عن طريق حكها برفق.

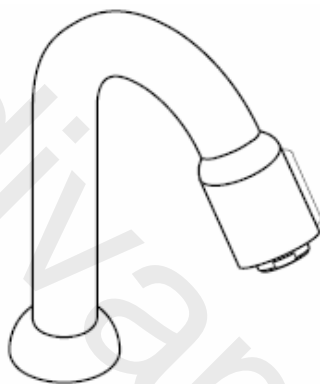


hansgrohe

Hansgrohe · Postfach 1145 · D-77761 Schiltach · Telefon +49 (0) 78 36/51-1282 · Telefax +49 (0) 7836/511440
E-Mail: info@hansgrohe.com · Internet: www.hansgrohe.com

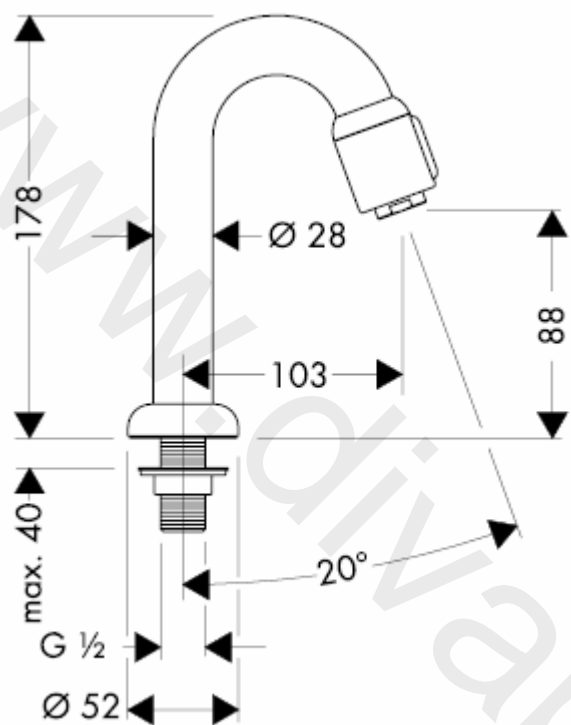
11/2009
9.0771.03

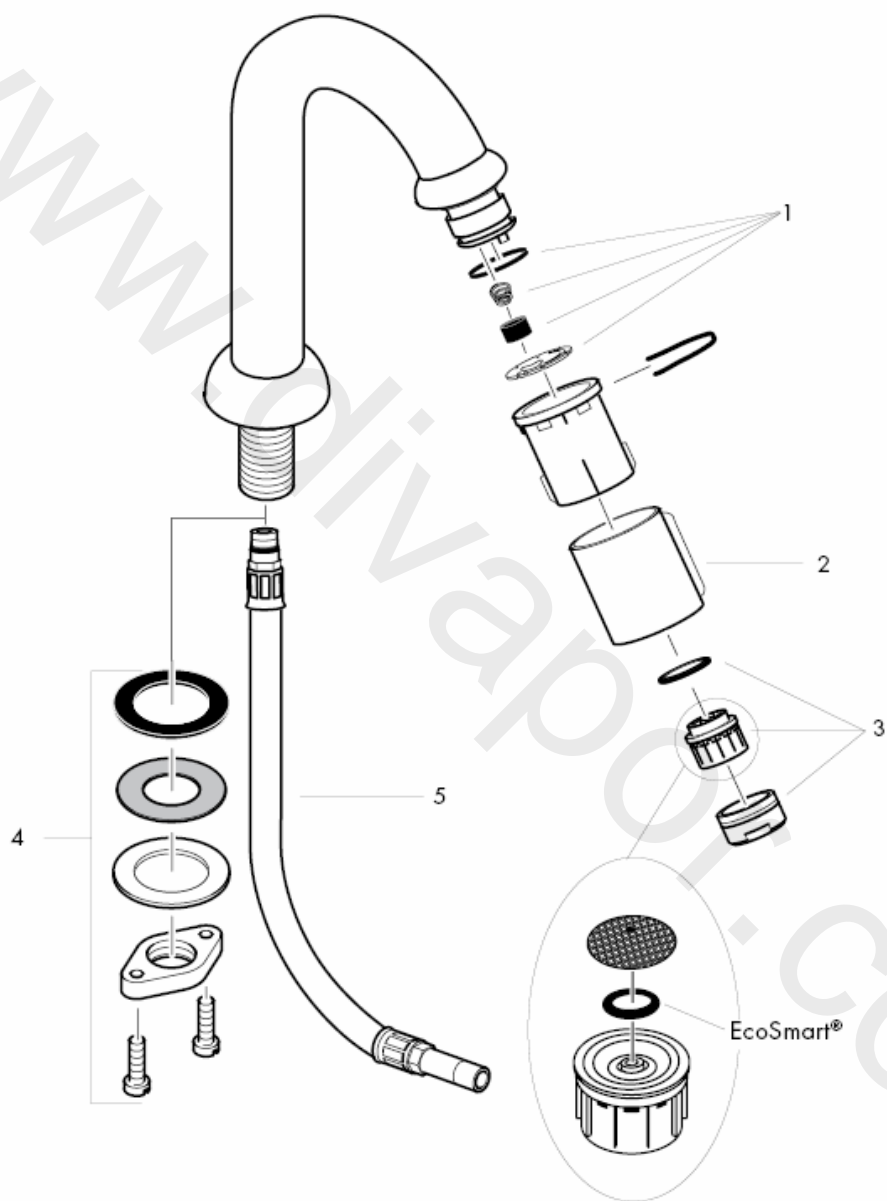
Navodila za montažo



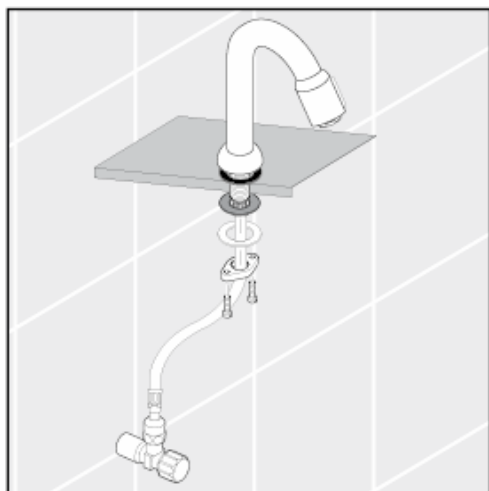
13130XXX

hansgrohe

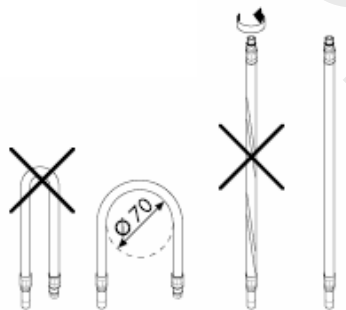




Strokovno izplaknite dovodne cevi.



Montaža priključne gibke cevi



Tehnični podatki

Robinetterie équipée en série d'un EcoSmart®
(limiteur de débit)

Pretok vode z EcoSmartjem (omejevalnikom
pretoka):

5 l/min 0,3 MPa

Pretok vode brez EcoSmartja (omejevalnika
pretoka)

11 l/min 0,3 MPa

Delovni tlak: max. 1 MPa

Priporočeni delovni tlak: 0,1 – 0,5 MPa

Preskusni tlak: 1,6 MPa

(1 MPa = 10 bar = 147 PSI)

Temperatura tople vode: max. 80° C

Priporočena temperatura tople vode: 65° C

Rezervni deli glejte stran 3

1	Servisni komplet	94156000
2	Pokrov za zaporni ventil	94061XXX
3	Perlator kpl.	13185000
4	Pritrdilni komplet	94702000
5	Priključna gibka cev	94071000

XXX = Barve

000 krom

800 videz legiranega jekla

Z QuickClean, ročno čistilno funkcijo, lahko s
šob očistimo vodni kamen tako, da šobe
enostavno podrgnemo.

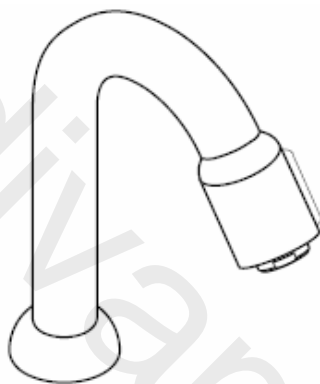


hansgrohe

Hansgrohe · Postfach 1145 · D-77761 Schiltach · Telefon +49 (0) 78 36/51-1282 · Telefax +49 (0) 7836/511440
E-Mail: info@hansgrohe.com · Internet: www.hansgrohe.com

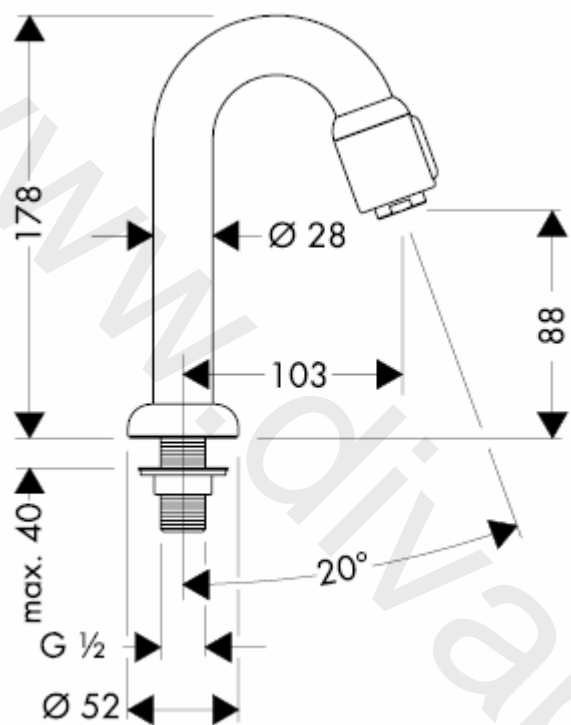
11/2009
9.0771.03
Slovenski

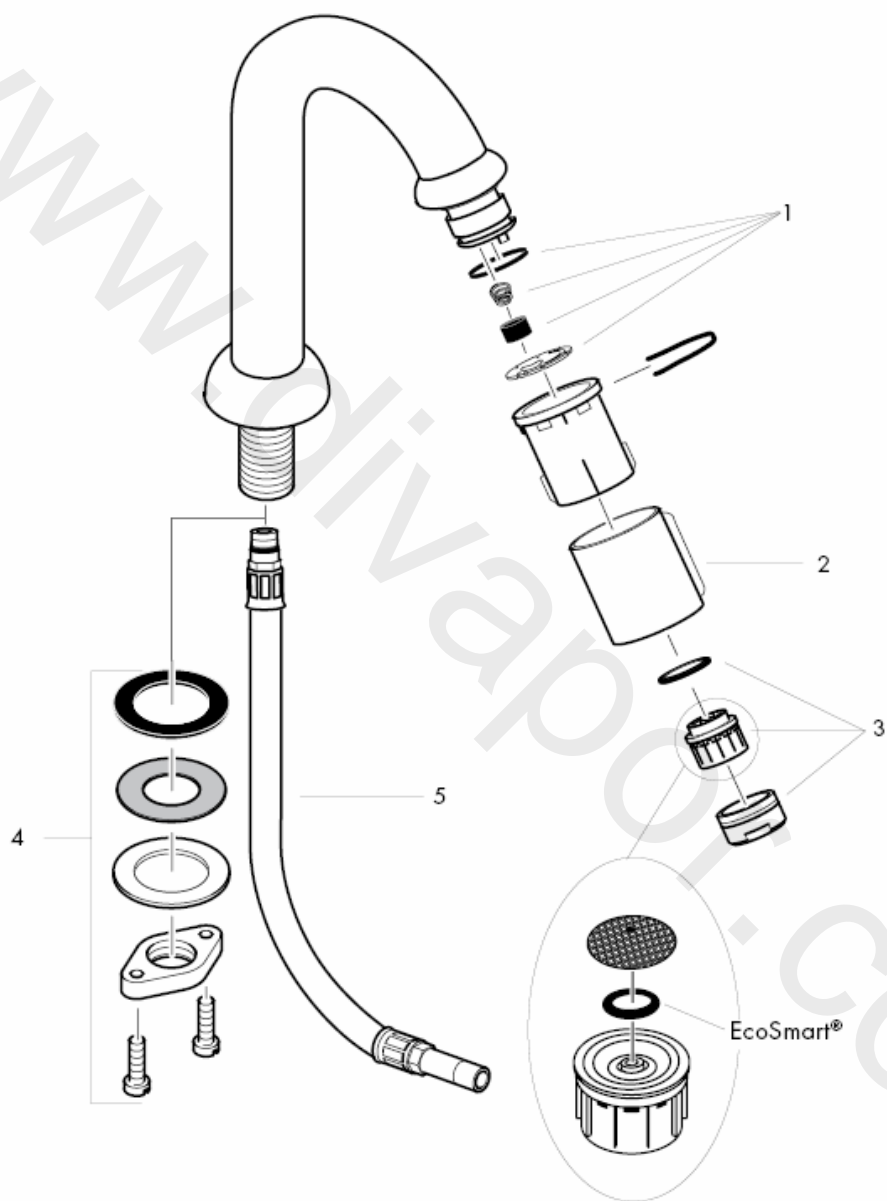
Paigaldusjuhend



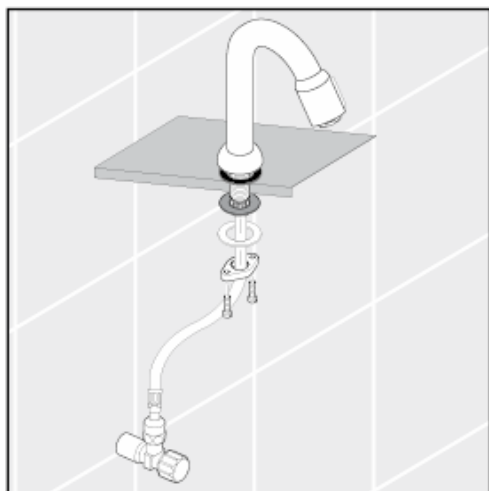
13130XXX

hansgrohe

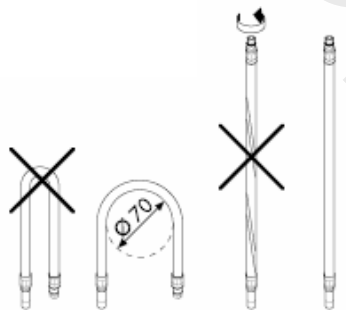




Peske etteandeturud läbi.



Ühendusvooliku paigaldamine



Tehnilised andmed

Segistisari on toodetud koos EcoSmart®

(veehulgapiirajaga)

Läbivool EcoSmart'i korral:

5 l/min 0,3 MPa

Läbivool ilma EcoSmart'ita:

11 l/min 0,3 MPa

Töörõhk max. 1 MPa

Soovitav töörõhk: 0,1 – 0,5 MPa

Kontrollsurve: 1,6 MPa

(1 MPa = 10 baari = 147 PSI)

Kuuma vee temperatuur: max. 80° C

Soovitav kuuma vee temperatuur: 65° C

Varuosad vt lk 3

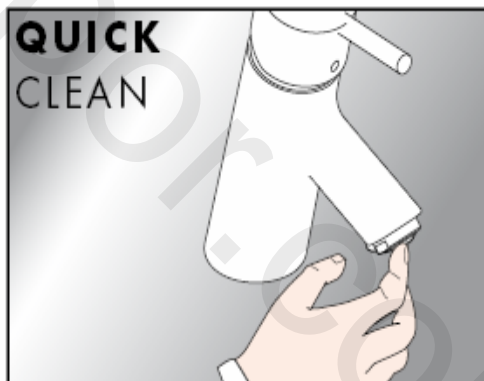
1	hoolduskomplekt	94156000
2	kinni-lahti lüliti kate	94061XXX
3	õhustaja kpl	13185000
4	kinnituskomplekt	94702000
5	ühendusvoolik	94071000

XXX = Värvikood

000 kroom

800 roostevaba optik

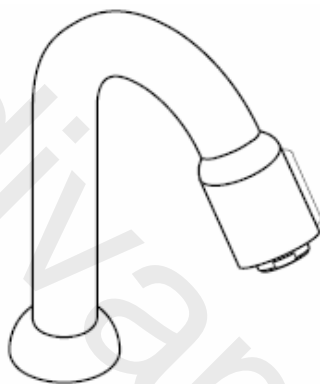
Käsitsi puhastamise funktsiooni QuickClean puhul on vajalik vaid kerge ülehõõrumine, eemaldamaks dušikanalitest katlakivi.



hansgrohe

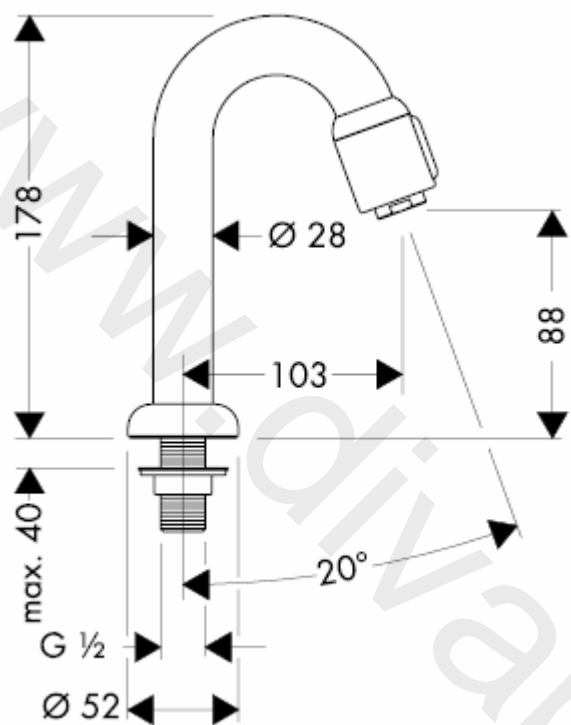
Hansgrohe · Postfach 1145 · D-77761 Schiltach · Telefon +49 (0) 78 36/51-1282 · Telefax +49 (0) 7836/511440
E-Mail: info@hansgrohe.com · Internet: www.hansgrohe.com

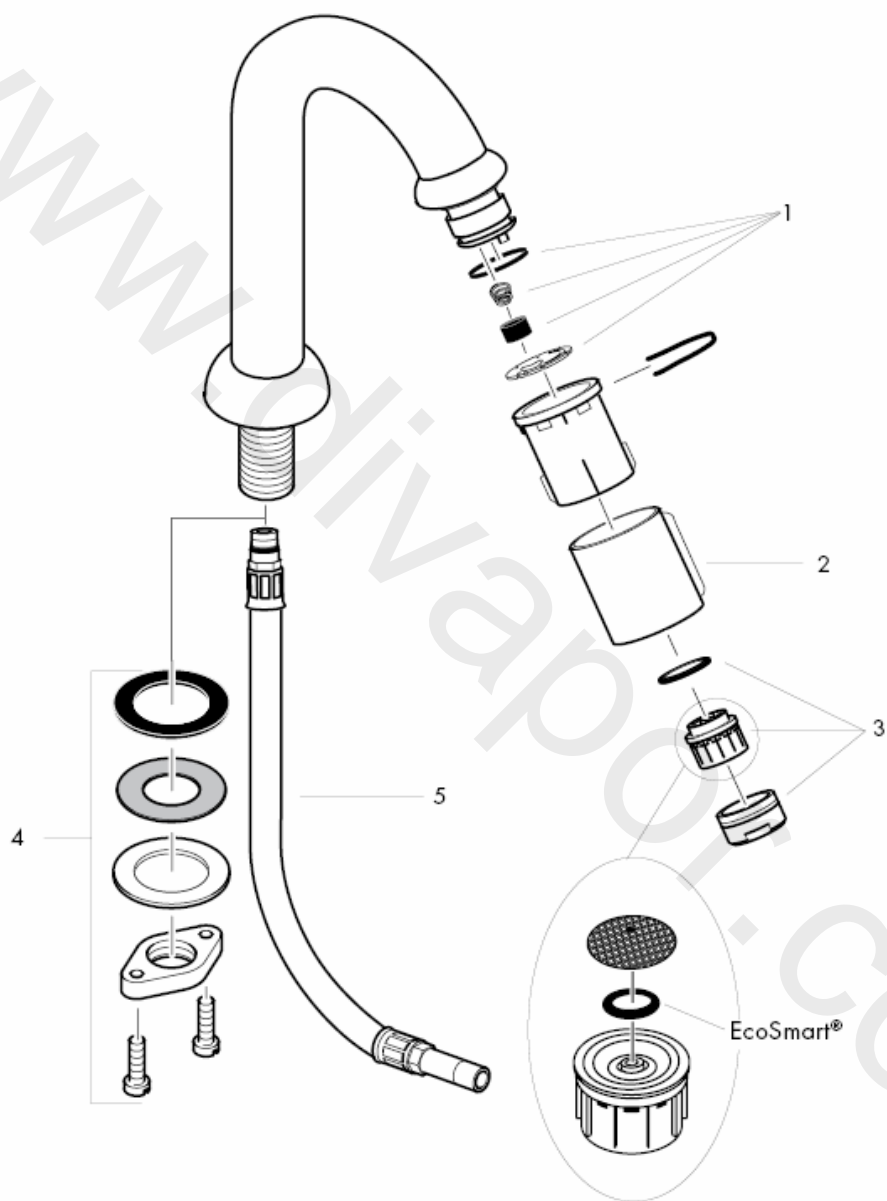
Montāžas instrukcija



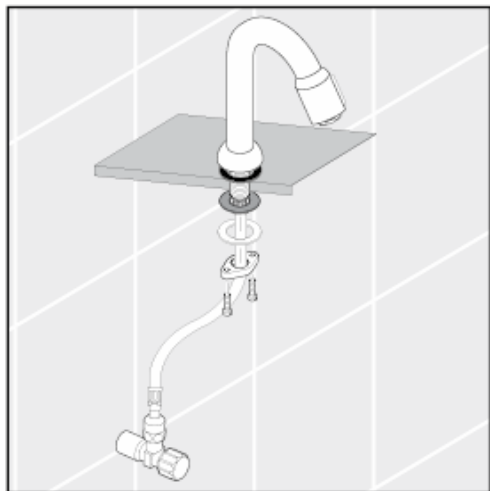
13130XXX

hansgrohe

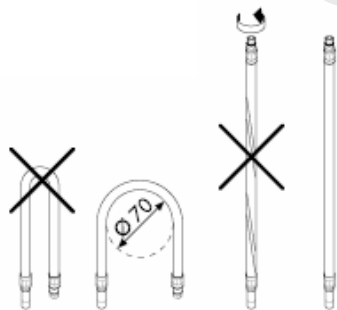




Atbilstoši izskatot pievadus.



Pieslēguma šūtenes montāža



Tehniskie dati

Jaucējkrāns tiek ražots kopā ar EcoSmart®
(caurteces ierobežotāju)

Caurteces intensitāte ar EcoSmart:
5 l/min 0,3 MPa

Caurteces intensitāte bez EcoSmart:
11 l/min 0,3 MPa

Darba spiediens: max. 1 MPa

Ieteicamais darba spiediens: 0,1 – 0,5 MPa

Pārbaudes spiediens: 1,6 MPa

(1 MPa = 10 bar = 147 PSI)

Karstā ūdens temperatūra: max. 80° C

Ieteicamā karstā ūdens temperatūra: 65° C

Rezerves daļas skat. lpp. 3

1	Apkopes komplekts	94156000
2	Apvāks slēgvārstam	94061XXX
3	Aeratora kompl.	13185000
4	Stiprinājuma elementu kompl.	94702000
5	Pieslēguma šjūtene	94071000

XXX = Krāsas

000 hroma

800 tērauda

QuickClean attīrīšanas funkcija - strūklas
kanāliņi vienkāršas manuālas berzes rezultātā
tiek attīrīti no kaļķa.

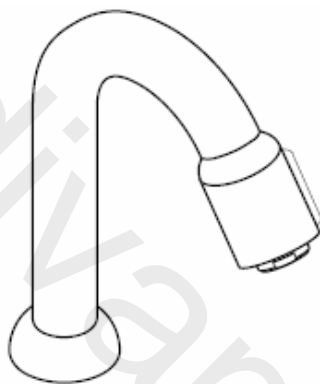


hansgrohe

Hansgrohe · Postfach 1145 · D-77761 Schiltach · Telefon +49 (0) 78 36/51-1282 · Telefax +49 (0) 7836/511440
E-Mail: info@hansgrohe.com · Internet: www.hansgrohe.com

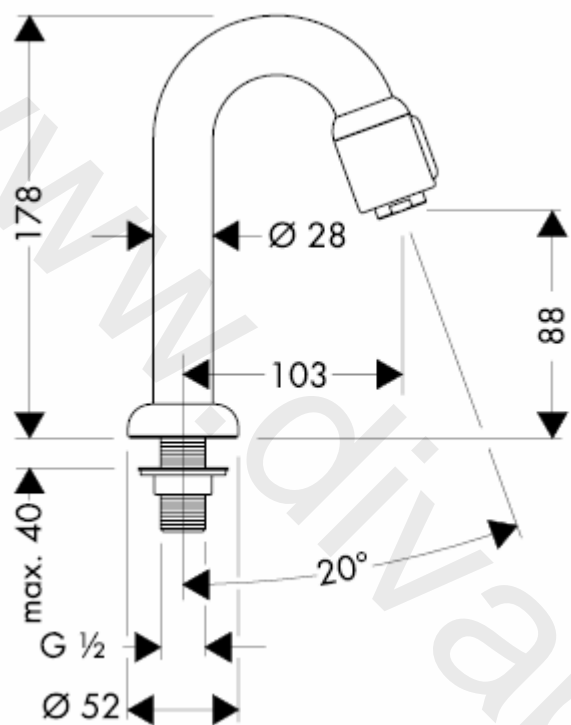
11/2009
9.0771.03
Latviski

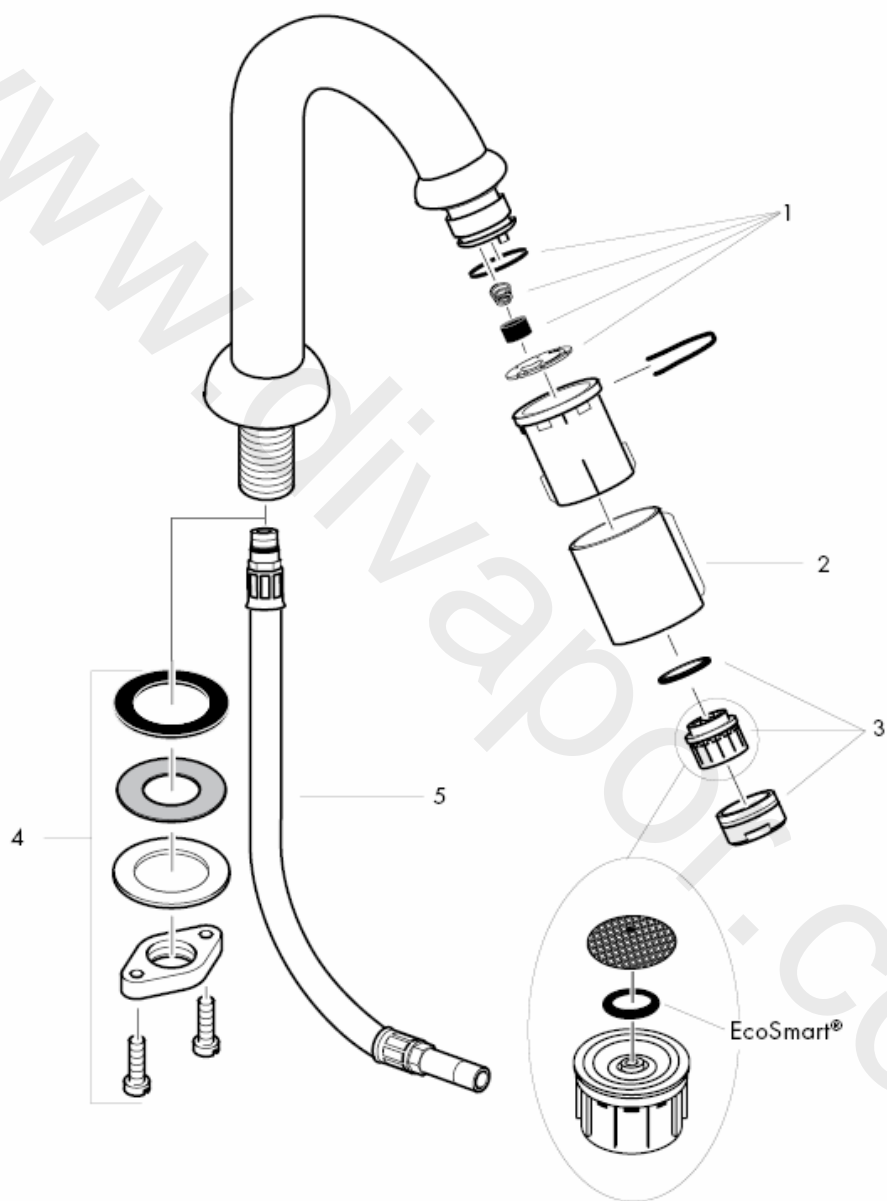
Uputstvo za montažu



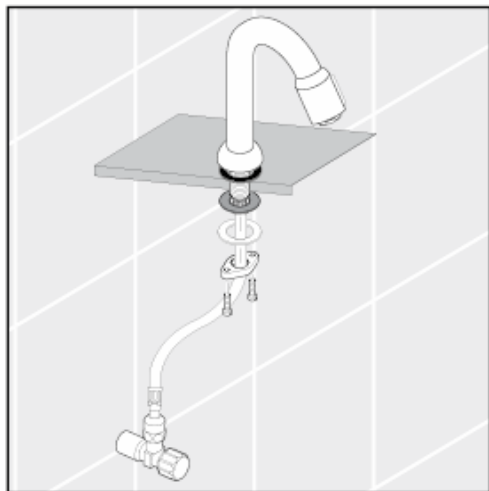
13130XXX

hansgrohe

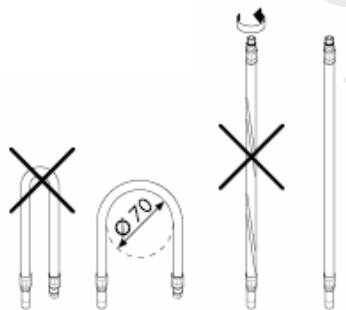




Isperite cevi dovoda.



Montaža priključne cevi



Tehnički podaci

Ove armature imaju serijski ugrađen EcoSmart®
(ograničavač protoka vode)

Protok vode sa EcoSmart-om: 5 l/min 0,3 MPa

Protok vode bez EcoSmart-a: 11 l/min 0,3 MPa

Radni pritisak: max. 1 MPa

Preporučeni radni pritisak: 0,1 – 0,5 MPa

Probni pritisak: 1,6 MPa

(1 MPa = 10 bar = 147 PSI)

Temperatura vruće vode: max. 80° C

Preporučena temperatura vruće vode: 65° C

Rezervni delovi vidi stranu 3

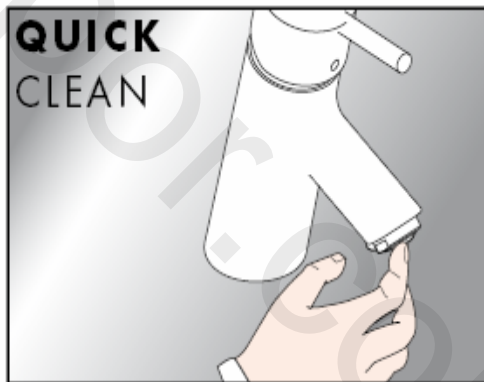
1	Servisni set	94156000
2	Obloga ventila za zatvaranje	94061XXX
3	Aerator kompl.	13185000
4	Kompletna pričvrсна garnitura	94702000
5	Priključno crevo	94071000

XXX = Oznake boja

000 hrom

800 dezen plemeniti čelik

QuickClean - ručni sistem za čišćenje
omogućuje odstranjivanje kamena s rupica
uobičajavača mlaza, jednostavnim trljanjem.

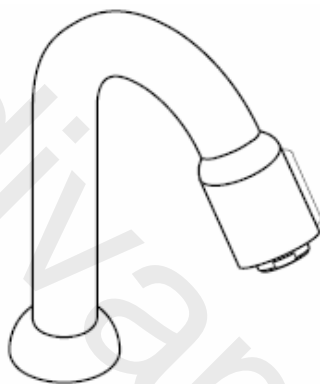


hansgrohe

Hansgrohe · Postfach 1145 · D-77761 Schiltach · Telefon +49 (0) 78 36/51-1282 · Telefax +49 (0) 7836/511440
E-Mail: info@hansgrohe.com · Internet: www.hansgrohe.com

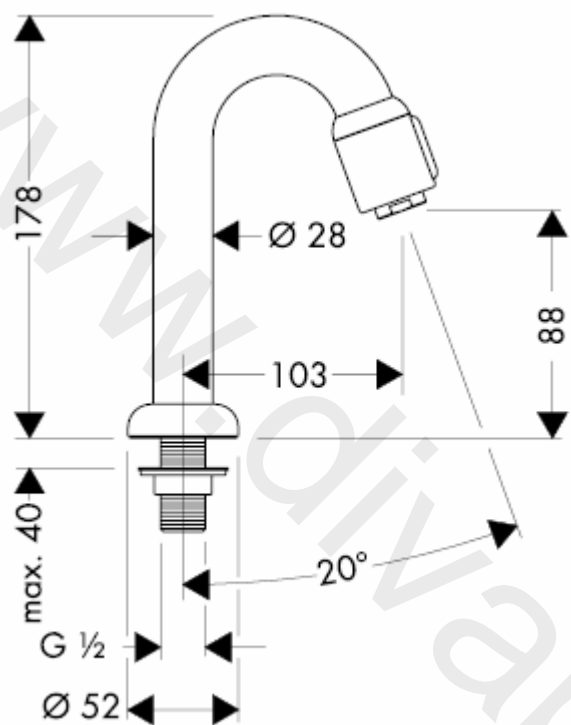
11/2009
9.0771.03
Srpski

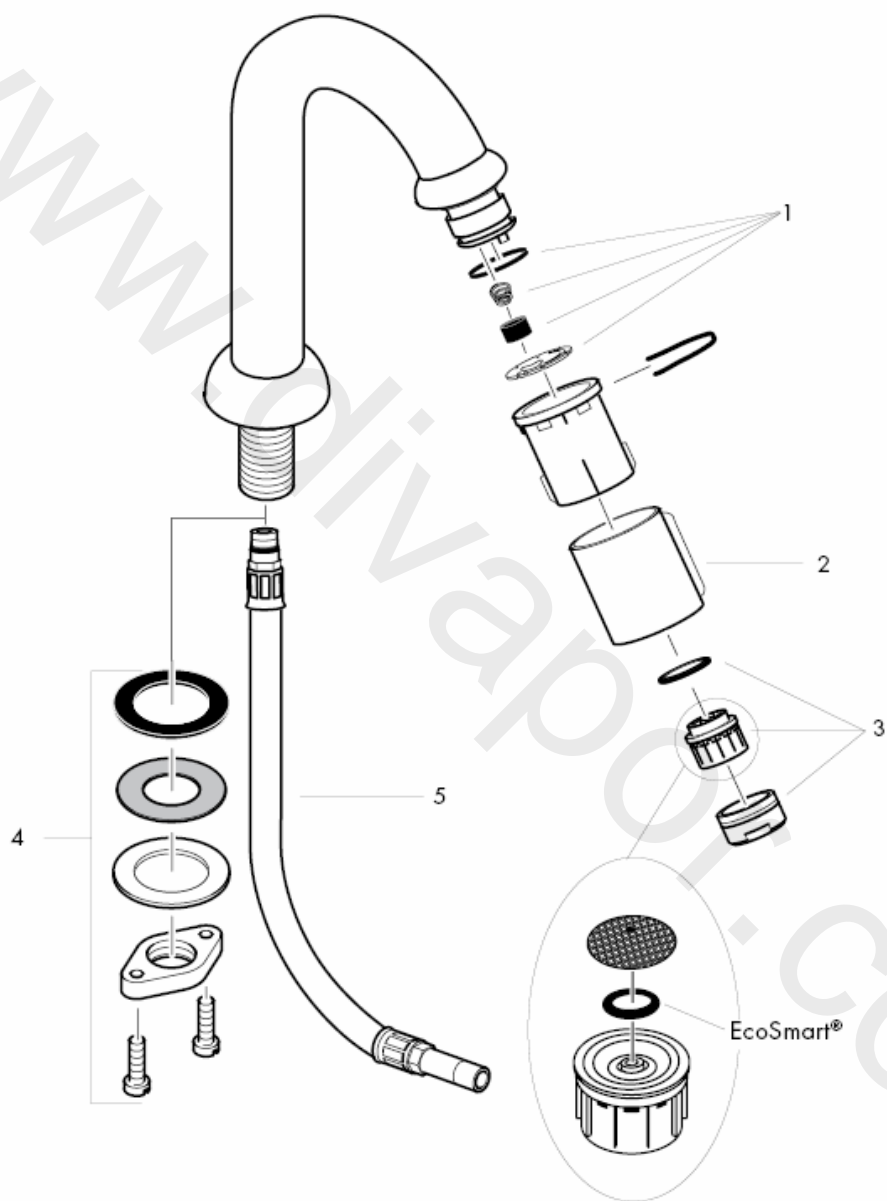
Montasjeveiledning



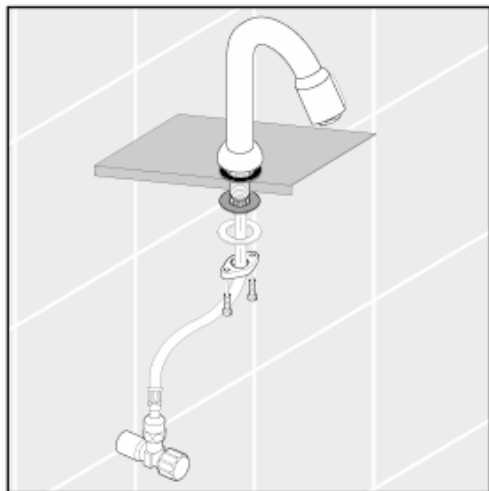
13130XXX

hansgrohe

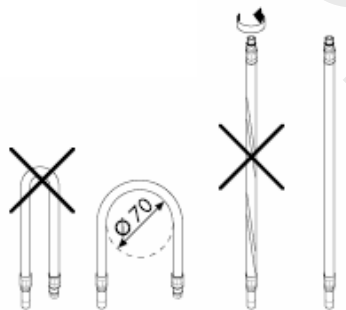




Forsyningsledninger spyles faglig korrekt.



Montasje tilkoblingslange



Tekniske data

Armatør er standardmessig utstyrt med EcoSmart® (gjennomstrømningsbegrenser)
Gjennomstrømningsytelse med EcoSmart: 5 l/min 0,3 MPa
Gjennomstrømningsytelse uten EcoSmart: 11 l/min 0,3 MPa
Driftstrykk max. 1 MPa
Anbefalt driftstrykk: 0,1 – 0,5 MPa
Prøvetrykk 1,6 MPa
(1 MPa = 10 bar = 147 PSI)
Varmtvannstemperatur max. 80° C
Anbefalt temperatur for varmt vann 65° C

Service­deler se side 3

1	Servicesett	94156000
2	Mantel for tappventil	94061XXX
3	Luftsprudler kpl.	13185000
4	Skaftfeste kpl.	94702000
5	Tilkoblings­slange	94071000

XXX = Oznake boja

000 hrom
800 dezen plemeniti čelik

Med QuickClean, den manuelle rengjøringsfunksjonen, kan stråleformere renses for kalk ved hjelp av enkel gnikking.

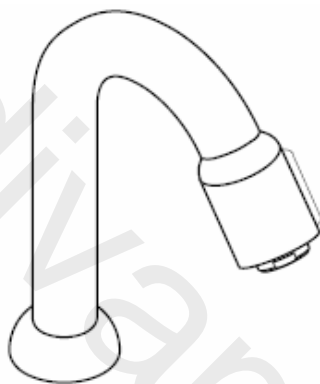


hansgrohe

Hansgrohe · Postfach 1145 · D-77761 Schiltach · Telefon +49 (0) 78 36/51-1282 · Telefax +49 (0) 7836/511440
E-Mail: info@hansgrohe.com · Internet: www.hansgrohe.com

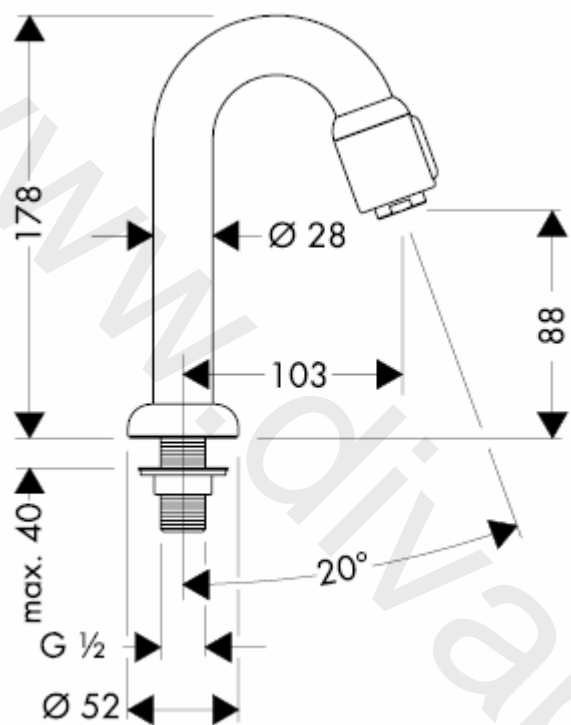
11/2009
9.0771.03
Norsk

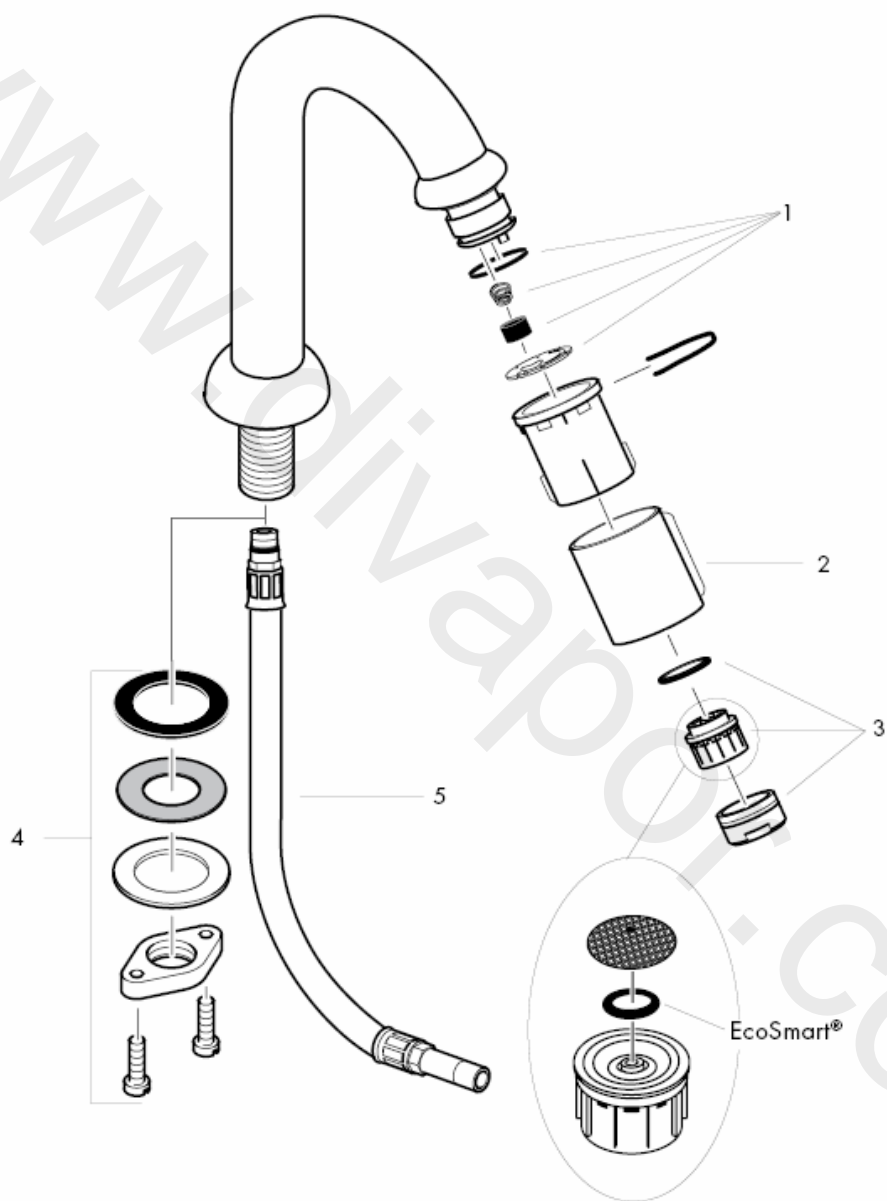
Ръководство за монтаж



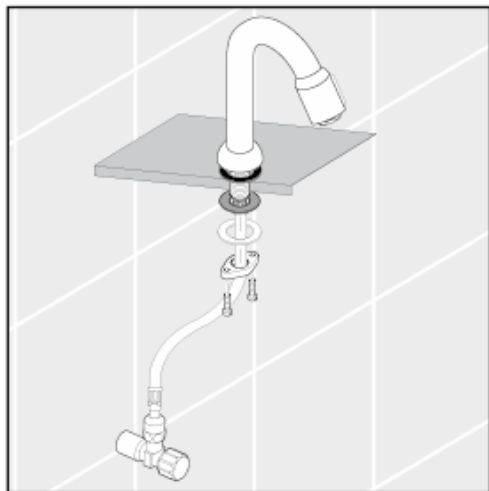
13130XXX

hansgrohe

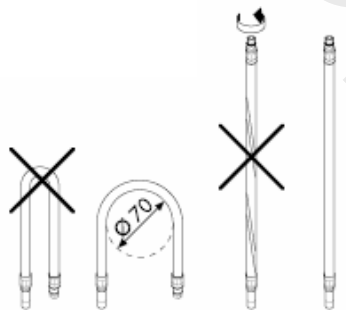




Промийте захранващите тръбопроводи
съобразно изискванията.



Монтаж на свързващия
маркуч



Технически данни

Арматурата е оборудвана серийно с EcoSmart® (ограничител на протичане)
Мощност на потока с EcoSmart (ограничител на протичане):
5 l/min 0,3 MPa
Мощност на потока без EcoSmart (ограничител на протичане):
11 l/min 0,3 MPa
Работно налягане: max. 1 MPa
Препоръчително работно налягане: 0,1 – 0,5 MPa
Контролно налягане: 1,6 MPa
(1 МПа = 10 bar = 147 PSI)
Температура на горещата вода: max. 80° C
Препоръчителна температура на горещата вода: 65° C

Сервизни части вижте стр. 3

1	Сервизен набор	94156000
2	Обвивка на клапана за източване	94061XXX
3	Аератор компл.	13185000
4	Закрепване на шийките компл.	94702000
5	Свързващ маркуч	94071000

XXX = Označe boja

000 hrom
800 dezin plemeniti čelik

С QuickClean, ръчната функция за почистване, приспособленията за оформяне на струята могат да се почистват от варовика с просто разтъркване.

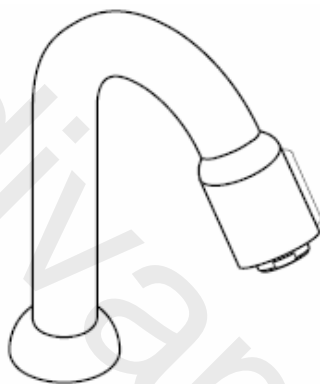


hansgrohe

Hansgrohe · Postfach 1145 · D-77761 Schiltach · Telefon +49 (0) 78 36/51-1282 · Telefax +49 (0) 7836/511440
E-Mail: info@hansgrohe.com · Internet: www.hansgrohe.com

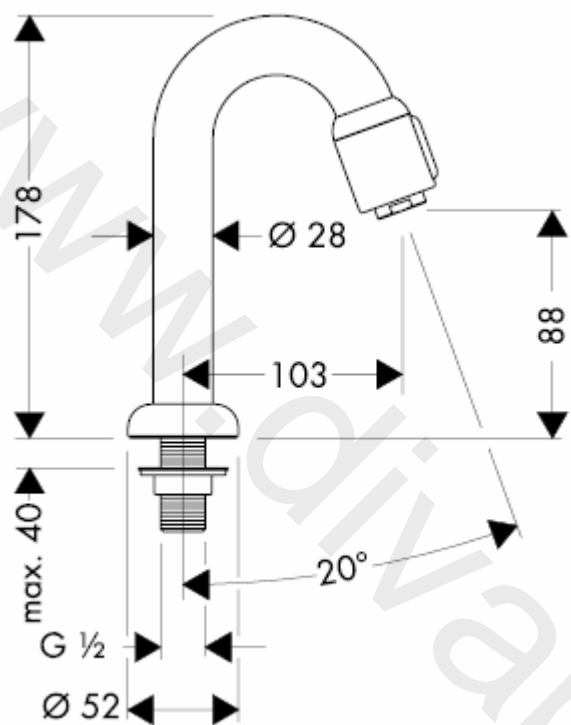
11/2009
9.0771.03
БЪЛГАРСКИ

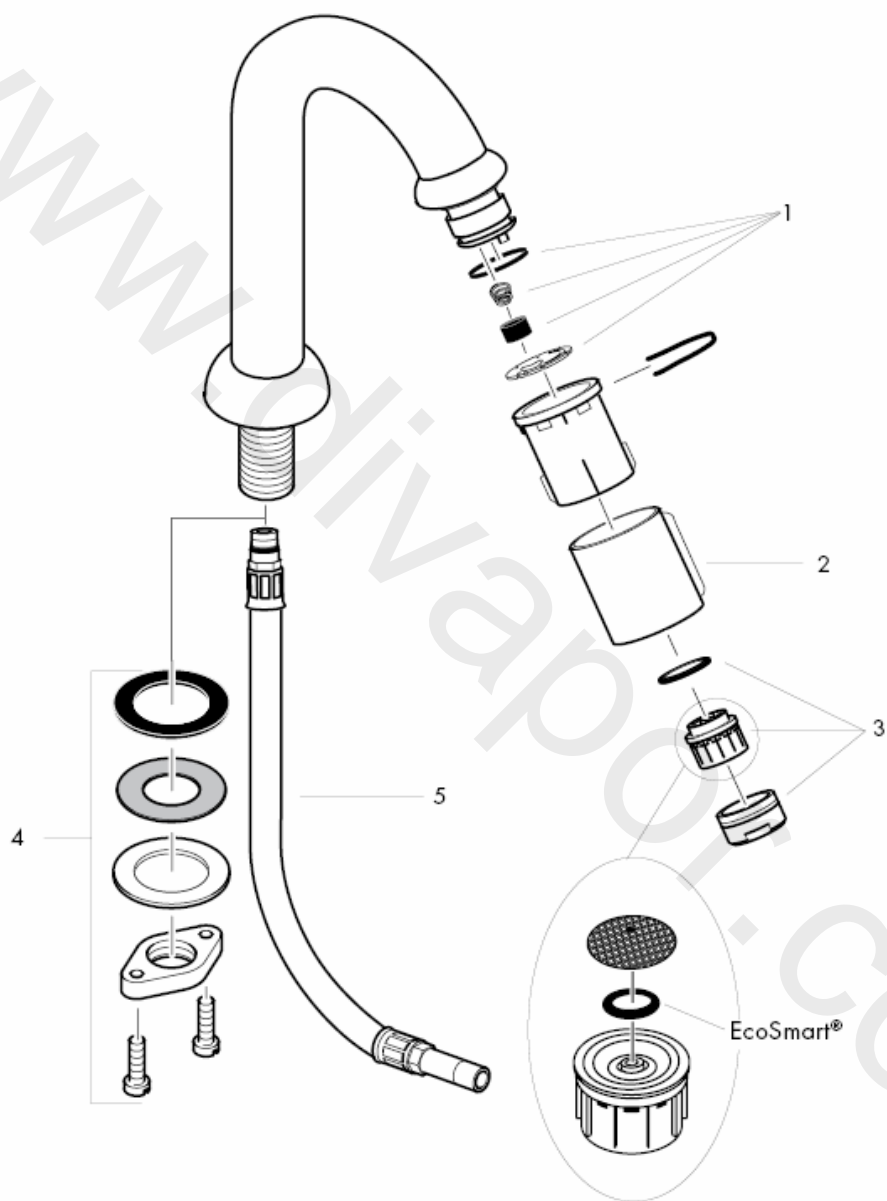
Udhëzime rreth montimit



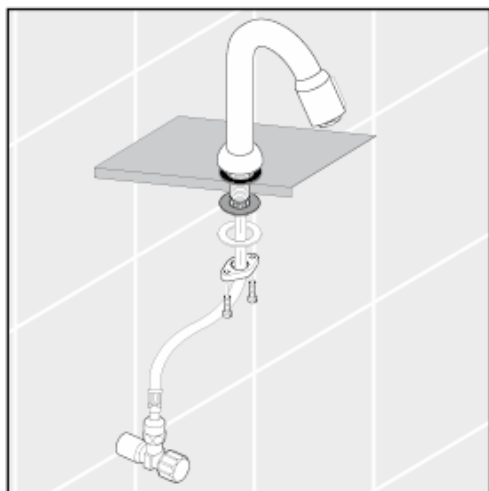
13130XXX

hansgrohe

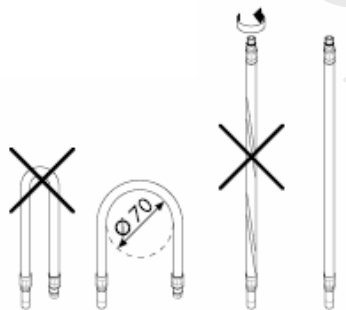




Shpërlani në mënyrë profesionale lidhjet.



Montimi i zorrës së lidhjes



Të dhëna teknike

Rubineti është i pajisur si standard me

EcoSmart® (Kufizues qarkullimi)

Kapaciteti i rrjedhjes me EcoSmart:

5 l/min 0,3 MPa

Kapaciteti i rrjedhjes pa EcoSmart:

11 l/min 0,3 MPa

Presioni gjatë punës max. 1 MPa

Presioni i rekomanduar: 0,1 – 0,5 MPa

Presioni për provë: 1,6 MPa

(1 MPa = 10 bar = 147 PSI)

Temperatura e ujit të ngrohtë max.80° C

Temperatura e rekomanduar e ujit të ngrohtë:65°

C

Pjesët e servisit shih faqen 3

1	Kompleti i servisit	94156000
2	Veshje për valvulin e daljes së ujit	94061XXX
3	Perlator komplet	13185000
4	Montimi i boshtit komplet	94702000
5	Zorra e lidhjes	94071000

XXX = Oznake boja

000 hrom

800 dezen plemeniti çelik

Me QuickClean, funksionin manual të pastrimit mund të hiqen mbetjet gëlqerore me fërkim të thjeshtë nga formuesit e currilit.



hansgrohe

Hansgrohe · Postfach 1145 · D-77761 Schiltach · Telefon +49 (0) 78 36/51-1282 · Telefax +49 (0) 7836/511440
E-Mail: info@hansgrohe.com · Internet: www.hansgrohe.com

11/2009
9.0771.03
Shqip