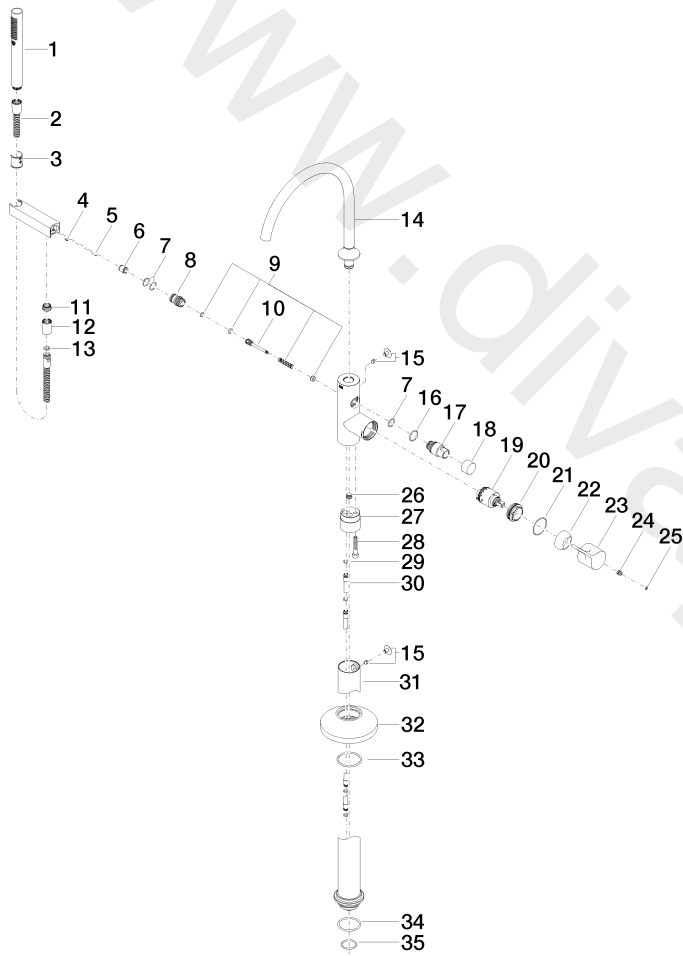




Bath - VAIA

Single-lever bath mixer with stand pipe for free-standing assembly with hand shower set - Brushed

Article number: 25 863 809-06



## Bath - VAIA

Single-lever bath mixer with stand pipe for free-standing assembly with hand shower set - Brushed

Article number: 25 863 809-06

### Spare parts list

| Position | Quantity used | Item Number        | Spare part   | Delivery time         |
|----------|---------------|--------------------|--|-----------------------|
| 1        | 1             | 90 12 11 140 30-06 | shower   | 10                    |
| 2        | 1             | 90 30 02 072 00-06 | Metal shower hose 1/2" x 3/8" x 1250 mm - Brushed Platinum | 10                    |
| 3        | 1             | 09 18 40 118 90    | sleeve   | 2                     |
| 4        | 1             | 09 31 11 058 90    | pin  | 2                     |
| 5        | 1             | 09 31 11 040 90    | pin  | 2                     |
| 6        | 1             | 09 23 01 141 90    | back-flow preventer  | 2                     |
| 7        | 3             | 09 14 10 010 90    | seal   | 2                     |
| 8        | 1             | 09 24 03 153 20-06 | nipple   | 60                    |
| 9        | 1             | 90 16 02 023 00 90 | spring   | 2                     |
| 10       | 1             | 09 31 09 102 20-06 | pull-rod   | Not available anymore |
| 11       | 1             | 09 24 03 069 90    | nipple   | 2                     |
| 12       | 1             | 09 21 02 069-06    | cover  | 10                    |
| 13       | 1             | 09 14 20 026 90    | seal   | 2                     |
| 14       | 1             | 90 28 22 327 00-06 | spout  | 10                    |
| 15       | 2             | 04 31 20 036 00 90 | plug   | 2                     |
| 16       | 1             | 09 14 10 112 90    | seal   | 2                     |
| 17       | 1             | 09 21 34 081 20-06 | nipple   | 10                    |
| 18       | 1             | 09 20 88 002-06    | handle   | 10                    |
| 19       | 1             | 90 15 05 039 00 90 | cartridge  | 2                     |
| 20       | 1             | 09 24 04 298 90    | nut  | 2                     |
| 21       | 1             | 09 14 10 037 90    | seal   | 2                     |
| 22       | 1             | 09 28 30 036-06    | cover  | 10                    |
| 23       | 1             | 09 20 80 022-06    | handle   | 10                    |
| 24       | 1             | 09 31 11 030 90    | pin  | 2                     |
| 25       | 1             | 90 31 20 087 00-06 | plug   | 10                    |
| 26       | 1             | 04 31 20 039 10 90 | plug   | 2                     |
| 27       | 1             | 09 24 03 152 20-06 | adaptor  | Not available anymore |
| 28       | 1             | 09 30 30 111 90    | screw  | 2                     |
| 29       | 2             | 09 14 10 139 90    | seal   | 2                     |
| 30       | 2             | 04 28 22 025 00 90 | connection   | 2                     |
| 31       | 1             | 04 28 22 030 00-06 | pipe   | 10                    |
| 32       | 1             | 09 27 80 022-06    | rosette  | 10                    |
| 33       | 1             | 09 14 10 129 90    | seal   | 2                     |
| 34       | 1             | 09 14 10 084 90    | seal   | 2                     |
| 35       | 1             | 09 14 10 018 90    | seal   | 2                     |