

Metropol

Single lever shower mixer for exposed installation with lever handle

Finish: **Matt White** Article Number: **32560700**



Description

product features

- 1 function
- centre distance: 150 ± 12 mm
- maximum flow rate at 3 bar: 16 l/min
- flow rate of hand shower at 3 bar: 16 l/min
- ceramic cartridge
- temperature limitation adjustable
- non-return valve
- with silencer
- hose connection DN15
- connection dimension: DN15
- min. operating pressure: 1 bar
- max. operating pressure: 10 bar
- connection type: s-shaped connections
- WRAS 2304043
- WRAS 2304043 - Approval letter 2304043

Article Details

Price excl. VAT

437,50 £

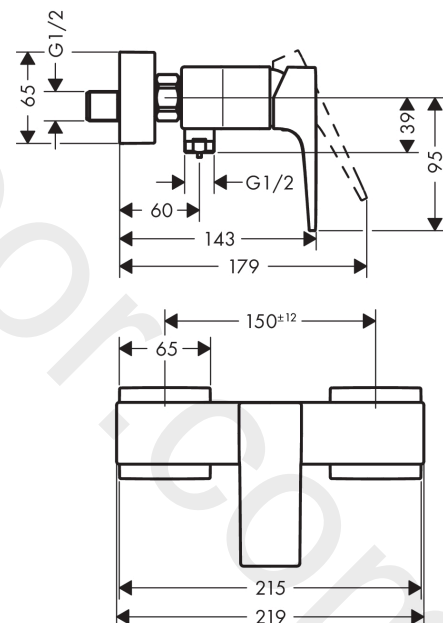
Design awards



Product image



Scale drawing



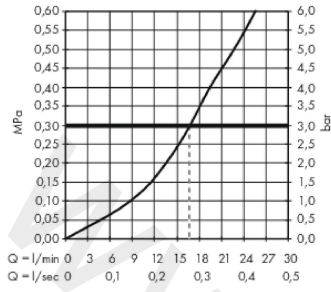
Metropol

Single lever shower mixer for exposed installation with lever handle

Finish: **Matt White** Article Number: **32560700**



Flowchart



www.divapor.com

Metropol

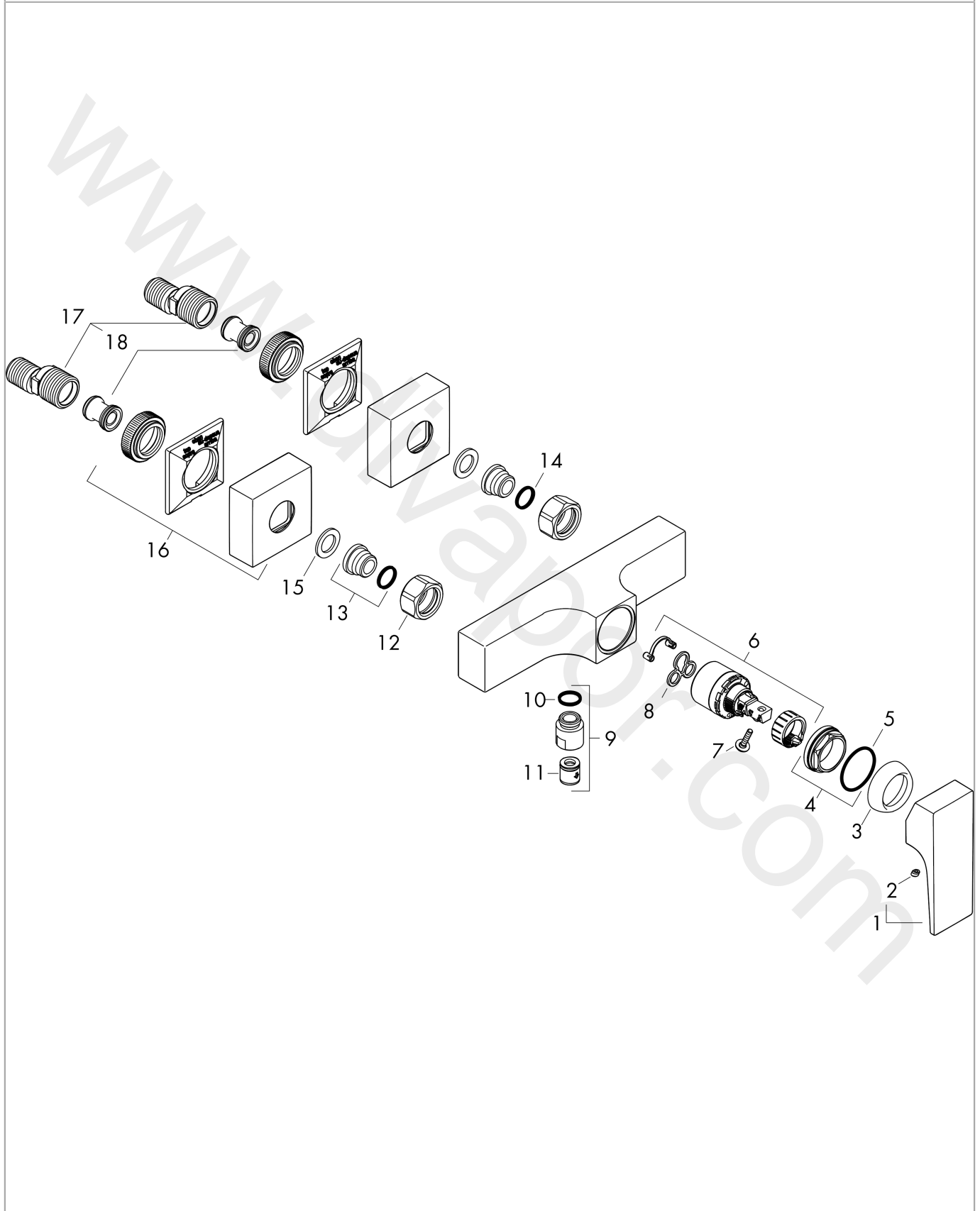
Single lever shower mixer for exposed installation with lever handle

Finish: **Matt White** Article Number: **32560700**



Exploded Drawing

Year of production: >11/19



Metropol**Single lever shower mixer for exposed installation with lever handle**Finish: **Matt White** Article Number: **32560700****Spare part list**

Year of production: >11/19

| Pos. | Description | Article Number | Price | PU |
|------|--------------------------------|----------------|---------|----|
| 1 | handle | 93075700 | £ 96,00 | 1 |
| 2 | screw cover | 96338000 | £ 3,30 | 1 |
| 3 | flange | 97406700 | £ 33,00 | 1 |
| 4 | nut | 97209000 | £ 16,10 | 1 |
| 5 | O-Ring 32x2 | 98193000 | £ 3,30 | 1 |
| 6 | cartridge, assy | 92730000 | £ 35,00 | 1 |
| 7 | locking screw for handle | 95140000 | £ 6,10 | 1 |
| 8 | seal | 95008000 | £ 9,00 | 1 |
| 9 | Hose Connection | 96044700 | £ 38,00 | 1 |
| 10 | O-ring 14x2 | 98129000 | £ 3,30 | 1 |
| 11 | set of non return valves DW 15 | 94074000 | £ 16,10 | 1 |
| 12 | set of nuts | 96157700 | £ 51,00 | 1 |
| 13 | connecting thread | 97220000 | £ 16,10 | 1 |
| 14 | O-ring 15x2 | 98163000 | £ 3,30 | 1 |
| 15 | filter packing | 96922000 | £ 9,00 | 1 |
| 16 | escutcheon | 93077700 | £ 76,00 | 1 |
| 17 | set of S-unions (±12 mm) | 94140000 | £ 51,00 | 1 |
| 18 | noise reduction | 96429000 | £ 6,10 | 1 |