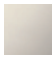

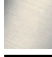





36 608 361

- rosette Ø 55 mm
- head part with cut-to-length spindle and sleeve
- 3x porcelain insert: HOT, COLD and NEUTRAL

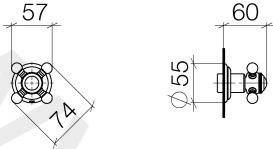


	Platinum	36 608 361-08
	Chrome	36 608 361-00
	Brushed Platinum	36 608 361-06
	Durabass (23kt Gold)	36 608 361-09
	Brushed Durabass (23kt Gold)	36 608 361-28
	Brushed Dark Platinum	36 608 361-99

Required miscellaneous

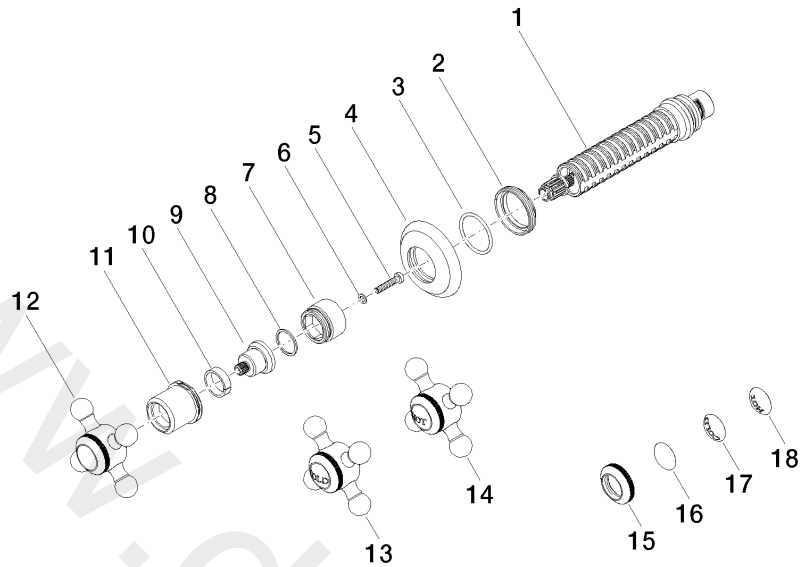


- Wall valve 3/4"** 35 608 970 90
- min. recess depth 75 mm
  - max. recess depth 145 mm



www.divapor.com

36 608 361



Spare parts list

No.	Item Number	Name	Quantity used	Delivery time
1	90 90 03 127 00 90	top	1	2
2	09 23 10 125-00	nut	1	10
3	09 14 10 063 90	seal	1	2
4	09 27 36 102-08	rosette	1	20
5	09 30 30 075 90	screw	1	2
6	09 30 11 194 90	disc	1	2
7	09 18 30 007-08	sleeve	1	60
8	09 28 10 030 90	ring	1	2
9	09 12 12 064-08	base	1	60
10	09 14 15 021 90	ring	1	2
11	09 21 02 161-08	cover	1	20
12	04 20 36 100 02-08	handle	1	20
13	04 20 36 100 00-08	handle ( cold )	1	20
14	04 20 36 100 01-08	handle ( hot )	1	20
15	09 20 36 005-08	handle	1	20
16	09 26 01 016 90	accessories	1	2
17	09 26 01 010 90	accessories	1	2
18	09 26 01 011 90	accessories	1	2