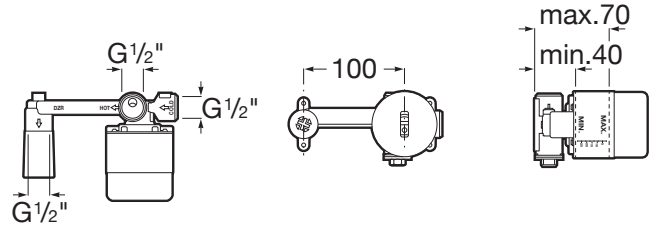


CALA

Built-In Concealed Body Titanium Black



TECHNICAL DRAWINGS



FEATURES

Application: Basin

Installation type: Built-in

Net weight (kg): 0.9

Type of cartridge: Ceramic Disc

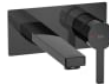
Water connection diameter: 1/2"

COMPATIBLE WITH



Wall-mounted basin mixer  
Required: RocaBox  
A5252206NM

5A353A..0



Wall-mounted basin mixer  
Required: RocaBox  
A5252206RG

5A3596..0



Wall-mounted basin mixer.  
Required: RocaBox  
A5252206NB

5A356E..0

## Cala

The essence of Cala's design is demonstrated in a slim body of only 38mm and its flat rectangular handle, in perfect harmony with the shape of the spout; the ultimate blend of visual elements combined for optimal proportion and style. This comprehensive collection features a range of basin taps, bath shower mixers and bidet options.



INSTALLATION AND USER MANUALS



[Installation manual](#)