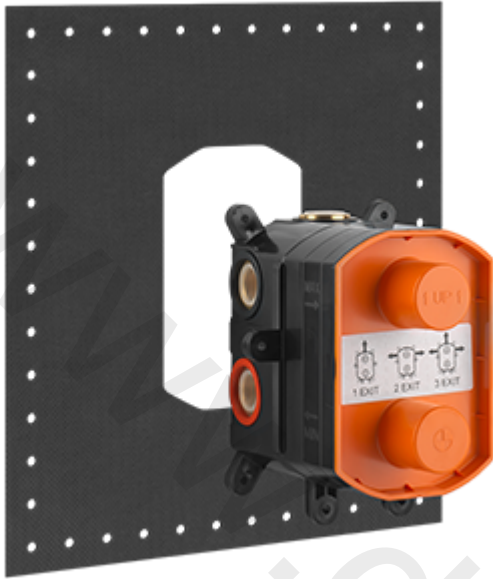


09269 ROUGH VALVE



Built-in part for thermostatic mixer.



Technical features

Built-in part for thermostatic mixer.

Certifications

Available Finishes



031

Chrome

Technical Prescription

- working maximum pressure value 5 bar - in case of higher pressure, to use a pressure reducer
- Working pressure for an optimal installation: 3 bar
- Working water temperature not be higher than 70°C.
- In order to guarantee a long duration of the product and its total functionality install filter
- Test watertight and cleaning of the pipes before installing the tap.