

BC923

DOLPHIN VERTICAL LIQUID SOAP DISPENSER

FIXING INSTRUCTIONS

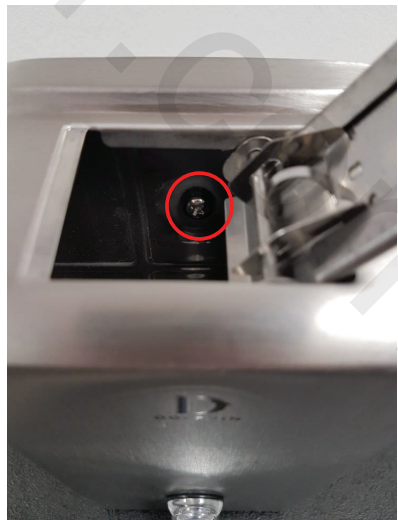
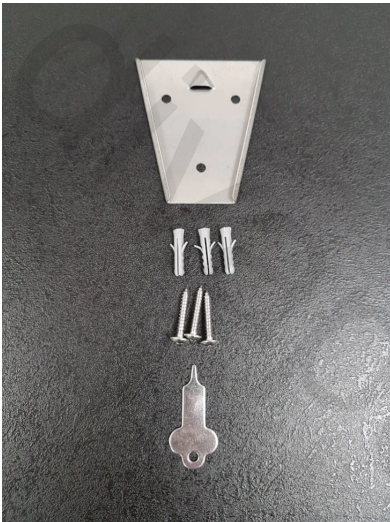


January 2023

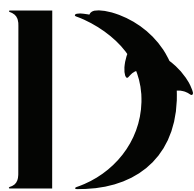
D
DOLPHIN

FIXING INSTRUCTIONS

1. Check contents; triangular wall bracket, 3 x fixing screws and plugs, lid key.
2. Fix wall bracket to a sturdy surface allowing space for dispenser to slide on.
3. Use key to release the lock and open lid
4. Undo security screw inside dispenser then slide dispenser onto bracket and turn screw clockwise until firm, do not overtighten
5. Fill with pH neutral liquid hand soap up to the max fill line – do not over fill above screw (circled in red on photo below)
6. Push lid shut.



www.divapor.com



D O L P H I N

Dolphin Solutions Ltd

Southpoint, Compass Park, Bodiam,
Robertsbridge, TN32 5BS

Tel: +44 (0)1424 20 22 24

Fax: +44 (0)1424 205 200

info@dolphinsolutions.co.uk

www.dolphinsolutions.co.uk