

26 024 661



Fits: TARA, VAIA, META

- shower with fixed riser projection 450 mm
- pivotable 180°
- overhead shower: rain flow
- rain shower Ø 300 mm
- rain shower with anti-scale system
- max. rainshower flow 14 l/min
- shower holder with rosette Ø 78mm
- slide-on rosettes Ø 55 mm
- 1500 mm metal shower hose
- height of fittings up to top edge of elbow 2280mm
- height of fittings up to rain shower (bottom edge) 1940mm
- automatic diverter for fixed-riser shower/hand shower
- Pipe diameter 20 mm
- quick clearing

• This product can help a building to meet requirements of Green Building Rating Systems, e.g. LEED®, BREEAM®, DGNB, WELL

This article does not include a hand shower!

Fits META, TARA, VAIA

Water carrying concealed rough parts on lower wall fixing.

Recommended spacing from bottom edge of shower stem to floor 92 mm.

Intrinsic protection against back flow.

This article does not include a hand shower!

Fits META, TARA, VAIA

Water carrying concealed rough parts on lower wall fixing.


Recommended spacing from bottom edge of shower stem to floor 92 mm.

Intrinsic protection against back flow.

	Brushed Platinum	26 024 661-06
	Chrome	26 024 661-00
	Platinum	26 024 661-08
	Dark Chrome	26 024 661-19
	Dark Chrome	26 024 661-19 0010
	Brushed Durabronze (23kt Gold)	26 024 661-28
	Matte Black	26 024 661-33
	Brushed Champagne (22kt Gold)	26 024 661-46
	Champagne (22kt Gold)	26 024 661-47
	Brushed Chrome	26 024 661-93
	Brushed Dark Platinum	26 024 661-99

26 024 661

Required miscellaneous

	Concealed wall mounting •min. recess depth 78 mm •max. recess depth 103 mm	35 003 970 90
---	---	---------------

Required miscellaneous

	Hand shower	28 015 979-06 0010
---	--------------------	-----------------------


Required miscellaneous

	Hand shower	28 017 979-06 0010
---	--------------------	-----------------------


Required miscellaneous

	Hand shower	28 017 979-06
--	--------------------	---------------

Required miscellaneous

	Hand shower	28 016 979-06
---	--------------------	---------------


Required miscellaneous

	Hand shower	28 018 979-06 0010
---	--------------------	-----------------------


Required miscellaneous

	Hand shower	28 015 979-06
---	--------------------	---------------

Required miscellaneous

	Hand shower •four settings: normal flow, soft flow, massage flow, cascade •spray head Ø 120mm •max. flow 15 l/min •Hand shower see page {PAGE}	28 012 979-06
---	--	---------------


Required miscellaneous

	Hand shower	28 016 979-06 0010
---	--------------------	-----------------------

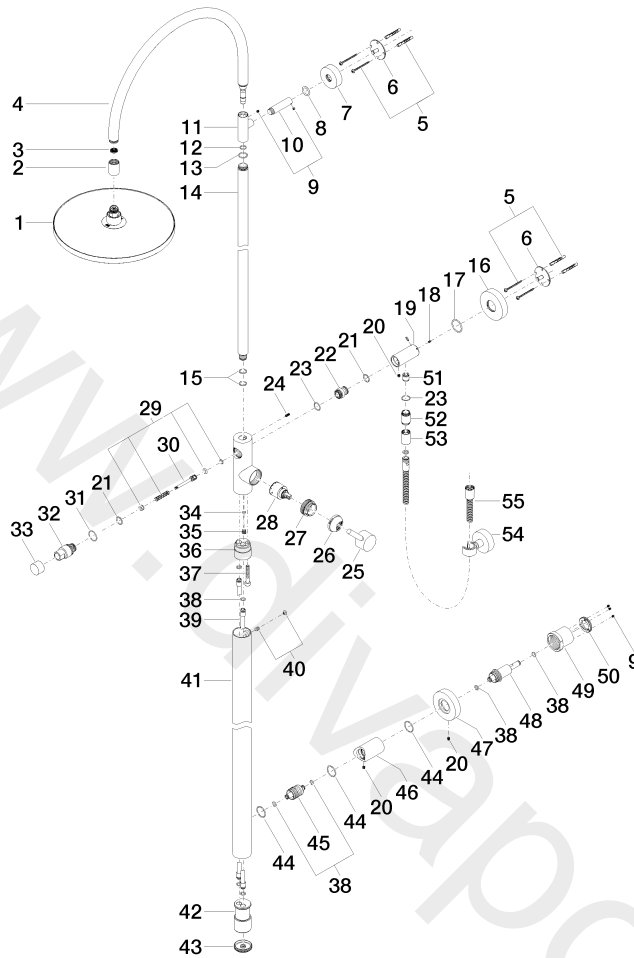
Required miscellaneous

	Hand shower	28 012 979-06 0010
--	--------------------	-----------------------

Required miscellaneous

	Hand shower	28 018 979-06
---	--------------------	---------------

26 024 661



Spare parts list

No.	Item Number	Name	Quantity used	Delivery time
1	04 12 05 091 00-06	shower	1	10
2	09 24 03 163 20-06	adaptor	1	10
3	09 23 01 039 90	sieve	1	2
4	90 28 22 082 00-06	spout	1	-
5	05 30 31 025 00 90	fixing set	2	2
6	09 30 11 103 90	holder	2	2
7	09 27 89 000-06	rosette	1	10
8	09 14 10 006 90	seal	1	2
9	09 31 11 030 90	pin	1	2
10	09 11 10 083-06	connection	1	10
11	09 17 11 049-06	holder	1	10
12	09 14 10 077 90	seal	1	2
13	09 14 10 122 90	seal	1	2
14	04 28 22 134 20-06	pipe	1	10
15	09 14 10 055 90	seal	2	2
16	09 27 88 010-06	rosette	1	10
17	09 14 10 101 90	seal	1	2
18	09 31 11 061 90	pin	2	2
19	09 11 10 081 20-06	connection	1	10
20	09 31 11 049 90	pin	3	2
21	09 14 10 010 90	seal	2	2

Shower system with single-lever shower mixer without hand shower

TARA

26 024 661

22	09 24 03 162 20 90	nipple	1	2
23	09 14 10 032 90	seal	2	2
24	09 31 11 024 90	pin	1	2
25	90 20 66 017 00-06	handle	1	10
26	09 28 30 042-06	cover	1	10
27	09 24 04 341 90	nut	1	60
28	90 15 05 064 00 90	cartridge	1	2
29	90 16 02 023 00 90	spring	1	2
30	09 31 09 102 20-06	pull-rod	1	-
31	09 14 10 112 90	seal	1	2
32	09 21 34 081 20-06	nipple	1	10
33	09 20 88 002-06	handle	1	10
34	09 14 10 132 90	seal	1	2
35	09 31 20 027 10-00	plug	1	10
36	09 24 03 149 10-06	adaptor	1	-
37	09 30 30 111 90	screw	1	2
38	09 14 10 139 90	seal	6	2
39	04 28 22 038 00 90	connection	2	2
40	04 31 20 034 00 90	plug	1	2
41	04 28 22 034 00-06	pipe	1	10
42	09 17 11 024 20 90	distributor	1	60
43	09 21 02 132-06	lid	1	10
44	09 14 10 063 90	seal	3	2
45	09 24 04 215 20 90	nipple	1	2
46	09 11 10 080 20-06	connection	1	10
47	09 27 88 008-06	rosette	1	10
48	09 24 04 210 10 90	nipple	1	2
49	09 21 02 128 90	sleeve	1	2
50	09 24 77 002 90	nut	1	2
51	09 23 01 141 90	back-flow preventer	1	2
52	09 24 03 115 20-06	nipple	1	10
53	09 21 02 069-06	cover	1	10
54	28 050 920-06	holder	1	-
55	90 30 02 072 00-06	Metal shower hose 1/2" x 3/8" x 1250 mm	1	10