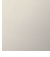







ST 060 109 4360

- cover plate Ø 124 mm
  - rosette Ø 55 mm
  - temperature control handle with safety limit stop at 38°C
  - thermostat cartridge
  - head part with cut-to-length spindle and sleeve
- Fits MADISON**



	Platinum	ST 060 109 4360-08
	Chrome	ST 060 109 4360-00
	Brushed Platinum	ST 060 109 4360-06
	Durabrace (23kt Gold)	ST 060 109 4360-09
	Brushed Durabrace (23kt Gold)	ST 060 109 4360-28
	Brushed Dark Platinum	ST 060 109 4360-99

Individual components of this set

You need the following components for this set

1x 36 501 977-08



1x 36 607 361-08



www.divapor.com

ST 060 109 4360



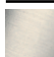





- cover plate Ø 124 mm
- temperature control handle with safety limit stop at 38°C
- thermostat cartridge

**Codes & standards**

**Fits MADISON**

Fits MADISON

	Platinum	36 501 977-08
	Chrome	36 501 977-00
	Brushed Platinum	36 501 977-06
	Durabrace (23kt Gold)	36 501 977-09
	Brushed Durabrace (23kt Gold)	36 501 977-28
	Brushed Dark Platinum	36 501 977-99

**Required miscellaneous**



**xTOOL Concealed thermostat module without volume control** 35 503 970 90  
 •min. recess depth 85 mm  
 •max. recess depth 110 mm

**Recommended miscellaneous**



**xGRID Attachment set for integrating in the dry wall construction** 12 340 970 90

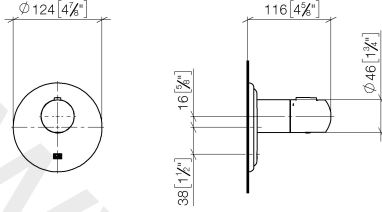
**Required miscellaneous**



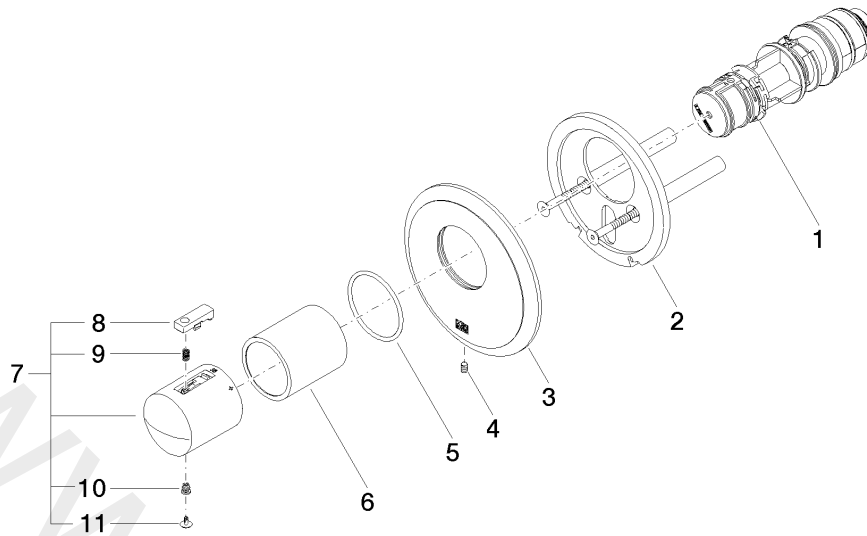
**xGRID Installation track 555 mm** 12 360 970 90

ST 060 109 4360

mm [inches]



www.divapor.com



Spare parts list

No.	Item Number	Name	Quantity used	Delivery time
1	90 15 02 063 00 90	cartridge	1	2
2	90 11 01 196 00 90	base	1	2
3	09 11 02 543-08	cover	1	60
4	09 31 11 048 90	pin	1	2
5	09 14 10 049 90	seal	1	2
6	09 21 02 112-08	sleeve	1	20
7	04 17 33 005 01-08	handle	1	20
8	90 21 33 010 00-13	handle	1	2
9	90 16 02 027 00 90	spring	1	2
10	09 30 30 136 90	screw	1	2
11	09 31 20 049-13	plug	1	30

ST 060 109 4360

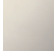
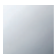






- rosette Ø 55 mm
- head part with cut-to-length spindle and sleeve
- 3x porcelain insert: HOT, COLD and NEUTRAL

**Codes & standards**

**Fits MADISON**

Fits MADISON

	Platinum	36 607 361-08
	Chrome	36 607 361-00
	Brushed Platinum	36 607 361-06
	Durabrace (23kt Gold)	36 607 361-09
	Brushed Durabrace (23kt Gold)	36 607 361-28
	Brushed Dark Platinum	36 607 361-99

**Required miscellaneous**

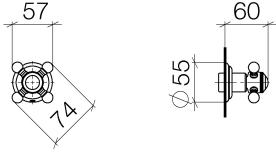


**Wall valve 1/2"**

35 607 970 90

- min. recess depth 75 mm
- max. recess depth 145 mm

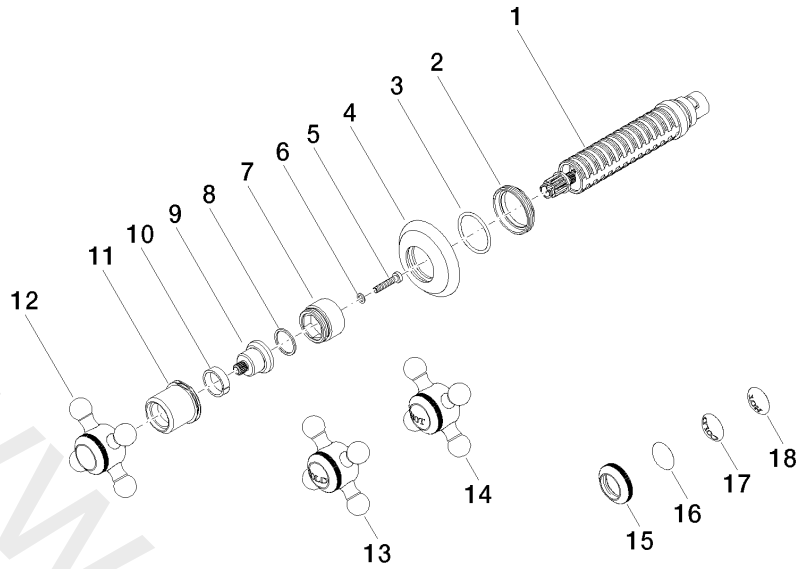
www.divapor.com



www.divapor.com



ST 060 109 4360



Spare parts list

No.	Item Number	Name	Quantity used	Delivery time
1	90 90 03 143 00 90	top	1	2
2	09 23 10 125-00	nut	1	10
3	09 14 10 063 90	seal	1	2
4	09 27 36 102-08	rosette	1	20
5	09 30 30 075 90	screw	1	2
6	09 30 11 194 90	disc	1	2
7	09 18 30 007-08	sleeve	1	60
8	09 28 10 030 90	ring	1	2
9	09 12 12 064-08	base	1	60
10	09 14 15 021 90	ring	1	2
11	09 21 02 161-08	cover	1	20
12	04 20 36 100 02-08	handle	1	20
13	04 20 36 100 00-08	handle ( cold )	1	20
14	04 20 36 100 01-08	handle ( hot )	1	20
15	09 20 36 005-08	handle	1	20
16	09 26 01 016 90	accessories	1	2
17	09 26 01 010 90	accessories	1	2
18	09 26 01 011 90	accessories	1	2