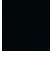

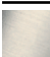



ST 060 112 3740



- cover plate Ø 124 mm
  - handle Ø 60mm
  - without rosette
  - temperature control handle with safety limit stop at 38°C
  - thermostat cartridge
  - 3x head part with cut-to-length spindle and sleeve
- Note: Important! The minimum recess depths make it necessary to have a wall of 2 x 6 crosspieces.  
Fits META**

	Matte Black	ST 060 112 3740-33
	Chrome	ST 060 112 3740-00
	Brushed Platinum	ST 060 112 3740-06
	Brushed Chrome	ST 060 112 3740-93

Individual components of this set

You need the following components for this set



1x 36 503 979-33



3x 36 607 740-33

www.divapor.com

ST 060 112 3740



- cover plate Ø 124 mm
- temperature control handle with safety limit stop at 38°C
- thermostat cartridge

**Codes & standards**

	Matte Black	36 503 979-33
	Chrome	36 503 979-00
	Brushed Platinum	36 503 979-06
	Platinum	36 503 979-08
	Durabrand (23kt Gold)	36 503 979-09
	Matte White	36 503 979-10
	Dark Chrome	36 503 979-19
	Brushed Durabrand (23kt Gold)	36 503 979-28
	Brushed Champagne (22kt Gold)	36 503 979-46
	Champagne (22kt Gold)	36 503 979-47
	Brushed Chrome	36 503 979-93
	Brushed Dark Platinum	36 503 979-99

**Required miscellaneous**



**xTOOL Concealed thermostat module without volume control** 35 503 970 90  
 •min. recess depth 85 mm  
 •max. recess depth 110 mm

**Recommended miscellaneous**



**xGRID Attachment set for integrating in the dry wall construction** 12 340 970 90

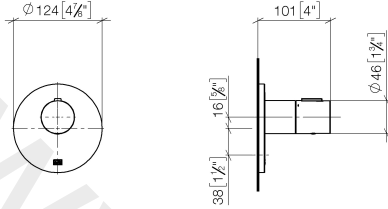
**Required miscellaneous**



**xGRID Installation track 555 mm** 12 360 970 90

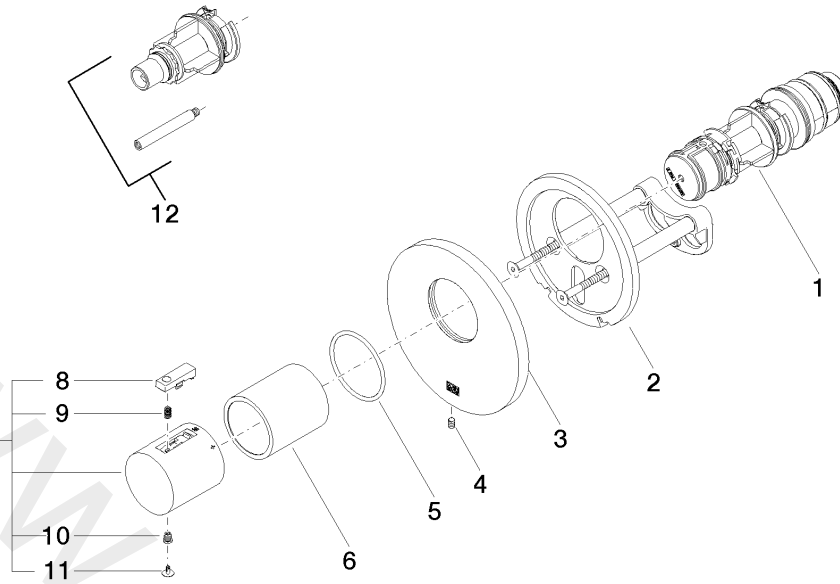
ST 060 112 3740

mm [inches]



www.divapor.com

ST 060 112 3740



Spare parts list

No.	Item Number	Name	Quantity used	Delivery time
1	90 15 02 065 00 90	cartridge	1	2
2	90 11 01 196 00 90	base	1	2
3	09 11 02 537-33	cover	1	30
4	09 31 11 048 90	pin	1	2
5	09 14 10 049 90	seal	1	2
6	09 21 02 112-33	sleeve	1	30
7	90 17 33 004 00-33	handle	1	30
8	90 21 33 010 00-13	handle	1	2
9	90 16 02 027 00 90	spring	1	2
10	09 30 30 136 90	screw	1	2
11	09 31 20 049-13	plug	1	30
12	12 178 970 90	Extension 46 mm	1	2

ST 060 112 3740



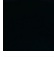
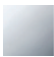





- without rosette
- handle Ø 60mm
- without marking
- head part with cut-to-length spindle and sleeve

**Codes & standards**

**Fits CL.1, META, CYO**

Fits CL.1, META, CYO

Fits: CL.1, META, CYO

	Matte Black	36 607 740-33
	Chrome	36 607 740-00
	Brushed Platinum	36 607 740-06
	Dark Chrome	36 607 740-19
	Brushed Durabronze (23kt Gold)	36 607 740-28
	Brushed Chrome	36 607 740-93
	Brushed Dark Platinum	36 607 740-99

**Required miscellaneous**



**Wall valve 1/2"**

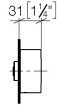
35 607 970 90

- min. recess depth 85 mm
- max. recess depth 145 mm

www.divapor.com

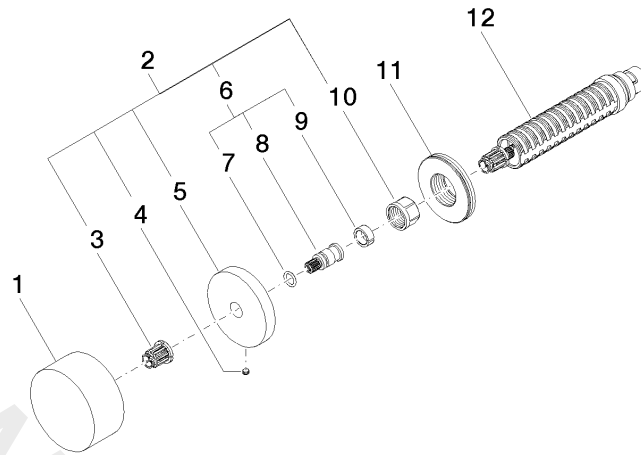
ST 060 112 3740

mm [inches]



www.divapor.com





Spare parts list

No.	Item Number	Name	Quantity used	Delivery time
1	09 20 74 004-33	handle	1	30
2	04 27 74 004 00-33	rosette	1	30
3	90 12 12 002 00 90	fixing cap	1	2
4	09 31 11 055 90	pin	1	2
5	09 27 74 004-33	rosette	1	30
6	04 29 06 020 00-00	spindle	1	10
7	09 14 10 060 90	seal	1	2
8	09 29 06 020-33	spindle	1	-
9	09 14 15 020 90	ring	1	2
10	09 23 30 023 90	nut	1	2
11	09 30 01 107 90	sleeve	1	2
12	90 90 03 143 00 90	top	1	2