

36 607 361



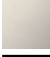



- rosette Ø 55 mm
- head part with cut-to-length spindle and sleeve
- 3x porcelain insert: HOT, COLD and NEUTRAL



**Codes & standards**

**Fits MADISON**

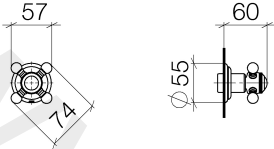
Fits MADISON

|   |                               |               |
|---|-------------------------------|---------------|
|  | Brushed Platinum              | 36 607 361-06 |
|  | Chrome                        | 36 607 361-00 |
|  | Platinum                      | 36 607 361-08 |
|  | Durabrace (23kt Gold)         | 36 607 361-09 |
|  | Brushed Durabrace (23kt Gold) | 36 607 361-28 |
|  | Brushed Dark Platinum         | 36 607 361-99 |

Required miscellaneous

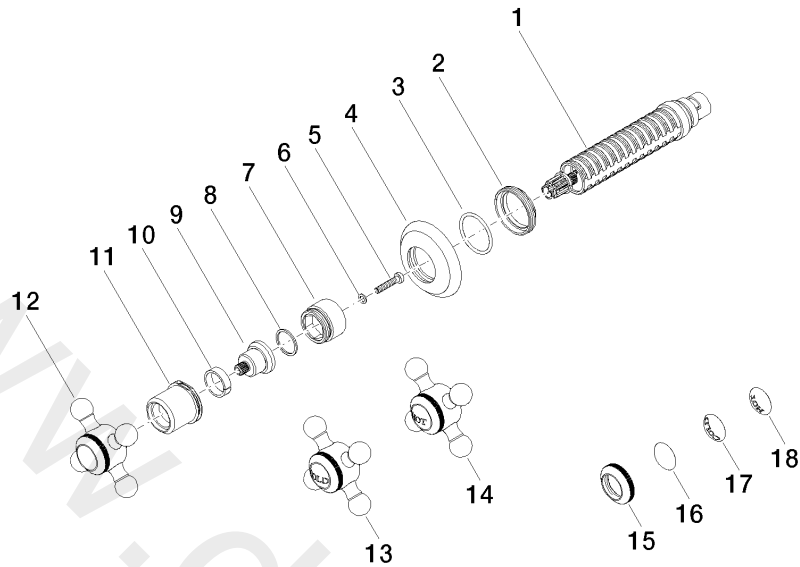


- Wall valve 1/2"** 35 607 970 90
- min. recess depth 75 mm
  - max. recess depth 145 mm



www.divapor.com

36 607 361



Spare parts list

| No. | Item Number        | Name            | Quantity used | Delivery time |
|-----|--------------------|-----------------|---------------|---------------|
| 1   | 90 90 03 143 00 90 | top             | 1             | 2             |
| 2   | 09 23 10 125-00    | nut             | 1             | 10            |
| 3   | 09 14 10 063 90    | seal            | 1             | 2             |
| 4   | 09 27 36 102-06    | rosette         | 1             | 10            |
| 5   | 09 30 30 075 90    | screw           | 1             | 2             |
| 6   | 09 30 11 194 90    | disc            | 1             | 2             |
| 7   | 09 18 30 007-06    | sleeve          | 1             | -             |
| 8   | 09 28 10 030 90    | ring            | 1             | 2             |
| 9   | 09 12 12 064-06    | base            | 1             | -             |
| 10  | 09 14 15 021 90    | ring            | 1             | 2             |
| 11  | 09 21 02 161-06    | cover           | 1             | 10            |
| 12  | 04 20 36 100 02-06 | handle          | 1             | 10            |
| 13  | 04 20 36 100 00-06 | handle ( cold ) | 1             | 10            |
| 14  | 04 20 36 100 01-06 | handle ( hot )  | 1             | 10            |
| 15  | 09 20 36 005-06    | handle          | 1             | 10            |
| 16  | 09 26 01 016 90    | accessories     | 1             | 2             |
| 17  | 09 26 01 010 90    | accessories     | 1             | 2             |
| 18  | 09 26 01 011 90    | accessories     | 1             | 2             |