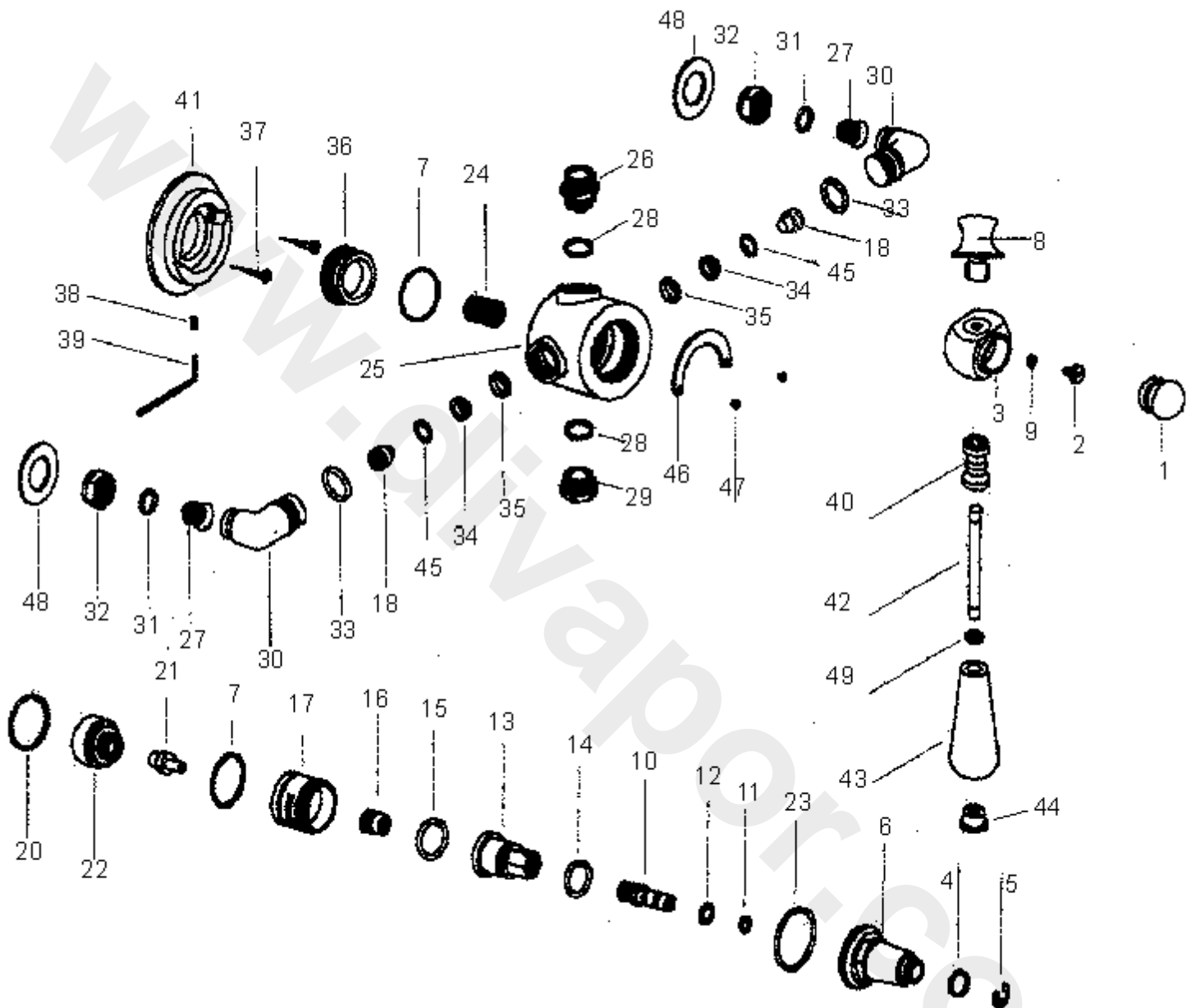


<p>



<b>Ref.</b>	<b>Description</b>	<b>Part No.</b>
1	shower head	E910389--
1*	INDICE 780235	L687901
2*	SPINDLE SCREW 860519K	L0230VO
3	LEVER HEAD 240141	-
4	"O"RING 9138-E8	-
5*	CIRCLIP 9355-16	L686567
6	HEAD 680301	-
7	"O" RING (2) 480028	-
8*	LEVER HEAD SCREW 780100	L687867
9*	"O" RING 480008	L687067
10*	SPINDLE 520099	L690067
11	"O" RING 9081-C17	-
12	P.T.F.E. WASHER 460188	-
13*	SPINDLE HOUSING 560529	E960308NU
14	"O" RING 480210	-
15	"O" RING 480212	-
16	ADJUSTING SCREW 480212	S960024NU
17*	HALF CARTRIDGE 320003	S961098NU
18	CHECK VALVE 320003	-
19	ORIFICE DISC (2) 320003	-
20	"O" RING 480190	-
21*	THERMOSTAT 480190	L687667
22*	DISTRIBUTOR AND PISTON ASSEMBLY480190	L686867
23	"O" RING 480241	-
24	SPRING 360121	-
25	BODY 150150D	-
26	OUTLET ADAPTOR 9214-4	-
27*	15mm FILTER 780621	L687567
28	"O" RING (2) 480017	-
29	OUTLET PLUG 780190	-
-	ELBOW(2) 150060 (old was E960513AA)	-
30	Elbow *** New version ***	S961126AA
31	OLIVE (3) 9500-C2	-
32	COMPRESSION NUT (3) 9500-C1	L6918AA
33	"O" RING 480017	-
34*	FLOW LIMITER 780090	LL689767
35	RETAINING RING 780033	-
36	BOTTOM CAP 560514	-
37	WOODSCREW 560604	-
38	GRUBSCREW 560586	-
39	ALLEN KEY 760072	-
40	LEVER SPACER 760089	-
41G	EXPOSED BACKPLATE 220016 GOLD	L6884AZ
41C	EXPOSED BACKPLATE CHROME	L6883AA
42	LEVER ROD 760091SS	-
43*	CERAMIC LEVER L688001	L688001
43A	Lever handle complete ----- NEW ITEM	E960520--
44*	LEVER CAP 780101 SILVER	L6888AA
44a*	LEVER CAP 780101 GOLD	L6889AZ
45	WASHER 300315	-
46	INDICATOR PLATE 780083	-
47	PAN HEAD SCREW (2) 560315	-
48	WALL ELBOW COVER PLATE 220039	L6896AA
49	FELT WASHER 5434-25	L688667
50	5" SHOWER ROSE	L6907--

**NB -- colour/finish options**

Chrome = AA

Gold =AZ